

CONNECT

JANUARY - MARCH 2022

Dear Team,

Let me begin by congratulating each one of you on the remarkable milestone achievement of Rs 1000 Cr in sales for the financial year of 2021 – 2022. I hope, beginning a new year on such a high note will only fuel your motivation to reach for the skies in the coming term.

Looking back at our journey so far, we have been able to restart our operations with full vigor in the latter half of the year, thanks to COVID restrictions being lifted. This has resulted to various successful launches of much awaited projects – both for the customers as well as for us. The success of reaching a milestone so significant in this situation has catapulted Assetz amongst industry giants who have been in the business for over 30 years. And, just as Bangalore has started taking note of our commitment to luxury properties and innovative designs – we now stand at the forefront alongside our competitors.

As we move towards the future with a remarkable success in our books, in the year 2022 we aim to become one of the major players to dominate the market – prepared to sail through any fluctuation.

Some of the highlights of the last financial year has been:

1. Launched Marq (Phase 3)
2. Launched 63° East (Tower A & F)
3. Handover of 63° East (Tower C) completed
4. Handover of 38 & Banyan has begun
5. Handover of Earth & Essence (Phase 1A) has begun
6. Project launches scheduled for the next financial year: Soho & Sky, 22 & Crest, Earth & Essence (Phase 1B), Soul & Soil villaments, Sun & Sanctum (Phase 2), Canvas & Cove (Phase 2), and Marq (Phase 3B)

In the last year, we studied the real estate market across the country to reconfigure the heart of our projects and introduce Bangalore's luxe-living residents to homes they will love. Everyone has been left mystified by the current world situation. Residential initiatives that relieve stress with sustainable ecosystems are in high demand. People are recognizing the importance of reclaiming their lives and reconnecting with their inner selves by adopting a healthy lifestyle. Even first-time home buyers are now knowledgeable of what sustainable luxury really means for them over the last two years. With the market's age dynamic shifting towards more millennials becoming first-time homeowners – adapting the relevant technology for viewing properties and having price transparency for purchasing has become crucial.

Let us maintain our outstanding success in the upcoming fiscal year, with strong support from all business units. Only when we work together is when results worth a grand celebration is guaranteed.

Here is to Assetz continuing delivery on Carbon Healing Homes that we are proud to create, and customers are proud to own. Here is to the force that takes Assetz to the next level – you.

AKSHAY DEWANI

PROJECT UPDATES

38 & Banyan

- The external landscape and driveway work has been completed.
- The clubhouse area finishes is near completion.
- The terrace swimming pool and amphitheatre area work has been completed.

UNIT FINISHES

- The internal unit finishes is near completion.
- The customer handover for interior work is in progress.

COMMON AREA FINISHES

- The transformer yard work has been completed.
- The basement car park marking work is in progress.





PROJECT UPDATES

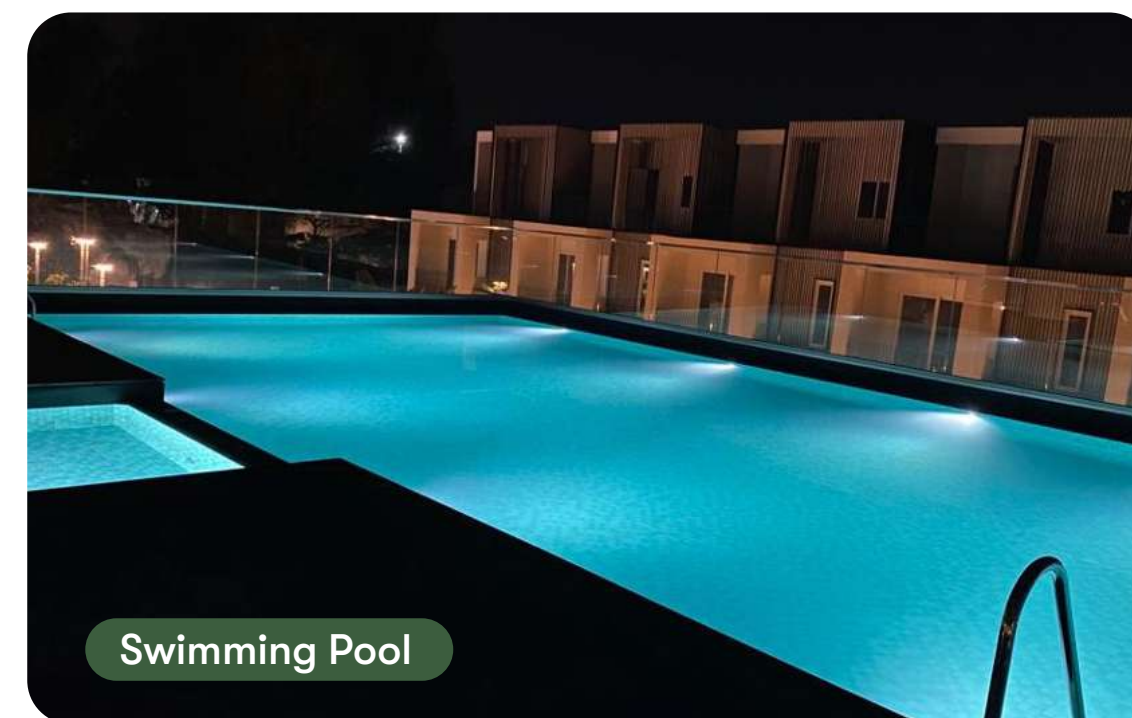
Soul & Soil

PHASE 1A

- The customer occupancy has started.
- All utilities are functional.

PHASE 1B

- The internal finishing works are in progress.
- Block E1-5 – The 1st coat of elevation painting work has been completed. The tile PDI work is in progress. The CP & sanitary installation work is in progress.
- Block H – The 1st coat of elevation painting work has been completed. The tile PDI work is in progress.
- Block F – The UPVC, wiring and 1st coat painting work has been completed. The door fixing work is in progress.
- Block E6-10 – The tiling, UPVC, wiring and 1st coat painting work has been completed. The door fixing work is in progress.
- Block G – The waterproofing, tiling and wiring work has been completed. The UPVC work is in progress.



Swimming Pool



GYM

PROJECT UPDATES

Soul & Soil

PHASE 2A

- Block N – The super structure work has been completed. The water proofing and tiling work is in progress.
- Block J(1-7) - The super structure work has been completed. The water proofing and tiling work is in progress.
- Block K1-5, K6-10 – The super structure work has been completed. The water proofing work is in progress.
- Block J(8-15) – The substructure work has been completed. The super structure work is in progress.
- Block J(8-15) – The substructure work has been completed. The super structure work is in progress.
- Block M – The substructure work has been completed. The super structure work is in progress.
- Block L – The substructure work is in progress.

EWS

- The structure has been completed in EWS. The masonry work has been completed. The plastering work is in progress.



Clubhouse - Indoor Badminton Court



Clubhouse - Yoga Room



Wash Area

PROJECT UPDATES

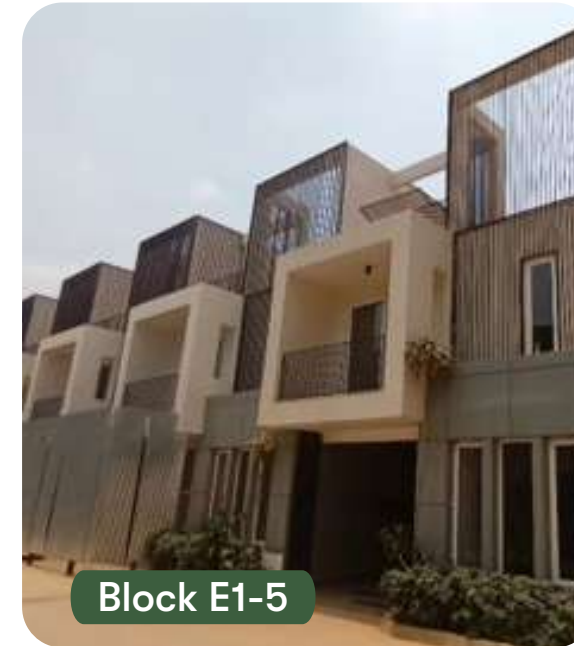
Soul & Soil

EXTERNAL

- Phase 1 A – The hardscape & landscape work has been completed. The light fixture installation work has been completed. The community kitchen work is in progress.
- Clubhouse – The lift, indoor game area, badminton court, yoga room, steam room, swimming pool and gym room work has been completed.
- Phase 1 B – The road between Block E6-10, Block F and in front of Block H is ready to receive GSBC. The balance area MEP work is in progress.
- The hardscape area, play area, half basketball court and volleyball court grading work has been completed. The services work is in progress.

VILLAMENT

- The excavation and footing work is in progress.



Block E1-5



Block H



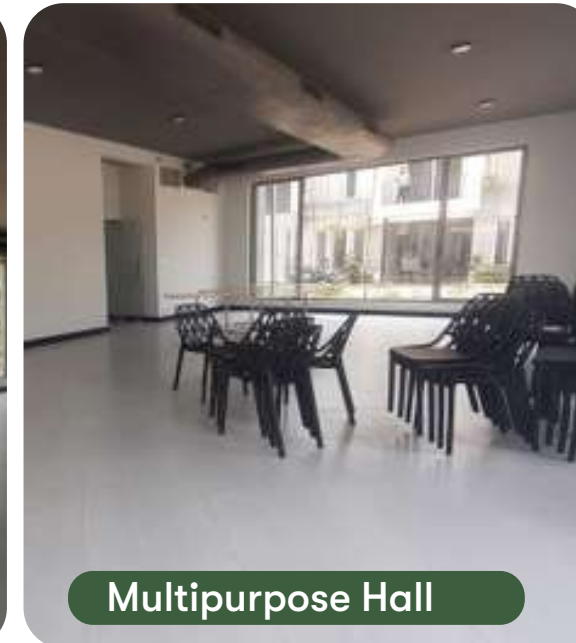
Block F



Block E6-10



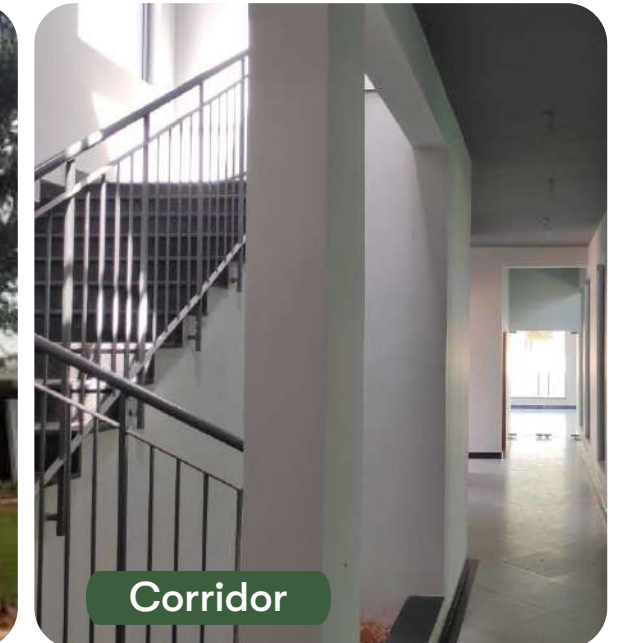
Game Room



Multipurpose Hall



Phase 1A - Landscape



Corridor



EWS



Phase 2A Overall



Phase 2B - Villaments

PROJECT UPDATES

Here & Now

TOWER 1

- All 165 units are ready for customer inspection.
- The customer inspection for 125 units has been completed.
- The key handover to customer for 74 units has been completed.

TOWER 2

- All units are ready for customer inspection and inspection for 142 units has been completed.
- The key handover to customer for 76 units has been completed.

CLUBHOUSE

- The elevation glazing and clay tiling work has been completed.
- The indoor play equipment installation work has been completed.

COMMON AREA

- The double height entrance lobby work for Tower 1 & Tower 2 has been completed.
- The landscape work is in progress.
- The column guard, car park marking and speed breaker fixing work in the basement has been completed.
- All utilities are in function.

EXTERNAL DEVELOPMENT

- The south side of the external sports area finishing work is in progress.
- The open amphitheater work is in progress.
- The play equipment installation work is in progress.



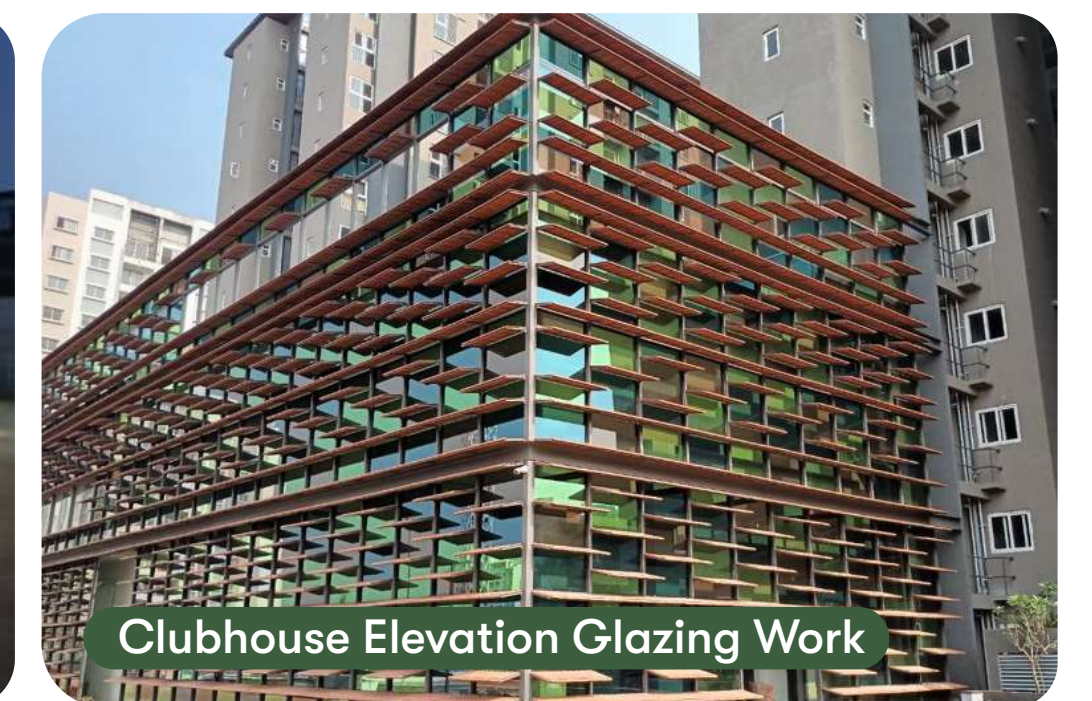
Tower 1 & 2 - Overview



Central Podium



Central Podium



Clubhouse Elevation Glazing Work



Clubhouse Elevation Glazing Work



Swimming Pool



Swimming Pool



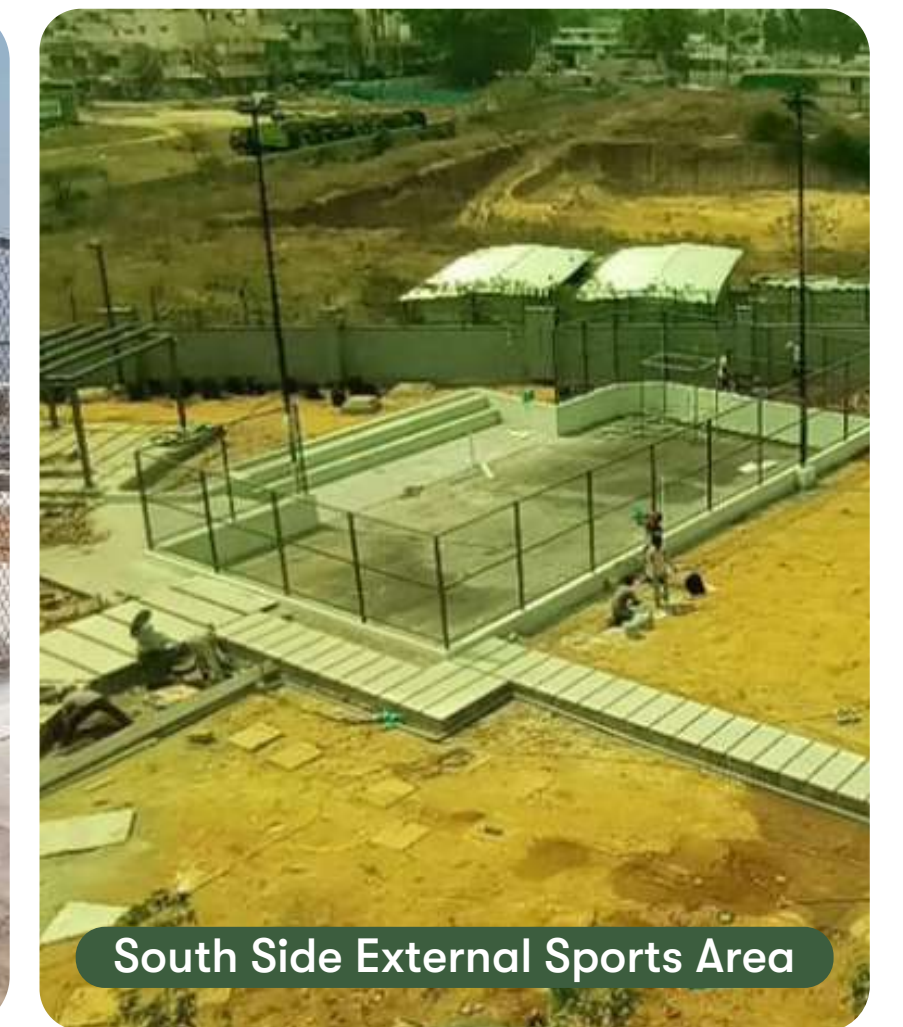
Trellis & Outdoor Gym Station



GYM



Outdoor Badminton Court



South Side External Sports Area

PROJECT UPDATES

Sun & Sanctum

WING 1

- The 3rd and 4th floor column work is in progress.

WING 2

- The 4th floor slab and 1st floor block work is in progress.

WING 3

- The 4th floor slab work is in progress.
- The 1st floor block work is in progress.

WING 4 & 5

- The 1st floor slab work is in progress.
- The 1st floor slab work for non-tower area is in progress.



PROJECT UPDATES

22 & Crest

MOCKUP

- All work has been completed and the facility is functional.

MAIN PROJECT WORK

- Principal contractor mobilization work is in progress.



Entry Pathway



Living Area





Bedroom 1



Bedroom 2



Bedroom 3



Discussion Rooms



Seating Area



PROJECT UPDATES

18 & Oak

- The main road work is nearing completion.
- The electrical work is nearing completion.
- The PHE work is nearing completion.
- The car park work is in progress.
- The water line work is in progress.
- The crossroad work is in progress.
- The pathway work is in progress.



Infra Road Works - Phase 3



Infra Road Works - Phase 4



Infra Road Works - Phase 2



Infra MEP Work



Hume Pipe Erection



PROJECT UPDATES

Atmos & Aura

PHASE 1 - PLOTTED DEVELOPMENT

- The water supply pipeline work has been completed.
- The road work with Dense Bitumen Macadam has been completed.
- The storm water drain work has been completed.

PHASE 2 - PLOTTED DEVELOPMENT

- The storm water drain work has been completed.
- The road work with Dense Bitumen Macadam has been completed.

PHASE 3 - PLOTTED DEVELOPMENT

- The water supply pipeline work has been completed.
- The underground provision for electrical supply work has been completed.
- The sewage pipeline work has been completed.
- The storm water drain work has been completed.
- The second RBI layer for the road work has been completed.

US SUMP & STP

- The STP structure work has been completed.
- The UG Sump structure work has been completed.



Phase 1 – DBM work has been completed



Phase 2 – DBM work has been completed



Phase 3 – CDP Road work is in progress



STP structure work has been completed

PROJECT UPDATES

Marq 2.0

PHASE 2

BUILDING 2

- The MS railing work has been completed.
- The internal & shaft PHE work has been completed.
- The sunken waterproofing work has been completed.
- The tiling finished work has been completed till the 20th floor.
- The UPVC work has been completed till the 20th floor.

BUILDING 3 STRUCTURE

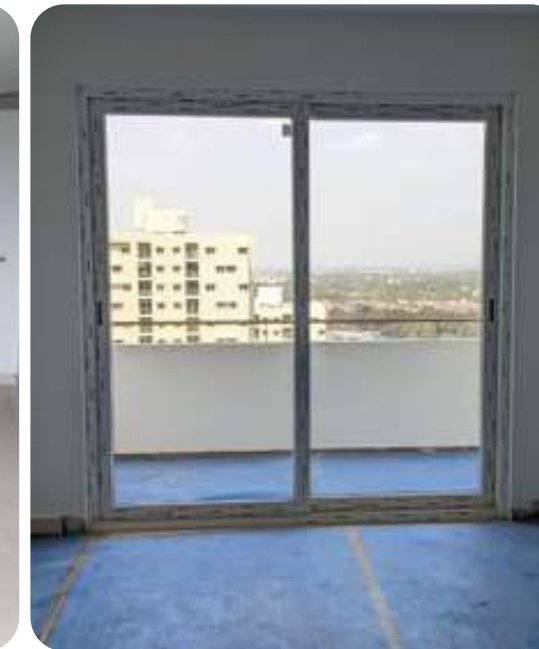
- The L wing structure has been completed till the 13th floor.
- The M wing structure has been completed till the 11th floor.



South View



North View



Building 3 - North-East View



Building 3 - North-West View

PROJECT UPDATES

Marq 3.0

PHASE 3A

BUILDING 4

- The Bhoomi Pooja for Phase 3A project was done on 19th Jan 2022.
- The Phase 3A mass excavation work has been completed.



PROJECT UPDATES

63° East

TOWER D

- The common area finishing work has been completed.
- The customer occupancy for more than 160 units has been completed.

TOWER B

- The typical floor concrete work is in progress in B1 – 13th floor, B2 – 13th floor and B3 – 14th floor.
- The painting, tiling, balcony railing, and window fixing finishing work is in progress.

CLUBHOUSE

- The facility team hand over for all internal amenities has been completed.
- The swimming pool final finishing work is in progress.



Tower D – Northeast Elevation



Tower D – East Elevation



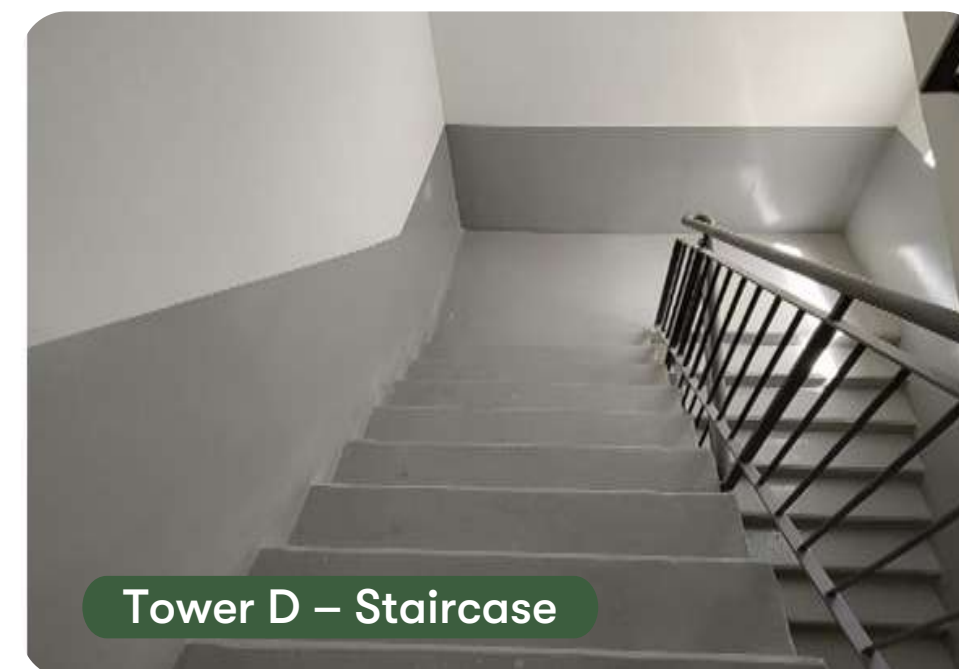
Tower D – Lift Lobby



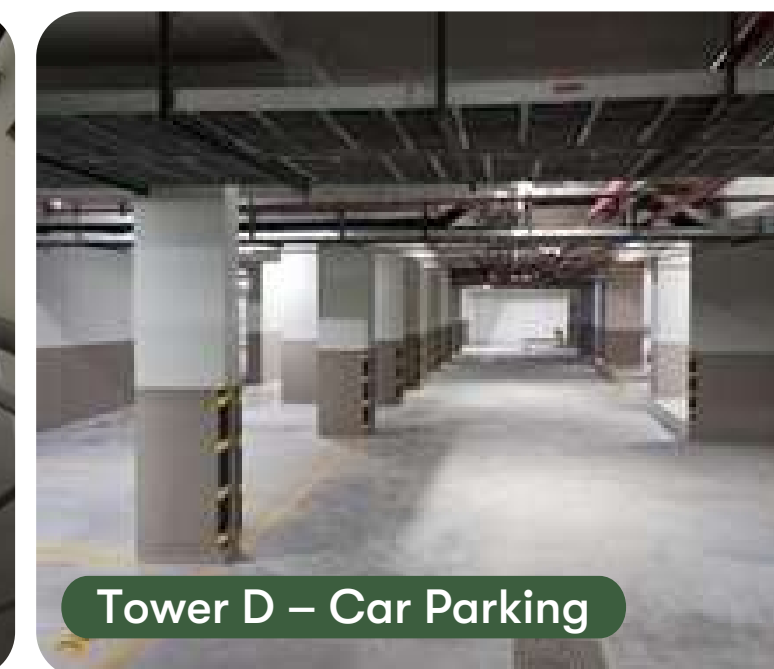
Tower D – Lobby



Tower D – Podium Landscape



Tower D – Staircase



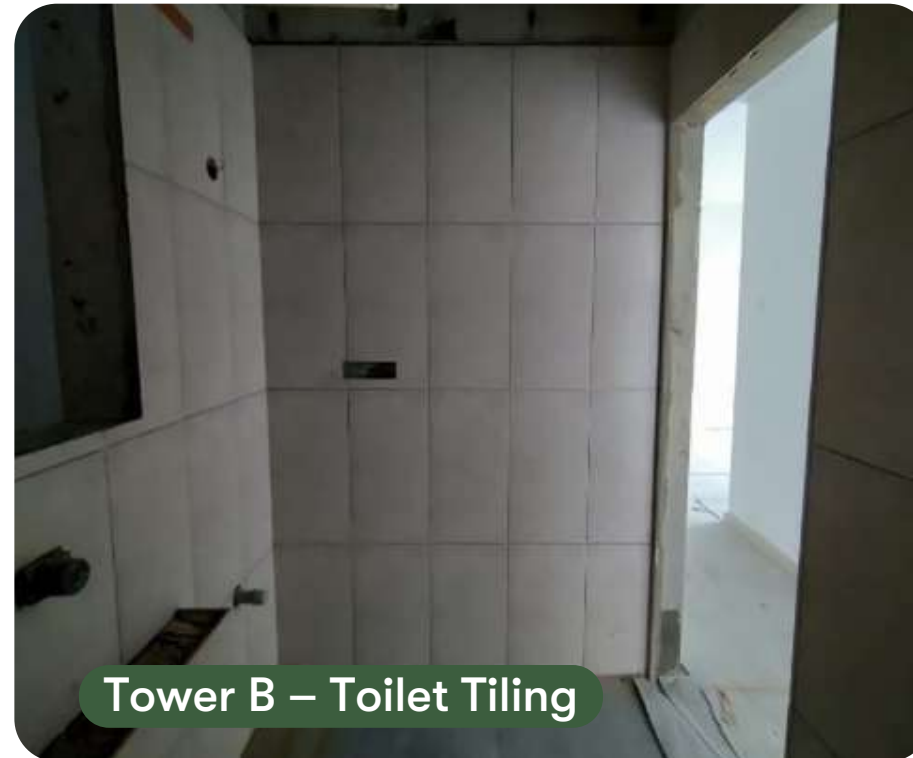
Tower D – Car Parking



Tower D – Car Parking



Tower B - B1, B2 & B3 Block South Elevation



Tower B - Toilet Tiling



Tower B - Toilet Tiling



Tower D - UPVC Window Fixing



Tower B - Balcony Railing



Clubhouse Swimming Pool



Clubhouse Staircase



Excavation Work



Foundation Work



Foundation Work

PROJECT UPDATES

Earth & Essence

PHASE 1A

BUILDING 6 (5 BHK - 9 ROW HOUSES)

- The handover for 6 units to the facility team has been completed.

BUILDING 7A (4 BHK - 5 ROW HOUSES)

- The customer handover for 2 units has been completed.

BUILDING 7B (4 BHK - 7 ROW HOUSES)

- The CP and sanitary work for all units has been completed.
- PDI Status – The 2nd inspection for all units has been completed.



PROJECT UPDATES

Earth & Essence

BUILDING 3 (3 BHK – 12 ROW HOUSES)

- The putty work in 12 units has been completed.
- The tiling work in 10 units has been completed.
- The 1st coat painting work in 9 units has been completed.
- The customer handover for 1 unit has been completed.

BUILDING 5 (3 BHK – 12 ROW HOUSES)

- The grade slab casting work for all units has been completed.
- The 1st slab casting for 3 units has been completed.

CLUBHOUSE

- The swimming pool tiling work has been completed.
- The tennis court and half-basketball court work is in progress.
- The pathway work is in progress.
- The softscape work is in progress.

CENTRAL SPINE

- The softscape work is in progress.





Clubhouse



Swimming Pool Waterproofing



Entry Pathway & Half Basketball Court



Tennis Court



Nallah Stone Pitching



Badminton Court



Gym

PROJECT UPDATES

Earth & Essence

PHASE 3 **PLOTTED DEVELOPMENT**

- The Dense Bitumen Macadam laying work for all roads has been completed.
- The streetlight fixing work for all roads has been completed.
- The paver fixing work for all roads has been completed.
- The boundary stone laying work has been completed.
- The softscape work has been completed.
- The signage work is in progress.

PHASE 4 **PLOTTED DEVELOPMENT**

- The road formation level excavation work has been completed.
- The underground MEP provision laying work has been completed.

BUILDING 1 (4BHK - 5 Row Houses)

- The footing work has been completed.
- The backfilling work is in progress.

BUILDING 2 (4BHK - 9 Row Houses)

- The plinth beam casting work has been completed.
- The grade slab casting work is in progress.





Phase 4



Building 1



Building 2



Phase 2



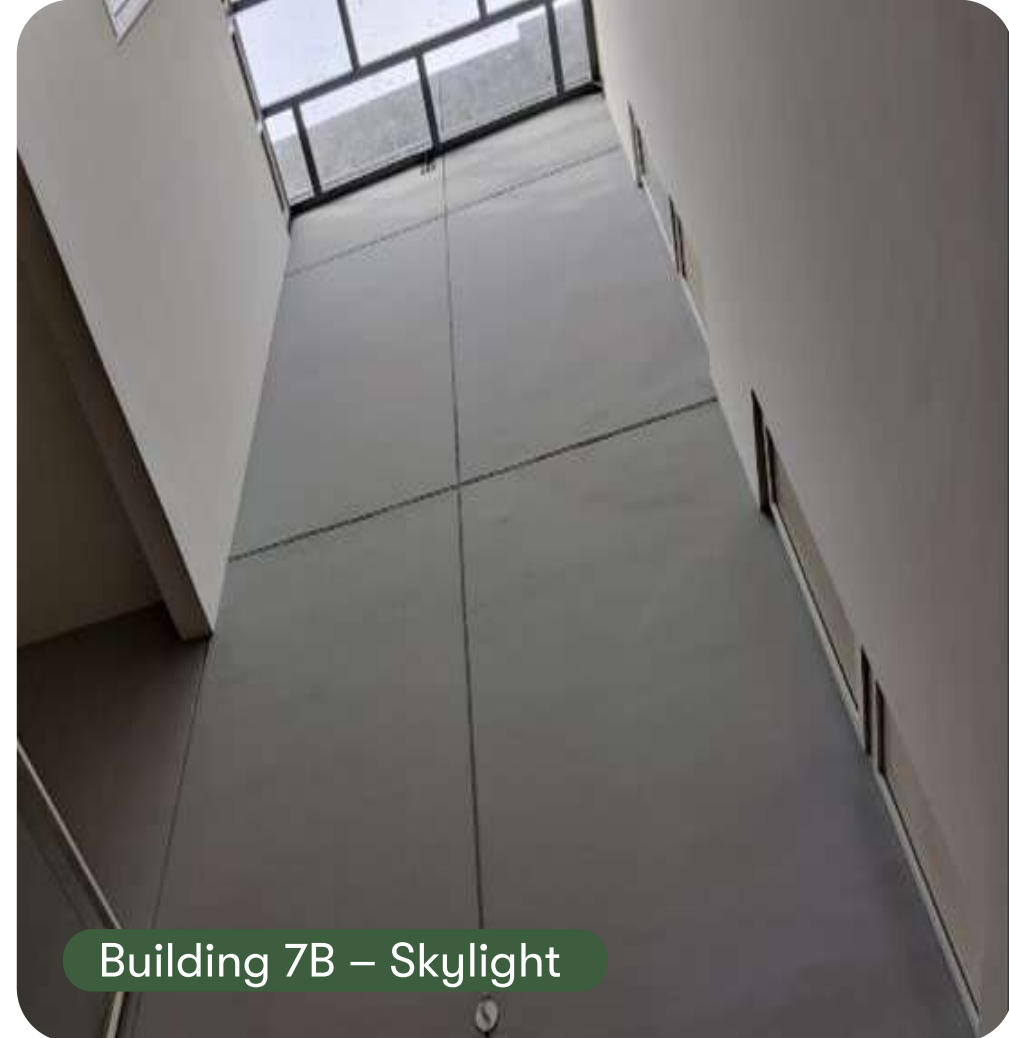
The internal road in front of Building 6



The internal road in front of Building 7



Building 7B - Courtyard



Building 7B - Skylight



Building 7B - Wooden Flooring



Building 7B - Toilet 2

PROJECT UPDATES

Leaves & Lives

PHASE 1

BUILDING 1

- The ground floor shell and core work for all 10 units has been completed.
- The 1st floor slab work for 9 units has been completed.
- The 2nd floor slab work for 7 units has been completed.
- The terrace floor slab work for 2 units has been completed.

BUILDING 2

- The shell and core work for 2 units on the ground and 1st floor has been completed.

BUILDING 3

- The shell and core work for 10 units has been completed.

BUILDING 4

- The shell and core work for 10 units has been completed.

BUILDING 5

- The floor slab work for 7 units on the ground floor has been completed.
- The floor slab work for 7 units on the 1st floor has been completed.
- The floor slab work for 2 units on the 2nd floor has been completed.

BUILDING 6

- The shell and core work for 10 units has been completed.
- The deck landscaping, waterproofing, plumbing, and tiling work is in progress.
- The 1st coat of internal painting work for 5 units has been completed.

PHASE 2

- Building 8 & 9 – The excavation and PCC work is in progress.



Leaves & Lives – Ariel View



Building 3



Building 4



Building 5



Building 6



External development and painting work



Internal 1st Coat Painting



Phase-2 Excavation and Marking



Phase -2 PCC Work

PROJECT UPDATES

Canvas & Cove

PHASE 1

TOWER A & B

- The mass excavation work has been completed.
- The retaining wall work is in progress.

TOWER C

- The footings work has been completed and casting work for columns from B2 to B1 is in progress.
- The backfilling and compaction work is in progress.

TOWER D

- The basement 1 slab work has been completed.
- The ground floor 1st slab pour work has been completed.
- The ground floor 2nd slab pour work is in progress.
- The 1st floor units RC wall aluminum form work is in progress.

STP

- The excavation work is nearing completion.



Tower D



Tower C



Tower C

Environmental Social Governance

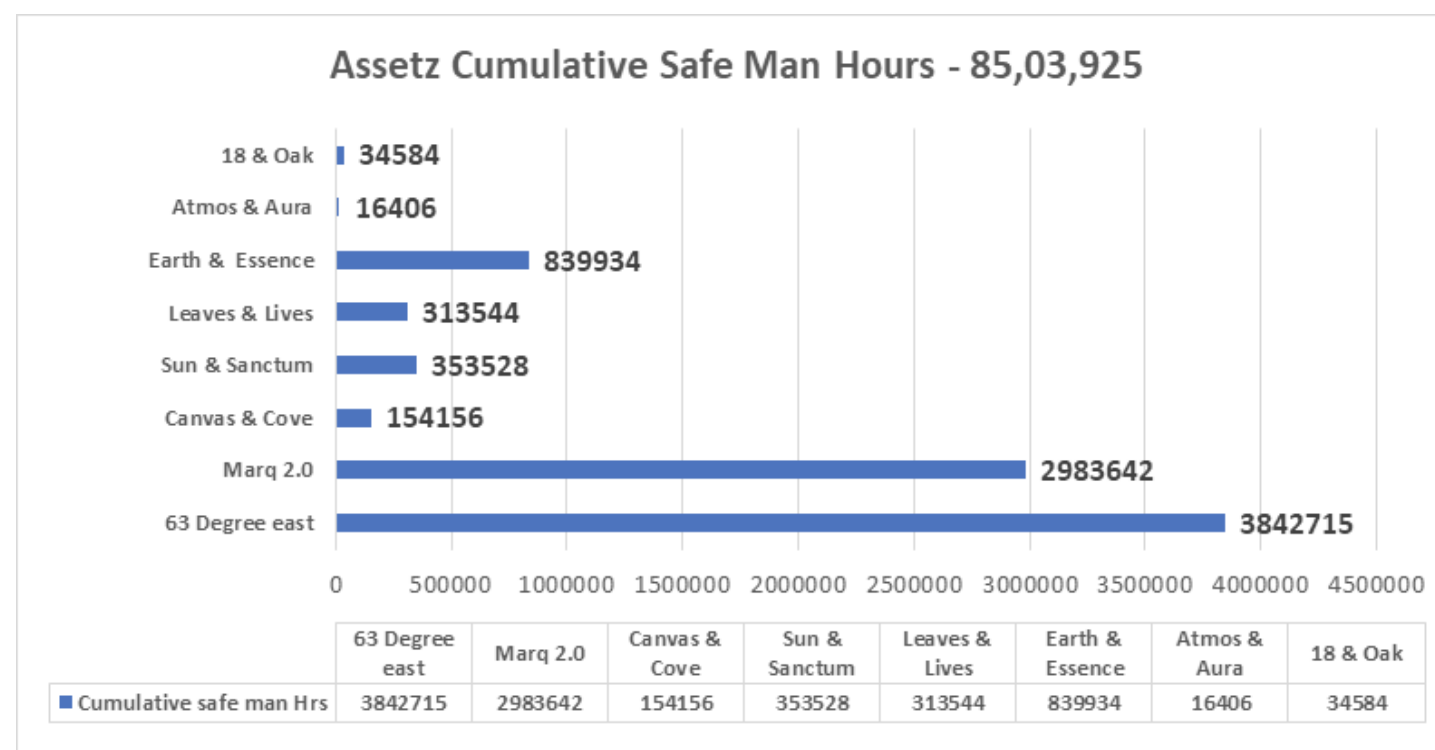
Jan'22-Mar'22

ENVIRONMENTAL HEALTH & SAFETY

While improving construction safety may be necessary to comply with safety and health laws, there are numerous other advantages to doing so, including a reduction in the number of safety hazards and incidents. This is critical since safety risks and events can tarnish the company's reputation among industry professionals and regulatory bodies, as well as create a financial setback.

Another advantage of prioritizing construction safety first is that it helps to build trust between workers, safety managers, and engineers. This higher trust leads to improved communication throughout the organisation, resulting in fewer misunderstandings and conflicts. It can also promote worker efficiency and productivity. When personnel are given proper training and protection, they are better equipped to carry out their tasks successfully and safely. Commitment to safety initiatives, trainings, and health and environmental standards is an essential aspect of construction safety.

During the period of Jan '22 – Mar '22, we at Assetz initiated various EHS activities across all projects and this is how many hours we put in to make safe project sites even safer:



Marq-2

Monthly Safety committee meeting conducted to address the areas of improvement at the site and to interact with the workforce representative to fulfill the requirements



Monday TBT



4 Layers of Edge Protection

63 Degree East



Safety Committee Meeting



RCCB and Earth Pit checking

Canvas & Cove



Mass TBT



Induction of New Labour



Power tools kit issued to workers



Weekly Toolbox Talk



RO drinking water provision at project

Sun & Sanctum



Edge & Fall Protection System



Workforce Training



Leaves & Lives



Health Camp & COVID vaccination for new workforce



Provision for Safe Access



Edge & Fall Protection System



Workforce Training

Earth & Essence



Weekly Toolbox Talk



Edge & Fall Protection System



Workforce Training

Atmos & Aura



Safety instructions UG Sump deep excavation



Workforce Training

18 & OAK



Workforce Training



51st National Safety Day

National Safety Day/Week 2022 @ Assetz

The theme for National Safety Day 2022 is “Nurture young minds - Develop safety culture” which focuses on the importance of teaching safety practices and principles to children. Safety habits developed at a young age can help individuals throughout their lives.

While the implementation of safety remains a daily initiative across all Assetz project sites – every year we celebrate National Safety Day on the 4th of March in order to bring safety awareness among the common people and prevent accidents.

The 51st National Safety Week was observed this year at all construction sites from March 4 to March 10. During this week, people are made aware of the ways to avoid industrial accidents through various awareness programs. The only purpose of every activity carried out in this whole week is to make people aware of their safety and to make them aware of different ways of protection.

Marq 2.0



63 Degree East



63 Degree East and Leaves & Lives



51st National Safety Day Closing Ceremony



Fun Games Conducted for the Workers



63 Degree East and Leaves & Lives



Briefing About Importance of Safety



Refreshments Distributed to the Workforce

Canvas & Cove



51st National Safety Day Closing Ceremony



Best Safety Performance Award to the Workers



Best Safety Performance Award to the Staff



Canvas & Cove



Fun Games Conducted for the Workers



Best Safety Performance Awards to the Workforce

Earth & Essence



51st National Safety Day Closing Ceremony



Fun Games Conducted for the Workers



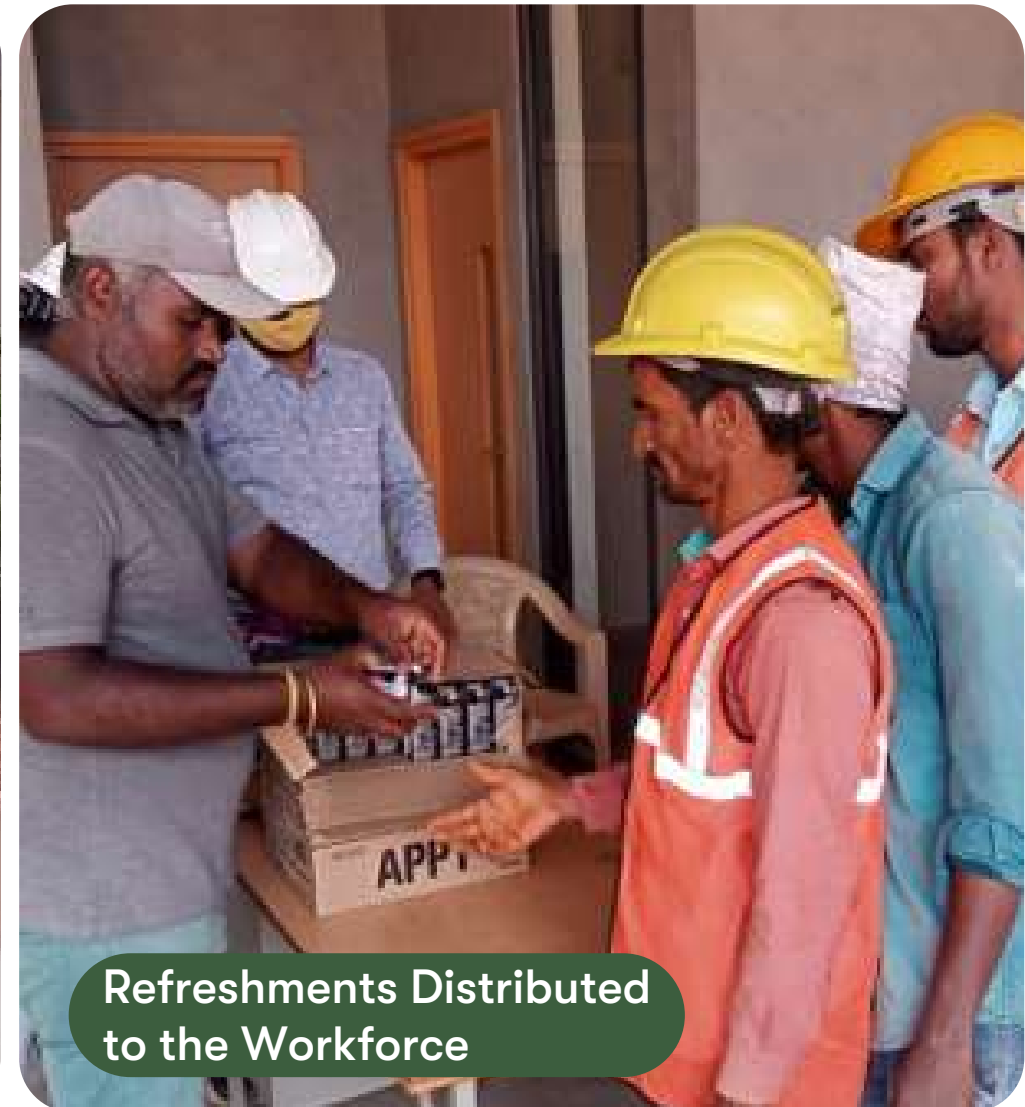
Magic Show Performances



Refreshments Distributed to the Workforce



Awards for the best safety performance workers



Refreshments Distributed to the Workforce

Sun & Sanctum



Atmos & Aura



Leaves & Lives



MARKETING

Emailers

Assetz 18 OAK

Serene homes that connect life with nature.

Discover a lifestyle so in-tune with the outdoors that every homecoming feels special.

5000 - 10000 SQFT | 1.10 Cr onwards | Sarajapur Ambale Road

5000 Sq Ft | 10000 Sq Ft | 15000 Sq Ft | 20000 Sq Ft

BOOK TODAY

9513778411 | enquiries@assetzproperty.com

Assetz

An address that says it all.

3 MINS FROM ORION MALL OFF CAJIBO ROAD

Columbus Area Project | 3 BHK | 1515 - 1970 | 1.93 Cr onwards

THE REWARD

3 BHK Ultra-Luxury Apartments | 1515 - 1970 | 1.93 Cr onwards

STAY TUNED FOR MORE DETAILS! PRE-REGISTER FOR EXCLUSIVE ACCESS TO LAUNCH PRICE.

9513778411 | enquiries@assetzproperty.com

Assetz COMMUNITY CIRCLE

We can't contain our excitement any longer!

An exclusive life drenched in plush luxuries and majestic greens is ready to meet you. Are you?

We are now RERA approved. PINKA/ERA/1251/446/PR/2012/200455

63° EAST TOWER F

OFF SARAJAPUR ROAD | 170 Mins from Orion Corporate Office

3 BHK Big Bakery Homes | 1420 - 1866 | ₹ 1.05 Cr onwards

REFER & EARN UP TO 25% ON THE BASIC HOME VALUE. LAST FEW DAYS TO AVAIL THE OFFER.

9513778401 | communitycircle@assetzproperty.com

Assetz

HEARD THE BUZZ? FEBRUARY 5, 2022

Unleash an exclusive life with a view over lush green landscapes in Sarajapur.

By Channel Partners, come join us early your excitement on the launch day and choose from premium units in our limited new towers.

63° EAST TOWER F

Off Sarajapur Road | 2.20 Cr from Orion Corporate Office

3 BHK Eco-Luxury Apartments | ₹ 88 L onwards

Avail 3.5% Brokerage Scheme

LAUNCHES ON 12TH FEBRUARY

BOOK YOUR CALENDARS AND JOIN US AT THE EXCLUSIVE LAUNCH EVENT.

Assetz

3.5% BROKERAGE

LAST FEW DAYS TO AVAIL IT

Dear Channel Partners, it's time you up your game and show us what you got. Drive as many sales as possible until the launch day and take home the best of incentives!

marq 3.0

3 & 4 BHK Ultra-Luxury Apartments | ₹ 1.10 Cr onwards

LAUNCHES ON 12TH FEBRUARY

WE HOPE YOU'RE ALL READY UP!

Assetz

Whatever suits your eye, just bid and give it a try!

ASSETZ FURNITURE AUCTION

Watched for premium furniture at a price you desire? Well, here's your chance. Make your bid and take home from the best of our exclusive furniture collection.

Here's how it works:

1. Refer the attached email for details of Auctioned Furniture items.
2. The bidding window will be open for 24 hours post receiving this mail.
3. All interested parties can visit our email at assetzproperty.com starting your bids.
4. At the end of 24 hours, items will be sold to the highest bidder.

LET'S GET BIDDING!

Assetz LEAVES & LIVES

Homes that bask in luxury and nature

0-1 acre luxury development | Large windows for more lux & ventilation | Built around 100 old-world trees

25+ urban amenities | Thought for natural light & brighter living | Luxurious living spaces

THE DREAM SCHEME

Open a luxury home now by paying an EMI as low as ₹24,999 P.M. till possession.

9513778411 | enquiries@assetzproperty.com

Assetz

Worried about the weekend lockdown keeping you from your dream home?

We got you covered!

The great news is that you can still view the project and complete your homebuying experience through our virtual tour today. If you still wish to visit us personally, we request you to make a prior appointment. However, please note that only limited appointment slots will be available to visit our project office.

SCHEDULE A CALL NOW AND GET ACCESS TO:

- Virtual Tour
- Project Office
- Site Visit
- Home Loan

STAY HOME. STAY SAFE.

Assetz

A MILESTONE OF 1000+ CRORE SALES

On that note, let's come together as one and take a moment to reflect on our journey so far.

March 25, 2022 5 PM Onwards Cafeteria, Assetz HO

LOOKING FORWARD TO YOUR PRESENCE!

Assetz

147 units sold in just two days!

We'd like to thank each one of you for such an overwhelming response to the grand launch of our new homes at Orion 63 Degree East.

THE DREAM SCHEME

Own a luxury home by paying an EMI as low as ₹24,999 p.m. till possession.

63° EAST

Off Sarajapur Road | 1500 - 1900 | 1.93 Cr onwards

3 BHK Ultra-Luxury Apartments | ₹ 88 L onwards

If you haven't booked your dream home yet, get in touch with your RM today.

LAST FEW DAYS TO AVAIL SPECIAL LAUNCH OFFERS

9513778411 | enquiries@assetzproperty.com

Assetz

Experience spacious living.

An Assetz home is designed to offer every square foot efficiently to give you a higher standard of everyday living.

WIDE OPEN PLAN LAYOUT | 24x7 SECURITY | PREMIUM FINISHES | 24x7 MAINTENANCE SERVICE | 24x7 EMERGENCY SERVICE | 24x7 GYM | 24x7 SWIMMING POOL | 24x7 PARKING

THE DREAM SCHEME

Own a luxury home by paying an EMI as low as ₹24,999 p.m. till possession.

63° EAST | 63° EAST | 63° EAST | 63° EAST

2.5 B BHK | 2.5 B BHK | 2.5 B BHK | 3.5 B BHK

₹ 68 L | ₹ 82 L | ₹ 99 L | ₹ 1.08 Cr

Off New Main Road | Off Sarajapur Road | Off Sarajapur Road | Off Whitefield Road

LIMITED PERIOD OFFER. SCHEDULE A SITE VISIT TODAY.

9513778411 | enquiries@assetzproperty.com

Assetz

We've got properties worth investing.

If you are looking for real estate that is financially sustainable and offers the right kind of passive income - we've got the one you would love to own.

THE DREAM SCHEME

BOOK AN APARTMENT AT CAJIBO CREEK AND SAVE ₹2.5 Lakh. LIMITED OFFERS EXCLUSIVELY TILL MARCH 31, 2022

₹ 267 / DAY

2.5 B BHK | 2.5 B BHK | 2.5 B BHK

₹ 66 Lakh | ₹ 66 Lakh | ₹ 66 Lakh

Off New Main Road | Off Sarajapur Road | Off Sarajapur Road

BOOK NOW

9513778411 | enquiries@assetzproperty.com

Assetz EARTH & ESSENCE

Serene homes that connect life with nature.

Discover a lifestyle so in-tune with the outdoors that every homecoming feels special.

100% GREEN BUILDING | 24x7 SECURITY | PREMIUM FINISHES | 24x7 MAINTENANCE SERVICE | 24x7 EMERGENCY SERVICE | 24x7 GYM | 24x7 SWIMMING POOL | 24x7 PARKING

THE DREAM SCHEME

Own a luxury home by paying an EMI as low as ₹24,999 p.m. till possession.

19,999 P.M.

BOOK TODAY

9513778411 | enquiries@assetzproperty.com

Assetz

A chance to a life of abundance!

Assetz brings to you residences more than one to call home. Create this limited period investment opportunity to build a better plot and small special offers this season before.

EXCLUSIVE PRICE DISCOUNTS | EMI DOWN PAYMENT SCHEME | FLEXIBLE FINANCIAL PLAN

ATMOS & AURA

Off Airport (BIAL) Road | 1500 - 1900 | 1.93 Cr onwards

1 - 2 SALES | 3.5% | 3 - 5 SALES | 3.75% | 6 SALES & ABOVE | 4%

Valid only till March 31, 2022. Hurry!

FINAL REMINDER! BECAUSE YOU WOULDN'T WANT TO MISS THIS.

9513778411 | enquiries@assetzproperty.com

Assetz

EXCLUSIVE BROKERAGE SCHEME

Assetz brings to you an exclusive brokerage scheme to reward our best performing channel partners and associates. Offered for a limited period only. The offer is subject to change and is available on a first-come, first-served basis.

1200 - 2900 sq.ft | ₹ 62 Lakh onwards

atmos & aura

Off Airport (BIAL) Road | 1500 - 1900 | 1.93 Cr onwards

1 - 2 SALES | 3.5% | 3 - 5 SALES | 3.75% | 6 SALES & ABOVE | 4%

Valid only till March 31, 2022. Hurry!

FINAL REMINDER! BECAUSE YOU WOULDN'T WANT TO MISS THIS.

9513778411 | enquiries@assetzproperty.com

Assetz

A view for a lifetime!

Climb, experience a new height of luxury with high green horizons with 360° views of the city. The prime location of the project is a prime location for a lifetime. The project is a prime location for a lifetime. The project is a prime location for a lifetime.

THE REWARD

3 BHK Ultra-Luxury Apartments | 1500 - 1900 | 1.93 Cr onwards

STAY TUNED FOR MORE DETAILS. PRE-REGISTER TO AVAIL SPECIAL LAUNCH PRICE.

9513778411 | enquiries@assetzproperty.com

Assetz LEAVES & LIVES

Serene homes that connect life with nature.

Discover a lifestyle so in-tune with the outdoors that every homecoming feels special.

0-1 acre luxury development | Large windows for more lux & ventilation | Built around 100 old-world trees

25+ urban amenities | Thought for natural light & brighter living | Luxurious living spaces

THE DREAM SCHEME

Open a luxury home now by paying an EMI as low as ₹24,999 P.M. till possession.

9513778411 | enquiries@assetzproperty.com

Assetz

The Final Phase!

Park People.

marq 3.0

3 & 4 BHK Ultra-Luxury Apartments | ₹ 1.10 Cr onwards

EXCLUSIVE ACCESS TO PREMIUM UNITS | SPECIAL LAUNCH PRICE | BEST FINANCIAL PLANS

OFFERS FEBRUARY 12TH & 13TH TO BOOK A LUXURIOUS HOME AND HILL EAST COAST APARTMENTS. LAST CHANCE TO BOOK! LIMITED SLOTS AVAILABLE. VISIT US TODAY TO AVAIL SPECIAL LAUNCH OFFERS.

9513778411 | enquiries@assetzproperty.com

MARKETING

Digital Ads

In shorts

MARKETING

Newspaper

Standees

Assetz PRM/KA/RERA/1251/446/PR/240122/004654



For those who miss the old Bangalore charm and those who have never experienced it... PHASE 1 & 2 SOLD OUT

THIS IS YOUR CHANCE.

3rd WEEK OF NEW PHASE LAUNCH **65% SOLD!**

marq 3.0

- OFF WHITEFIELD ROAD (NEAR SRI SATHYA SAI BABA ASHRAM)
- 3 & 4 BHK ULTRA-MODERN APARTMENTS
- 11 CR ONWARDS

THE DREAM SCHEME **PAY JUST ₹ 10,999 P.M.** **TILL POSSESSION TO OWN A LUXURIOUS APARTMENT.**



5 Acres of Parks | Gardens & Walkways | 25+ Amenities | 4-acre Central Park | Linear Park | In-campus School | 80% Green + Open Space | 22-acre Integrated Township | Pet Park

CALL 91 6411 0088 | assetzproperty.com | rera.karnataka.gov.in | CREDIT | 

Assetz

Your exclusive chance to avail exciting brokerage schemes.

SPECIAL PRE-LAUNCH OFFER

THE REWARD
(Code Name)

1-2 SALES	3-4 SALES	5 SALES & ABOVE
3%	3.25%	3.5%

Disclaimer: Brokerage rates applicable till launch only.

REMEMBER, HIGHER THE SALES, HIGHER THE INCENTIVES.

CGI Artist's Impression | T&C Apply

Assetz

HOMES THAT FIT YOUR DREAMS. LOCATIONS THAT FIT YOUR NEEDS.

63° EAST
2 & 3 BHK ECO-LUXURY APARTMENTS
₹82 L ONWARDS
OFF SARJAPUR ROAD (NEAR PRIMUS SCHOOL)

TOWER A & F - JUST LAUNCHED

marq 3.0
3 & 4 BHK ULTRA-MODERN APARTMENTS
₹1.1 Cr ONWARDS
OFF WHITEFIELD ROAD (NEAR SRI SATHYA SAI BABA ASHRAM)

NEW PHASE - JUST LAUNCHED

7353663300 | enquiries@assetzproperty.com

CGI Artist's Impression | T&C Apply

Assetz

INTRODUCING

LUXURY PLOTTED DEVELOPMENT

atmos & aura

Before Devanahalli Toll Plaza | **1200 - 2900** SQFT PLOTS | ₹62 L ONWARDS

EARTH & ESSENCE

10 Minutes from Hebbal Flyover | **2400 - 4400** SQFT PLOTS | ₹1.6 CR ONWARDS

7353663300 | enquiries@assetzproperty.com

CGI Artist's Impression | T&C Apply

Assetz **marq 3.0**

**PAYING RENT IS A LIABILITY
PAYING EMI IS AN ASSET**

PAY JUST ₹ 10,999 P.M.

TILL POSSESSION AND OWN A LUXURIOUS APARTMENT.

PLEASE REACH OUT TO THE SALES REPRESENTATIVE FOR MORE DETAILS.

RERA NO. PRM/KA/RERA/1251/446/PR/240122/004654 | CGI Artist's Impression | T&C Apply

MARKETING

Standees

Assetz

LOCATIONS THAT FIT YOUR NEEDS.
— HOMES THAT FIT YOUR DREAMS. —

63° EAST
2 & 3 BHK
ECO-LUXURY APARTMENTS
₹82 L ONWARDS
OFF SARJAPUR ROAD
(12 MINUTES FROM WIPRO SEZ)

TOWER A & F LAUNCHING SOON

marq 2.0
3 BHK
ULTRA-MODERN APARTMENTS
₹1.13 Cr ONWARDS
Whitefield-Hoskote Road
(4 KM FROM PROPOSED METRO STATION)

NEW PHASE COMING SOON

7353663300 | enquiries@assetzproperty.com

CGI Artist's Impression | T&C Apply

Assetz

OFFERING THE BEST OF BOTH WORLDS.

SUN & SANCTUM
Off KR Puram
(Within BBMP Limits) | 2 & 3 BHK
BOUTIQUE APARTMENTS | ₹82 L ONWARDS

marq 2.0
Whitefield-Hoskote Road
(4 KM FROM PROPOSED METRO STATION) | 3 BHK
ULTRA-MODERN APARTMENTS | ₹99 L ONWARDS

Easy Down Payment Scheme | Flexi-Payment Plan | No Pre-Emi for 12 Months

LIMITED PERIOD OFFER

7353663300 | enquiries@assetzproperty.com

T&C Apply

Hoardings

Assetz **ಅಸ್ಸೆಟ್ಸ್**

INTRODUCING **marq 3.0**

3 & 4 BHK
ULTRA-MODERN APARTMENTS

₹ 1.1 CR
ONWARDS

OFF WHITEFIELD ROAD
NEAR SRI SATHYA SAI BABA ASHRAM

NEW PHASE — JUST — LAUNCHED

PHASE - 1 & 2 SOLD OUT

VISIT SITE TODAY
8152 997 700
assetzproperty.com

PRM/KA/RERA/1251/446/PR/240122/004654
CREDAI T&C Apply

Assetz

The grass is always greener on our side of town.

marq 3.0 **NEW LAUNCH**

PHASE 1 & 2 Sold Out

3 & 4 BHK
Ultra-modern apartments | ₹1.1 Cr Onwards

OFF WHITEFIELD ROAD

22-acre township • 30% park ratio
80% open space • 6 acres of parks

81399 97700 | assetzproperty.com

PRM/KA/RERA/1251/446/PR/240122/004654 | T&C Apply

MARKETING

Hoardings

Among **600+** Park People.
Amidst **6 acres** of Parks.
A new beginning awaits.

The grass is always greener on our side of town.

marq 3.0 **NEW LAUNCH**

PHASE 1 & 2 **Sold Out**

Assetz

3 & 4 BHK Ultra-modern apartments | **₹ 1.1 CR** Onwards

OFF WHITEFIELD ROAD

22-acre township • 30% park ratio
80% open space • 6 acres of parks

81399 97700 | assetzproperty.com

Assetz

CLUBHOUSE

Greet a new form of grandeur.

THE DOWNTOWN NEIGHBOURHOOD (code name)

LAUNCHING SOON

3 & 4 BHK Luxury Apartments

Close to everything you deserve.
Connected to every destination you desire.

Assetz

3 BHK ULTRA-LUXURY APARTMENTS

- ORION MALL 3 MIN
- EURO KIDS PRE-SCHOOL 3 MIN
- SHERATON GRAND 4 MIN
- COLUMBIA ASIA HOSPITAL 4 MIN
- MAHALAKSHMI LAYOUT METRO STATION 4 MIN
- WORLD TRADE CENTRE 6 MIN

T&C Apply | Stock Image

Assetz

INTRODUCING **BBH** BIG BALCONY HOMES

THE DREAM SCHEME

PAY JUST ₹9,999 P.M. TILL POSSESSION TO OWN A LUXURY HOME.

63° EAST **3 BHK** ECO-LUXURY APARTMENTS

BOOK TODAY TO AVAIL EXCLUSIVE PRICE DISCOUNTS.

PRM/KA/RERA/1251/A/6/PR/24/0122/004655 | T&C APPLY

Assetz

INTRODUCING **TWO NEW TOWERS**

Live the exclusive life.

63° EAST **3 BHK** ECO-LUXURY APARTMENTS

BOOK A PREMIUM CLUBHOUSE FACING UNIT TODAY

PRM/KA/RERA/1251/A/6/PR/24/0122/004655 | T&C APPLY

MARKETING

Hoardings

Assetz ಅಸ್ಸೆಟ್ಸ್

INTRODUCING **BBI** BIG BALCONY HOMES

63° EAST | 3 BHK ECO-LUXURY APARTMENTS | STARTING AT ₹88 LAKH ONWARDS | **NEW LAUNCH!** AVAIL EXCLUSIVE OFFERS

OFF SARJAPUR ROAD

81529 97700 | assetzproperty.com | rera.karnataka.gov.in | T&C Apply | CREDAT

Assetz ಅಸ್ಸೆಟ್ಸ್

INTRODUCING **BBI** BIG BALCONY HOMES

63° EAST | 3 BHK ECO-LUXURY APARTMENTS | STARTING AT ₹88 LAKH ONWARDS | **NEW LAUNCH!** AVAIL EXCLUSIVE OFFERS

OFF SARJAPUR ROAD

81529 97700 | assetzproperty.com | rera.karnataka.gov.in | T&C Apply | CREDAT

Assetz ಅಸ್ಸೆಟ್ಸ್

Park people, Join the tribe. PHASE 1 & 2 **SOLD OUT**

LAUNCHING **marq** 3.0 | 3 & 4 BHK ULTRA-MODERN APARTMENTS | 1.1 CR ONWARDS

OFF WHITEFIELD ROAD (NEAR SHI SATHYK SAI BABA ASHRAM)

VISIT SITE TODAY! 8152 99 77 00 | www.rera.karnataka.gov.in | CREDAT

Your in-campus school for all-round geniuses.

Chrysalis high

The school with the PUPA advantage.

CBSE • ICSE • IB

marq The better life

Assetz

marq 3.0

Find us at the heart of it all.

NEW LAUNCH

3 & 4 BHK Ultra-modern apartments | Off Whitefield Road

ITPL 10 mins | Metro Station 11 mins | KR Puram 12 mins

Phoenix MarketCity 20 mins | Indiranagar 25 mins

81399 97700 | assetzproperty.com | rera.karnataka.gov.in | T&C Apply | CREDAT

Assetz ಅಸ್ಸೆಟ್ಸ್

Live closer to nature within the city.

atmos & aura

LUXURY VILLA PLOTS | 1200 - 2900 SQFT

15 MINUTES FROM HERE BEFORE TOLL PLAZA

₹62 LAKH ONWARDS

15.6-ACRE DEVELOPMENT | 1.5 ACRES OF GREEN OPEN SPACES

8152 99 77 00 | assetzproperty.com | rera.karnataka.gov.in | CREDAT

marq 3.0 **NEW LAUNCH**

Leisure and luxury, revel in the best of both.

PHASE 1 & 2 **Sold Out**

22-acre township • 3 & 4 BHK premium apartments • 6 acres of parks • 38,000 sqft clubhouse • 80% open space

OFF WHITEFIELD ROAD

Assetz

MARKETING

Mobile Van Ads

Assetz **ಮಸ್ಕೆಟ್**

marq^{3.0}

— THE DREAM SCHEME —

PAY JUST ₹ 10,999 P.M.
Till Possession To Own A Luxury Apartment.

3 & 4 BHK Ultra-modern Apartments | **₹ 1.1 CR** Onwards

OFF WHITEFIELD ROAD (Near Sri Sathya Sai Baba Ashram)

PHASE 1 & 2 SOLD OUT

NEW PHASE - JUST LAUNCHED

TO VISIT SITE, CALL 7026 88 00 99 — PRM/KA/RERA/1251/446/PR/240122/004654 — T&C apply

Assetz **ಮಸ್ಕೆಟ್**

marq^{3.0}

1200+ Families Have found it. **Have you?**

NEW PHASE LAUNCHED

The only place in whitefield where luxury meets serenity!

3 & 4 BHK ULTRA-MODERN APARTMENTS | **₹ 1.1 CR** ONWARDS

OFF WHITEFIELD ROAD (NEAR SRI SATHYA SAI BABA ASHRAM)

PHASE 1 & 2 SOLD OUT

TO VISIT SITE, CALL 7026 88 00 99 — PRM/KA/RERA/1251/446/PR/240122/004654

Assetz **ಮಸ್ಕೆಟ್**

soho Gsky

Bringing a slice of New York to North Bangalore.

LAUNCHING SOON

3 & 4 BHK LUXURY APARTMENTS | **₹ 1.91 CR** ONWARDS

OFF HEBBAL (5 MIN FROM UPCOMING PHOENIX MALL)

VISIT SITE TO AVAIL EXCLUSIVE PRE-LAUNCH PRICE.

7026 88 00 99 — PRM/KA/RERA/1251/472/PR/250322/004785 — CGI Artist's Impression — T&C Apply

Assetz **ಮಸ್ಕೆಟ್**

soho Gsky

LAUNCHING SOON

3 & 4 BHK LUXURY APARTMENTS | **₹ 1.91 CR** ONWARDS

OFF HEBBAL (5 MIN FROM UPCOMING PHOENIX MALL)

VISIT SITE TODAY 7026 88 00 99 — T&C Apply

Assetz **ಮಸ್ಕೆಟ್**

marq^{3.0}

3 & 4 BHK Ultra-modern Apartments | **OFF WHITEFIELD ROAD** (Near Sri Sathya Sai Baba Ashram)

NEW PHASE JUST LAUNCHED

TO VISIT SITE, CALL 7026 88 00 99

Assetz **ಮಸ್ಕೆಟ್**

THE REWARD (Code Name)

LAUNCHING SOON

3 BHK ULTRA-LUXURY APARTMENTS | **3 MINS FROM ORION MALL** (OFF CHORD ROAD)

AVAIL SPECIAL PRE-LAUNCH OFFER

ENQUIRE TODAY! 7026 88 00 99

3 BHK **BOOK NOW** **TO AVAIL SPECIAL PRE-LAUNCH OFFER**

ULTRA-LUXURY APARTMENTS IN YESHWANTHPUR

7026 88 00 99 — T&C Apply

3 & 4 BHK LUXURY APARTMENTS | **₹ 1.91 CR** ONWARDS

OFF HEBBAL (5 MIN FROM UPCOMING PHOENIX MALL)

LAUNCHING SOON

7026 88 00 99 — T&C Apply

3 & 4 BHK Ultra-modern Apartments

OFF WHITEFIELD ROAD (Near Sri Sathya Sai Baba Ashram)

NEW PHASE JUST LAUNCHED

7026 88 00 99

MARKETING

Pillar Creatives



COMMUNITY CIRCLE

Emailers

Assetz **COMMUNITY CIRCLE**

147 units sold in just two days!

You'd like to thank each one of you for such an overwhelming response to the grand launch of our new towers at Atmos 63 Degree East!

TWO NEW TOWERS LAUNCHED

63° EAST

OFF SARAJAPUR ROAD
18 MIN FROM SARAJAPUR CORPORATE OFFICE

3 BHK EOP LUXURY APARTMENTS | 88 LAKH ONWARDS

REFER & EARN UP TO **2.5%** on the basic home value.

9513 778 401 | communitycircle@assetzproperty.com | T&C Apply

Assetz **COMMUNITY CIRCLE**

Experience spacious living.

An Assetz home is designed to offer every square foot efficiently to give you a higher degree of valuable area value.

- HIGH FLOOR PLAN EFFICIENCY
- TUCKER-IN WARDROBES
- DEEP REFRIGERANT SPACES
- WELL-PLANNED FURNITURE SITES, ELECTRICAL, LIGHTING AND STORAGE

THE DREAM SCHEME

Own a luxury home by paying EMI as low as ₹7,999 p.m. till possession.

63° EAST	SUN & SANCTUM	MURQ
2.6 BHK	2.6 BHK	3.6 BHK
11.55 Cr	11.55 Cr	11.55 Cr
₹2.6 Cr	₹2.6 Cr	₹2.6 Cr
Off Sarajapur Road	Off Sarajapur Road	Off Sarajapur Road

REFER & EARN UP TO **2.5%** on the basic home value.

9513 778 401 | communitycircle@assetzproperty.com | T&C Apply

Assetz **COMMUNITY CIRCLE**

Serene Homes That Connect Life With Nature.

Discover a lifestyle in-tune with the outdoors that every homeowner feels special.

26-ACRE TOWNSHIP | 40,000 SQFT CLUBHOUSE | 68% OPEN SPACE | 25+ AMENITIES

63° EAST

- OFF SARAJAPUR ROAD
- 2.6 BHK
- ₹11.55 Cr
- ₹2.6 Cr
- Off Sarajapur Road

THE DREAM SCHEME

₹7,999 P.M.

Call now to avail exclusive launch prices

9513778401 | communitycircle@assetzproperty.com

Assetz **COMMUNITY CIRCLE**

The beginning of a wonderful story.

Start the new year on a high note by investing in a luxury villa plot by Assetz. Let your new journey be all about making big decisions and achieving bigger dreams.

ATMOS 63° EAST

- 3200 - 3900 Sqft
- 4.2 Cr Onwards
- Off Intl. Airport Road

EARTH & ESSENCE

- 2900 - 4400 Sqft
- 1.8 Cr Onwards
- Off Intl. Airport Road

18° OAK

- 11000 - 16000 Sqft
- 2.2 Cr Onwards
- Sarajapur-Attibele Road

REFER & EARN UP TO ₹8 LAKH

9513 778 401 | communitycircle@assetzproperty.com | T&C Apply

Assetz **COMMUNITY CIRCLE**

Experience spacious living.

An Assetz home is designed to utilize every square foot efficiently to give you a higher degree of valuable area value.

- HIGH FLOOR PLAN EFFICIENCY
- TUCKER-IN WARDROBES
- DEEP REFRIGERANT SPACES
- WELL-PLANNED FURNITURE SITES, ELECTRICAL, LIGHTING AND STORAGE

THE DREAM SCHEME

Own a luxury row house now by paying EMI as low as ₹18,099 p.m. till possession.

EARTH & ESSENCE	soul & soil	LEAVES & LIVES
2.6 BHK	3.6 BHK	4 BHK
₹2.6 Cr	₹3.6 Cr	₹4.7 Cr
Off Intl. Airport Road	Off Home Road	Off Sarajapur Road

REFER & EARN UP TO **2%** on the basic home value.

9513 778 401 | communitycircle@assetzproperty.com | T&C Apply

Assetz **COMMUNITY CIRCLE**

This 2022, make a shift to a better lifestyle.

Let this new year chime with fulfilled dreams. Invest in your dream home in the most coveted locations of Bangalore and embrace the unique experience of a life centered around you.

Now pay an EMI as low as ₹18,999 P.M. till possession to own a luxury row house with Assetz.

soul & soil	EARTH & ESSENCE	LEAVES & LIVES
3 BHK	3.6 BHK	4 BHK
₹2.6 Cr	₹2.6 Cr	₹2.7 Cr
Off Home Road	Off Intl. Airport Road	Off Sarajapur Road

SCHEDULE A VIRTUAL SITE VISIT, TODAY!

₹6 LAKH

9513 778 401 | communitycircle@assetzproperty.com | T&C Apply

Assetz **COMMUNITY CIRCLE**

Build your home amidst world-class amenities!

18-ACRE DEVELOPMENT | 244 PLOTS | 1.8 ACRES OF OPEN SPACE | 15+ LUXURY AMENITIES

ATMOS 63° EAST

- ₹2 Lakh
- Plot Range
- Off Intl. Airport Road

REFER & EARN UP TO 2%

9513778401 | communitycircle@assetzproperty.com

Assetz **COMMUNITY CIRCLE**

Serene Homes That Connect Life With Nature.

Discover a lifestyle in-tune with the outdoors that every homeowner feels special.

22-ACRE TOWNSHIP | 6 ACRES OF PLOT | 80% OPEN SPACE | 25+ AMENITIES

MURQ

- OFF WHITEFIELD ROAD
- 3.6 BHK
- ₹15 Cr

THE DREAM SCHEME

₹10,990 P.M.

BOOK TODAY

9513778401 | communitycircle@assetzproperty.com

Assetz **COMMUNITY CIRCLE**

EXPERIENCE A 'HOLISTIC' LIFE WITH ASSETZ!

The colours of nature and life come together in a celebration of Assetz. Sustainability that goes beyond luxury and comfort, an ambition, a change over a daily life to something real & forever. This, too, find the answer for all the answers of your life. Find your future home with Assetz!

ATMOS 63° EAST

- Off Sarajapur Road
- ₹18 Cr

18° OAK

- Off Sarajapur Road
- ₹18 Cr

REFER & EARN UP TO 2%

9513778401 | communitycircle@assetzproperty.com

Assetz **COMMUNITY CIRCLE**

PROPERTIES WORTH SHARING

If your friends and family are looking for real estate that are luxurious, sustainable and offer the right kind of lifestyle, we've got the ones they will love to own.

BOOK A LUXURY ROW HOUSE AT

EARTH & ESSENCE

- 3.6 BHK
- ₹3.6 Cr
- Off Intl. Airport Road

REFER YOUR FRIENDS AND FAMILY TO US AND EARN 2% REFERRAL REWARDS*

9513778401 | communitycircle@assetzproperty.com

COMMUNITY CIRCLE

Web Banners

63° EAST

Homes with uninterrupted views!

Premium 3 BHK

Off Sarjapur Road

LAUNCHING ON **FEBRUARY 5, 2022**

BLOCK YOUR UNIT TODAY!

KNOW MORE

New launch in Sarjapur's Most beloved township.

Introducing **BBI** BIG BALCONY HOMES

3 BHK Eco-luxury Apartments

63° EAST

Pay just **9,999 P.M.** till possession to own a luxury home.

THE DREAM SCHEME

KNOW MORE

63° EAST

TWO NEW PREMIUM TOWERS

LAUNCHING ON **FEBRUARY 5, 2022**

YOUR CHANCE TO LIVE THE EXCLUSIVE LIFE.

3 BHK ECO-LUXURY APARTMENTS

OFF SARJAPUR ROAD

BLOCK YOUR CALENDARS!

KNOW MORE

TOWER A TOWER F

Signature

TWO NEW TOWERS + ONE NEW PHASE

WE ARE NOW RERA APPROVED!

LAST CHANCE TO REFER & EARN **2.5%** ON THE BASIC HOME VALUE

CLICK HERE TO REFER

Disclaimer: Offer valid only on new tower inventory.

mirq^{3.0}

63° EAST

Employee Engagement Activity

ANNIVERSARY CELEBRATION

Employees who have completed milestone years with the organization in the last quarter.



SARITHA V S

Head - Human Resources



C CHRISTOF JENKINS

Senior Manager - MEP Services

EMPLOYEE ENGAGEMENT

As a part of employee engagement initiative various webinars related to health and wellness were organized through our insurance broker during last quarter FY Q4 (January-March 2022)

- **Redefine Wellbeing: Think Holistic**
- **Financial Wellbeing: Tax Planning for Salaried Professionals**
- **Mental Wellbeing: Making each morning count**
- **COVID 19 (Omicron): All You Need to Know About the New Variant of COVID**
- **COVID Safety Series 3.0 - Prevent, Protect and Ensure Safety**
- **COVID 19 - Children Vaccination Guidelines**
- **COVID 19 (Omicron) Guidelines on Home Quarantine & Treatment Protocol**
- **COVID 19 (Omicron) Refreshing the Basics & Preventive Measures**
- **Screening procedures for the most common types of cancer for both men and women**



WOMEN'S DAY CELEBRATION

March 08, 2022



As a part of the Women's Day celebration, all women employees were taken out for a celebratory luncheon at the Radisson Blue, Atria Café.



Various webinars listed below were organized through our insurance broker during the Women's Day week, scheduled between 8th – 12th March 2022.

- Financial wellbeing session
- #BreakingtheBias campaign
- Gender equality

As part of the #BeEqual Women's Day celebration, various fun filled activities and games were organized for all employees. Total 11 teams consisting of three members participated in the activities and below team were declared as winners, 1st, and 2nd runners up.



Winner
Team Warriors

- Prasanna C V
- Manasa
- Janarthanan Baskaran

1st Runners Up
Team Titans

- Bharath V
- Sumanth N
- Sinchana A M

2nd Runners Up
Team Superstar

- Nikitha Mohan
- Sandeep George
- Vijayakumar R

MILESTONE OF 1000 CR SALES CELEBRATION

To celebrate the achievement of 1000Cr sales for FY 2021-2022 a celebratory evening was organised for all employees to acknowledge the contribution of every department in the organization.



Joining Our Fold

It gives us immense pleasure to welcome the following people who have joined Assetz Group between January – March 2022



Sachin KP
Executive - Accounts

Sachin comes with over 3 years of experience in the field of Accounts. He holds a Bachelor's degree in Commerce from Tumkur University. Prior to joining us, he was associated with M/s Pepe Jeans Inner Fashion Pvt Ltd as Accounts Executive.



Nisha S
Executive - EMT

Nisha is a Fresher and holds a Bachelor's degree in Science from Mysore University.



Rida Sarmudd
Senior Executive - Sales

Rida comes with over 2 years of experience in the field of Sales. She holds a Bachelor's degree in Arts from Bangalore University. Prior to joining us, she was associated with Investoexpert Advisors as Assistant Manager - Sales.



Sajeev P Nair
Senior Manager – Sales

Sajeev comes with over 14 years of experience in the field of Sales. He holds a Bachelor's degree in Computer Science from Manonmaniam Sundaranar University. Prior to joining us, he was associated with Lalit Asia Dwellings Pvt Ltd as DGM – Sales & Marketing.



Sauvik Sekhar Paul
Manager – Sales

Sauvik comes with over 7 years of experience in the field of Sales & Computer Research. He holds a Bachelor's degree in Science from Bundelkhand University. Prior to joining us, he was associated with Assettrust Services Pvt Ltd as AGM – Sales.



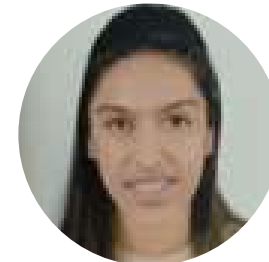
Sushmita Das
Senior Executive - Marketing

Sushmita comes with over 4 years of experience in the field of Marketing. She holds a Bachelor's degree in Computer Science from Bangalore University. Prior to joining us, she was associated with Bonito Designs Pvt Ltd as Content Specialist.



Pallavi S
Graphic Designer

Pallavi comes with over 4 years of experience in the field of Graphic Design. She holds a Bachelor's degree in Fine Arts from Mysore University. Prior to joining us, she was associated with Group Pharmaceuticals Ltd as Graphic Designer.



K S Ganga
Executive - EMT

Ganga is a Fresher and holds a Bachelor's degree in Business Administration from Bangalore University.



Vivek J
Manager - Business Development

Vivek comes with over 8 years of experience in the field of Business Development. He holds an MBA in Marketing from Pondicherry University. Prior to joining us, he was associated with Concorde Group as Manager - Business Development.



Abdul Rouf Bhat
Manager - Sales

Abdul comes with over 9 years of experience in the field of Sales. He holds an MBA from Punjab Technical University. Prior to joining us, he was associated with Property Pistol as Manager Sales.



Anant Maruti Shanbhag
Senior Engineer - QS

Anant comes with over 6 years of experience in the field of QS. He holds a Bachelor's degree in Civil Engineering from VTU, Belgaum. Prior to joining us, he was associated with Sumadhura Infracon Pvt Ltd as QS Engineer.



Kiran Kumar A
Senior Project Engineer

Kiran comes with over 7 years of experience in the field of Civil Engineering. He holds a Bachelor's degree in Civil Engineering from VTU, Belgaum. Prior to joining us, he was associated with JMC Projects as Senior Project Engineer.



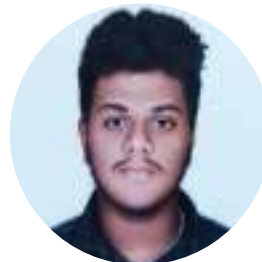
P Sudhanva Chadaga
Graduate Engineer Trainee

Sudhanva is a Fresher and holds a Bachelor's degree in Civil Engineering from VTU, Belgaum.



Kanigiri Srihitha
Interior Designer

Srihitha comes with over a year of experience in the field of Interior Design. She holds a Bachelor's degree in Architecture from NIT, Tiruchirappalli. Prior to joining us, she was associated with Living Design as Designer.



Pavan Kumar H
Executive - EMT

Pavan is a Fresher and holds a Bachelor's degree in Commerce from Bangalore University.



Vikas BR
Assistant Manager - Sales

Vikas comes with over 8 years of experience in the field of Sales. He holds a Master's degree in Commerce from Karnataka Open University. Prior to joining us, he was associated with Brigade Group as Senior Relationship Associate.