

The word "CONNECT" in a large, bold, white, sans-serif font, centered on the page. A light teal line with circular nodes is positioned around the text, starting from the top left, going down, then right, then up, then right, then down, then right, ending at the bottom right.

CONNECT

The date range "JULY - SEPTEMBER 2021" in a white, sans-serif font, enclosed in a white rounded rectangle. A light teal line with circular nodes is positioned around the text, starting from the top left, going down, then right, then up, then right, then down, then right, ending at the bottom right.

JULY - SEPTEMBER 2021

“Passion is the path to peak performance.”

Dear Team,

The real estate market has become more competitive than ever before, but when you are powered by the best people, you are only bound to achieve the extraordinary. So let us look back and reflect on the past quarter that has put the business to a whole new level. Despite fierce competition and fluctuating market conditions, the number of deals that we closed in the last quarter speak volumes about how wonderfully we have performed. All of this was a result of our combined efforts, where each one of us added to the excellence in our own unique way. Since appreciation is more than saying thank you and sometimes a pat on the back just isn't enough, the employees were given their due recognition by the management for their performances.

Years ago, we had laid the foundation for a future of sustainable and profitable growth and with every new project that we bring forth, we maximise the value we bring to our customers, business partners, and stakeholders alike. The successful launch of our much-anticipated project “Atmos & Aura” is a witness to the same. Additionally, to expand to new territories, we have aligned a few other luxury projects in the coming months, namely, code name Grand, code name The Downtown Neighbourhood along with new phases and towers of our existing projects, such as, Soul & Soil, Canvas & Cove, Leaves & Lives, Marq 3.0, Earth & Essence Phase 2 and 63 Degree East Tower A & F. With each new project comes a plethora of opportunities to cater to our growing consumer base and the ever-expanding market needs.

Moreover, as the New Year is approaching, let's be ready to embark on the beautiful journey that lies ahead of us. To make the most of it, it is imperative that we must set the pace for the rising demand and review our targets, while carving out strategic ways to boost the sales and enquiries. To fuel the progress in achieving our goals, it is critical we continue to outperform our competitors on innovative marketing strategies and lucrative offers.

With that in mind, let's work together towards lending coherence to our initiatives as teamwork makes every combat easier and it's the sum of all the small parts that leads us to victory!

Our strength lies in our tenacity. Keeping our previous successes in mind, that were achieved in a time when we were forced to adapt to very adverse circumstances, let us continue to create the breakthrough that defines our business and takes it to the next level, for we haven't come this far to only come this far. We have a long, long way ahead!

AKSHAY DEWANI

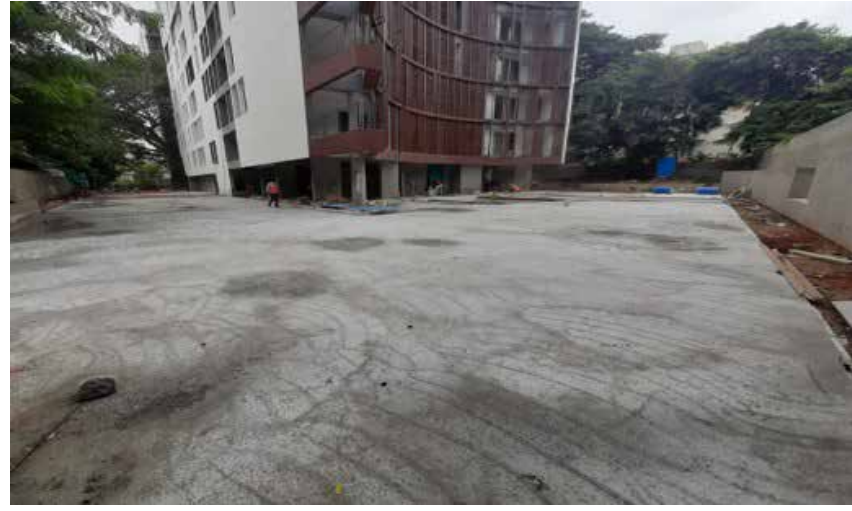
PROJECT UPDATES

38 & BANYAN

- The external facade work has been completed.
- The fire driveway work is in progress.
- The terrace level clubhouse area work is in progress.
- The swimming pool, water bodies and amphitheatre works are in progress.
- The basement, shafts and common areas servicing work is nearing completion.
- The internal units finishing work has been completed.
- The inspection, pre-delivery and handover process are in progress.



38 & BANYAN



PROJECT UPDATES

SOUL & SOIL

PHASE 1A

- The wooden flooring and final coat painting works in Block A, B, C, D1-7 and D8-15 have been completed.
- The customer inspection process is in progress.
- The occupancy certificate has been obtained.
- The consent for operation has been obtained from KSPCB.
- The substructure and 1st floor slab works have been completed in EWS.

PHASE 1B

- The internal finishing work is in progress.
- Block E1-5 - The 2nd coat putty and tiling works have been completed. The UPVC fixture work is in progress.
- Block F – The waterproofing work has been completed. The tiling work is in progress.
- Block G – The waterproofing work is in progress.
- Block H - The 2nd coat internal putty, unit and toilet tiling works have been completed.
- Block E6-10 - The waterproofing work is in progress.



Crazy Pattern Pathway



External Seater



Street Plaza



Driveway Drain Cover

PROJECT UPDATES

SOUL & SOIL

PHASE 2

- The superstructure work in Block J1-7, K1-5, K6-10 and N is in progress.
- The substructure work in Block J8-15 is in progress.
- The substructure and 1st floor slab works have been completed in EWS.

EXTERNAL

- Phase 1A – The hardscape work has been completed.
- The landscape planting work is in progress.
- The compound wall and painting works in Phase 1A are in progress.
- The barbed wire fencing work has been completed.
- Clubhouse – The rehabilitation, painting, HVAC and electrical works are in progress.
- The extension area tiling work has been completed.
- Phase 1B - The road MEP work between Block E6-10 and F is in progress.



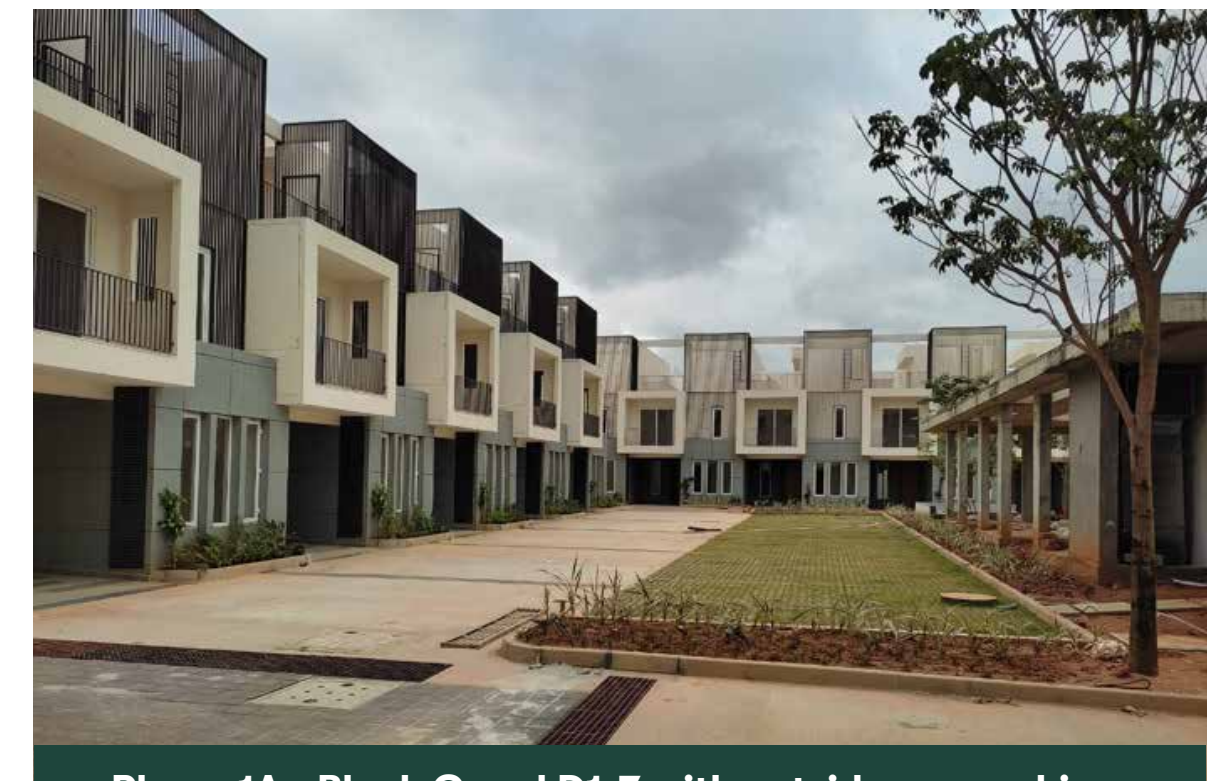
External Work



Phase 1A - External Landscape



Phase 1A - External Landscape



Phase 1A - Block C and D1-7 with outside car parking grass pavers

SOUL & SOIL



Phase 1A - Main Entrance



Phase 2A - The footing work in Block J8-15 is in progress.



Phase 2A - Overview

PROJECT UPDATES

HERE & NOW

TOWER 1

- The door installation, 1st coat of painting, CP & Sanitary fixture works in Wing 2 are in progress. The final coat painting, wooden flooring, final PDI report closure works in Wing 1 are in progress. The customer inspection and handover process in wing 1 have been initiated.

TOWER 2

- The customer inspection for 50% of the units have been completed and handover process is in progress.

COMMON AREA

- Tower 1 & 2 - The entrance lobby flooring and ceiling aluminum baffle fixing works have been completed. The painting work is in progress.
- Basement - The final coat painting and cleaning works are in progress.
- Clubhouse - The entrance lobby, ground floor toilet false ceiling, swimming pool & deck waterproofing works have been completed.
- The screed preparation, lift installation, and elevation glazing MS support works are in progress.



Tower 1 & 2 Overview



Street Plaza



Driveway Drain Cover

PROJECT UPDATES

HERE & NOW

EXTERNAL DEVELOPMENT

- The security cabin structure, blockwork plastering, entrance gate, entrance portal, and quadrangle roof ACP works have been completed.
- The entrance pavers, aluminium skin wall, and central podium driveway kota stone works are in progress.



The clubhouse elevation glazing MS support work has been completed.



The quadrangle roof ACP work has been completed.

PROJECT UPDATES

MARQ 2.0

PHASE 2 BUILDING-02 - STRUCTURE

- The structure completion milestone (typical floor) of Building-02 has been achieved during this quarter.

PHASE 2 BUILDING-02 - FINISHES

- The tiling and painting finishing works in 5th to 7th floor are in progress.
- The waterproofing & internal plumbing (concealed) works are nearing completion in both the wings.
- The PHE shaft work is in progress.
- The UPVC window work in 4th floor is in progress.

PHASE 2 BUILDING-03

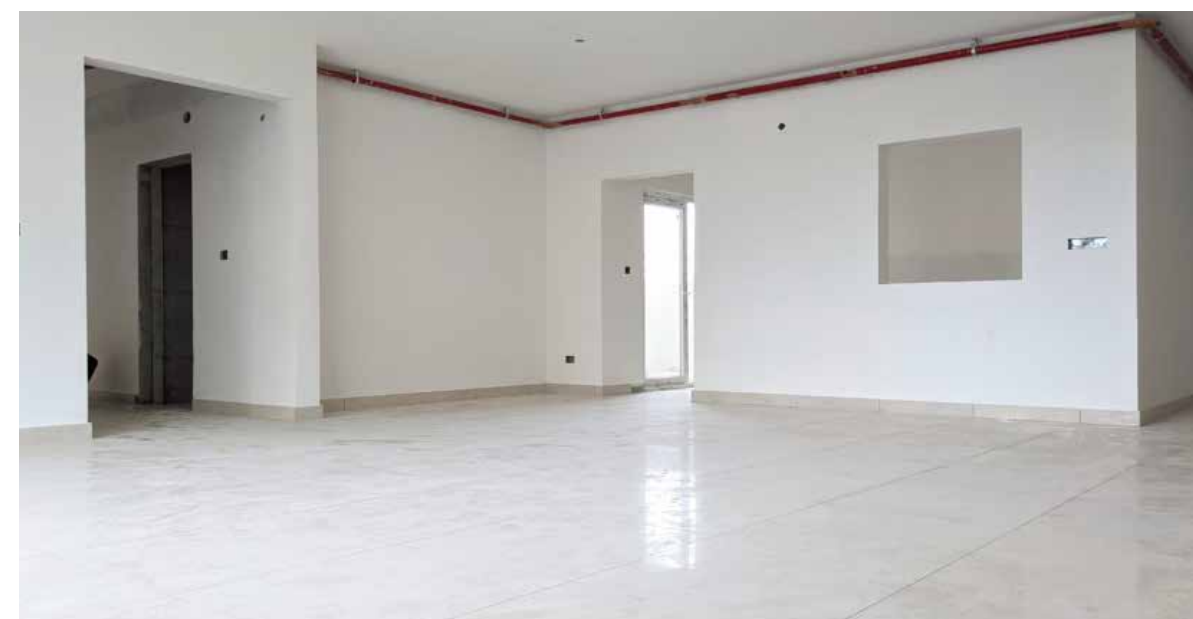
- The 2nd floor level slab work of Building-03 has been completed.
- The 1st slab with aluminum formwork in 3rd floor level of L-wing has been completed.
- The upper level work is in progress.



North View



South View



Phase 2 Building-02 - Finishes



MARQ 2.0



Building-02 - Finishes



Phase 2 Building-02 - Southwest View



Phase 2 Building-02 - Northwest View

PROJECT UPDATES

SUN & SANCTUM

WING 1 & 2

- The ground floor superstructure work is in progress.

WING 3

- The foundation, grade slab and ground floor slab works are in progress.

WING 4 & 5

- The foundation work is in progress.
- The retaining wall waterproofing work is in progress.



WING 1 & 2



WING 3

SUN & SANCTUM



WING 4 & 5



INFRA MEP WORK



PROJECT UPDATES

18 & OAK

- The RBI layer-2 work near culvert has been completed from plot 56 to 64.
- The inside golf 70 Rmt sewage pumping line work has been completed.
- The plumbing & electrical infra works are in progress.

PHASE 2

- The main road 610/690 Rmt concrete work has been completed from plot 35 to 58.
- The main road concrete laying work has been completed from plot 56 to 58

PHASE 3

- The 200 Rmt infra electrical work has been completed from plot 69 to 80.
- The road concrete laying work near culvert has been completed.
- The PHE manhole construction work is in progress from plot 88 to 102.

PHASE 4

- The crossroad DWC pipe laying for infra electrical work is in progress.



Infra Road Work - Phase 2



Infra Road Work - Phase 3

18&OAK



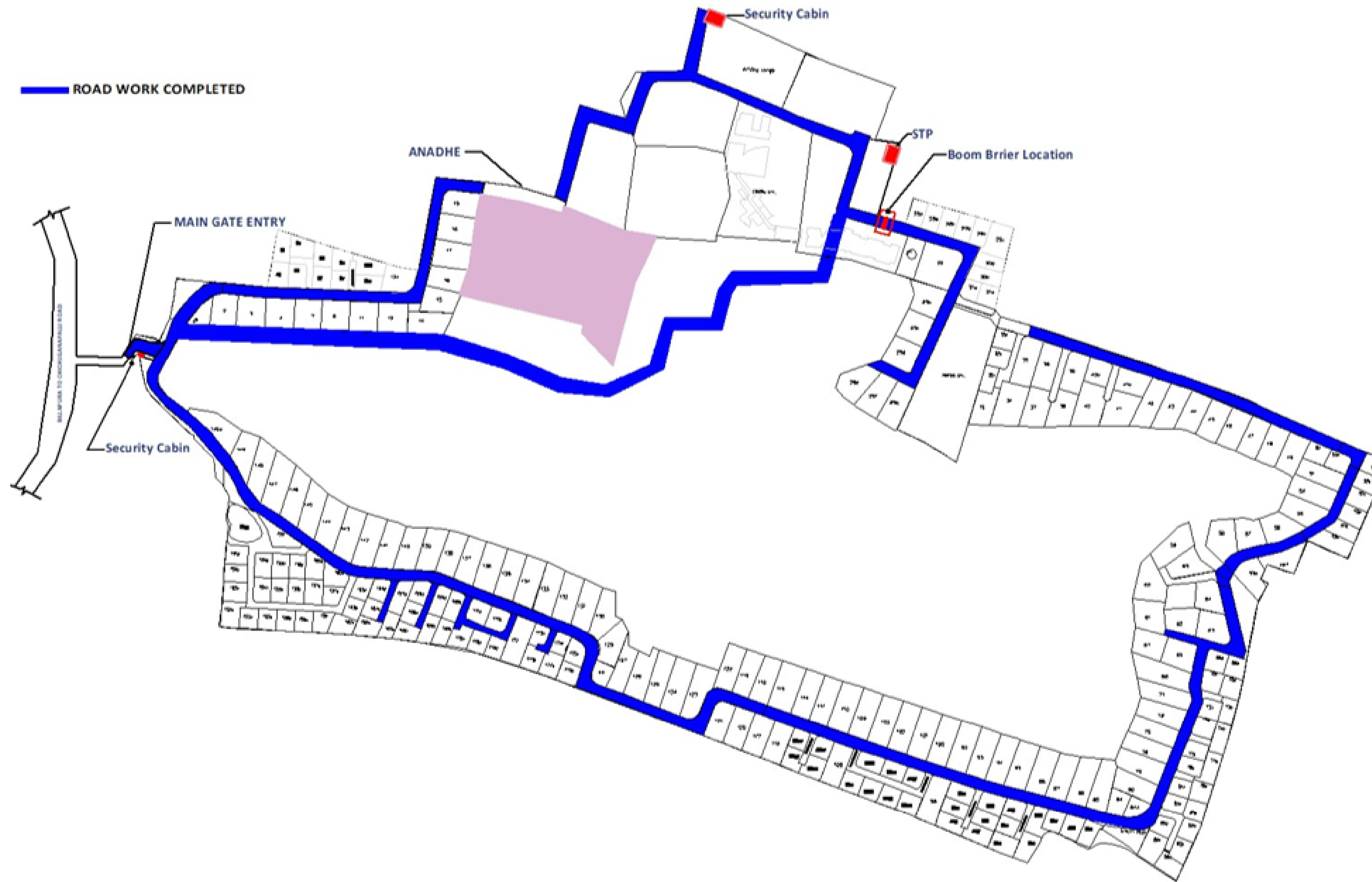
Infra MEP Work



Plumbing & Electrical Infra Work



18&OAK



The road construction work is nearing completion.

PROJECT UPDATES

ATMOS & AURA

PHASE 1 - PLOTTED DEVELOPMENT

- The sewage pipeline work for 5/6 roads has been completed.
- The water supply pipeline work for 4/6 roads has been completed.
- The storm water drainage work for 4/6 roads has been completed.
- The road subbase preparation work is in progress.

PHASE 2 & 3 - PLOTTED DEVELOPMENT

- The sewage pipeline, water supply pipeline and underground electrical supply works are in progress.



Storm Water Drain – Phase 1



Subgrade For Roads – Phase 1



STP Excavation Completed

PROJECT UPDATES

63° EAST

TOWER D

- The internal and external final coat painting, podium finishing, and external development works are in progress.
- The PDI & client inspections, deep cleaning work and final handover of units are in progress.
- The occupancy certificate for the tower has been received.
- The kitchen, wardrobe and vanity installation work for 150 out of 216 flats (opted for carpentry scheme) has been completed.
- Around 210 out of 312 flats have been cleared for 1st inspection and 125 flats have been cleared for final handover.

TOWER B

- The typical floor concrete work is in progress in B1 – 4th floor, B2 – 6th floor, and B3 – 7th floor.



Tower D



Tower D – Completed Units

63° EAST



Tower D – Completed Units



Podium Hardscaping



External Landscaping



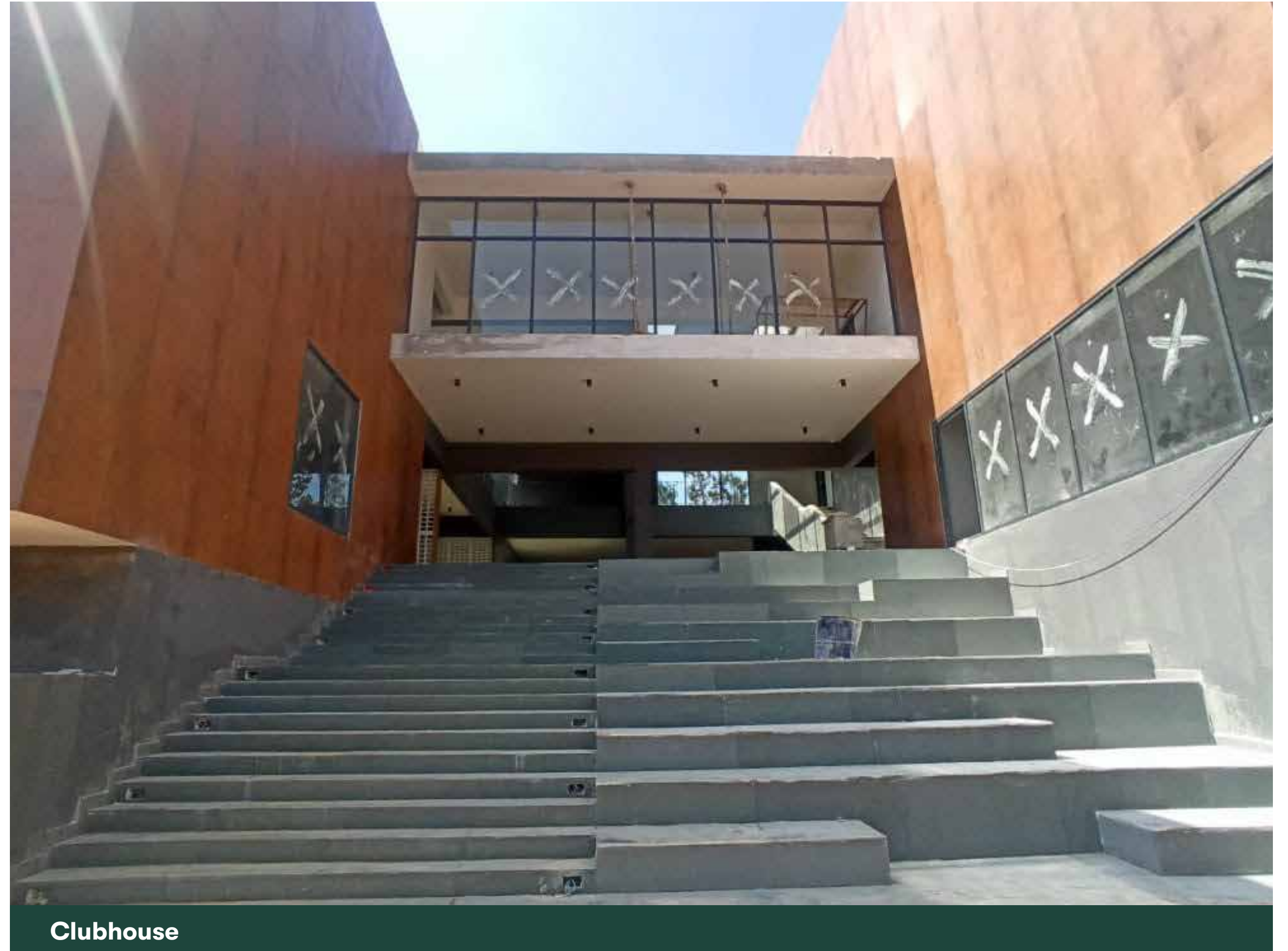
Tower B - B1, B2 & B3 Block Aerial View

PROJECT UPDATES

63° EAST

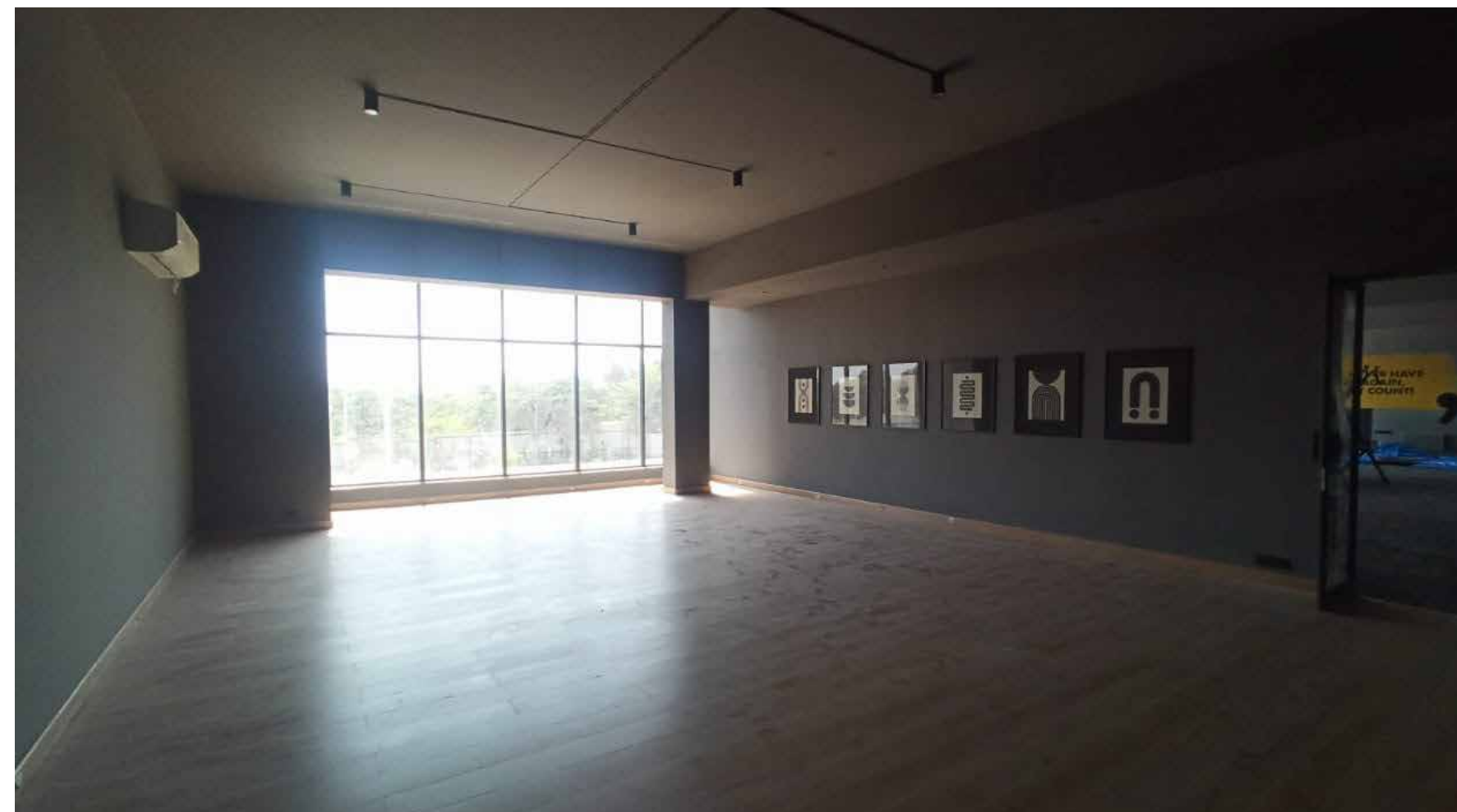
63° EAST - CLUBHOUSE

- The final finishing work of internal amenities like gym, yoga room, badminton court, table tennis room, games room, squash court, etc. has been completed.



Clubhouse

63° EAST



Clubhouse Interior

PROJECT UPDATES

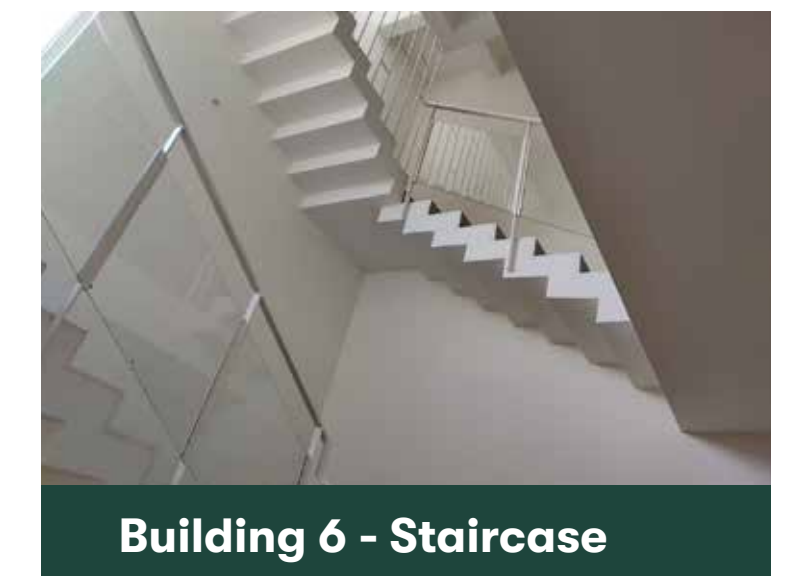
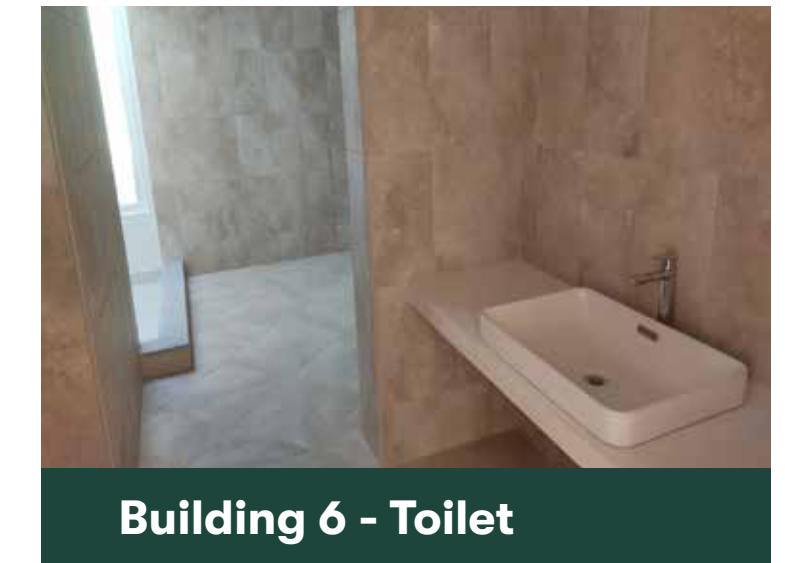
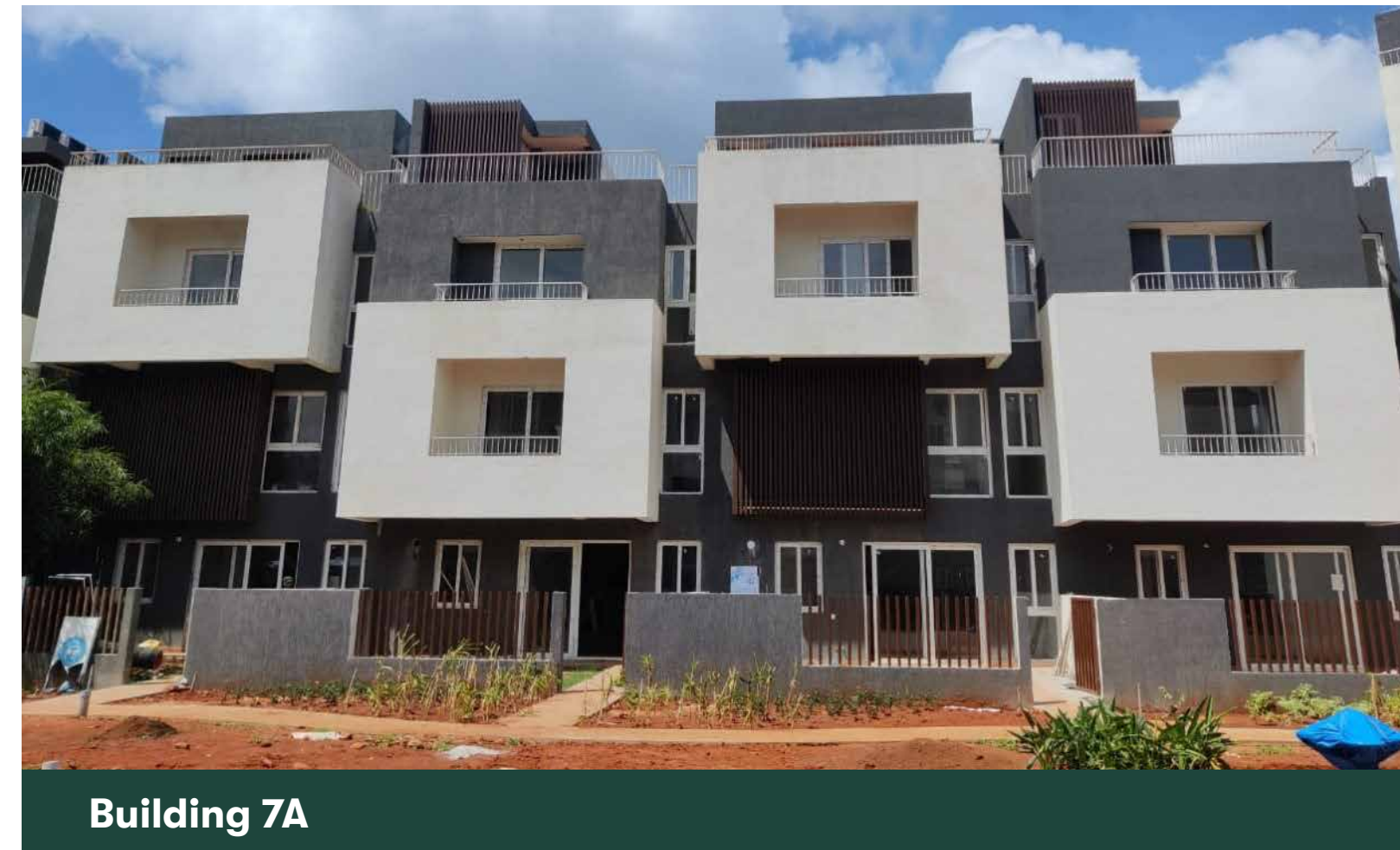
EARTH & ESSENCE

BUILDING 6 (5 BHK - 9 ROW HOUSES)

- The wooden doors installation work in all 9 units has been completed.
- The tile grouting work in all 9 units has been completed.
- The final coat painting work in 3 units has been completed.
- PDI Status – The 1st inspection of all 9 units and 2nd inspection of 3 units have been initiated.

BUILDING 7A (4 BHK - 5 ROW HOUSES)

- The wooden doors installation work in 4 units has been completed.
- The tile grouting work in 4 units has been completed.
- The final coat painting work in 3 units has been completed.
- PDI Status – The 2nd inspection of units has been initiated.



EARTH & ESSENCE



Building 6 - Toilet



Building 6 - Staircase



Building 6 - Entrance



Internal Road between Building 7B & Building 3



Internal Road in front of Building 6



Building 6 - Balcony

PROJECT UPDATES

EARTH & ESSENCE

BUILDING 7B (4 BHK - 7 ROW HOUSES)

- The UPVC windows installation work in all 7 units has been completed.
- The 1st coat of internal painting work in all 7 units has been completed.
- The 2nd coat of internal painting work in 4 units has been completed.
- PDI Status – The 1st inspection of 5 units and 2nd inspection of 4 units have been initiated.

BUILDING 3 (3 BHK - 12 ROW HOUSES)

- The waterproofing work in all 12 units has been completed.
- The putty work in 3 units has been completed.
- The tiling work in 6 units has been completed.

BUILDING 5 (3 BHK - 12 ROW HOUSES)

- The footing excavation work is in progress.



Building 7B



Building 3



Building 5



PROJECT UPDATES

EARTH & ESSENCE

CENTRAL SPINE

- The pathway work has been completed.
- The granite coping work has been completed.
- The softscape work is in progress.

CLUBHOUSE

- The lift installation work has been completed.
- The MS Fins work has been completed.
- The concube work has been completed
- The glazing work has been completed.
- The swimming pool structure work has been completed.
- The tennis court and half basketball court works are in progress.



Badminton Court



Fire Pit



Multipurpose Hall



Indoor Games Room



Swimming Pool



Gym



Kids' Play Area



Clubhouse



Central Spine

PROJECT UPDATES

EARTH & ESSENCE

PHASE 3 - PLOTTED DEVELOPMENT

- The GSB laying work has been completed.
- The STP slab work has been completed.
- The precast compound wall work has been completed.
- The kerb fixing work is in progress.



Phase 3 - Plotted Development



Phase 3 - Precast Compound Wall

PROJECT UPDATES

LEAVES & LIVES

- **Building 1** - The ground floor slab work in 2 units has been completed.
- **Building 2** - The 1st floor slab work in 2 units has been completed.
- **Building 3** - The structural work in 10 units has been completed.
- **Building 4** - The 1st floor slab work in 6 units and 2nd floor slab work in 1 unit have been completed.
- **Building 5** - The ground floor slab work in 4 units has been completed.
- **Building 6** - The 1st floor slab work in 6 units and 2nd floor slab work in 5 units have been completed.



Aerial View

LEAVES & LIVES



Building 1



Building 2



Building 3



Building 4



Building 5



Building 6

PROJECT UPDATES

CANVAS & COVE

Phase 1 - Excavation, shell & core construction work status

- **Tower A** - The excavation work has been completed. The rock breaking work is in progress.
- **Tower B** - The excavation work has been completed. The rock breaking work is in progress.
- **Tower C** - The excavation work has been completed. The rock breaking work is in progress.
- **Tower D** - The excavation work has been completed. The shell & core construction work is in progress.
- The footing work is 96% completed.
- The 1st and 2nd lift columns work is in progress.



Phase 1



Tower A



Tower B

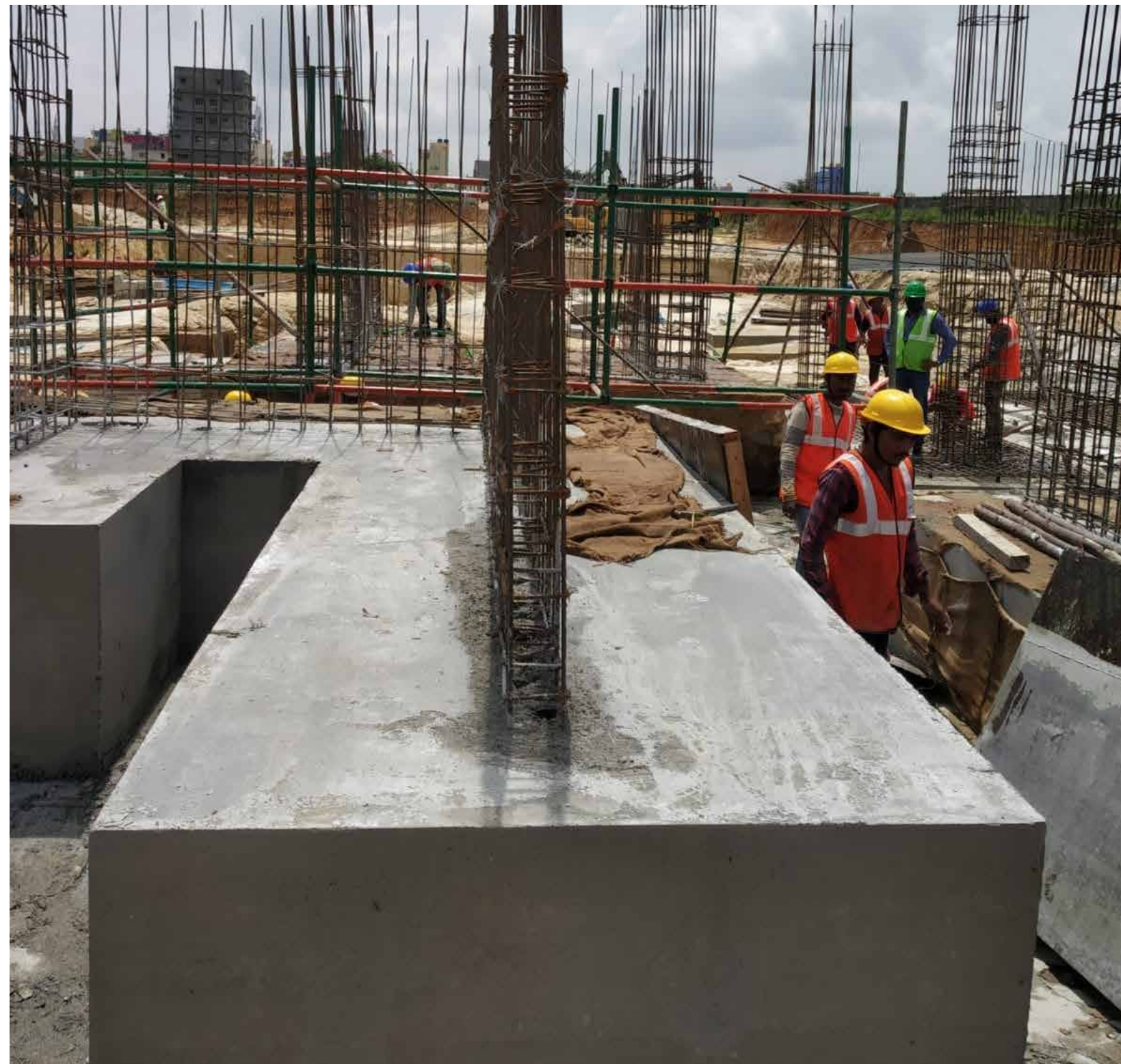


Tower C



CANVAS & COVE

Tower D



ENVIRONMENTAL HEALTH & SAFETY

Workplace safety training is as vital as workplace safety itself. It enables the management to ensure a safe and healthy work environment. It also helps the employees to recognize safety hazards and take necessary precautions, while understanding the best safety practices and expectations.

Training details at our project sites for the month of Jul, Aug, Sep 2021:

Safety induction trainings to new labourers and toolbox talks were conducted, which covered the following topics – Covid-19 awareness training, confined space safety, use of power tools, material handling, monsoon awareness, height work safety, scaffolding safety, construction vehicle movement, proper use of personal protective equipment, housekeeping, general safety and carpentry safety.

In addition to above trainings, the following practices were organised: -

- TPI (Third Party Inspection) was conducted for all lifting items.
- Vaccination drive was conducted for all workers.
- Grocery items were distributed to 141 workers.
- Covid precautionary safety kits were distributed to 50 workers. Each kit consisted of sanitizer, bath soap, hand wash, 10 face masks and detergent.
- Safety committee meeting was conducted at all project sites.
- Covid-19 tests were conducted for all workers.
- Mass toolbox talk was conducted for conveying detailed explanation about Covid-19 vaccination process and emergency evacuation process.

CANVAS & COVE



Induction Training For New Labour



Fogging & Insecticide



Mass TBT

CORPORATE SOCIAL RESPONSIBILITY



Safety Oath Taking



Hard Barricade D Block



Safety Park

ATMOS & AURA



Kick Off Meeting



Tool Box Talk



Induction Meeting



PEP Talk

CORPORATE SOCIAL RESPONSIBILITY

63° EAST



Second Dose Vaccination Drive



Second Dose Vaccination For Workers



Edge Protection



RCCB & Earth Bit Checking



Safety Kits Issued For Workers



Training



Grocery Items Issued To Workers



Committee Meeting

CORPORATE SOCIAL RESPONSIBILITY

EARTH & ESSENCE



Inspection of Power Tool



Training



High Work Safety



CORPORATE SOCIAL RESPONSIBILITY

LEAVES & LIVES



Training



Vaccination Drive



Edge Protection

CORPORATE SOCIAL RESPONSIBILITY

MARQ 2.0



Covid-19 Vaccination Drive



Ration Distribution



Safety Toolbox Talk

MARKETING

DIGITAL ADS

Assetz **atmos & aura**

You deserve to plot your life the way you want.

Luxury Villa Plots 996 - 2890 Sqft | 54 L Onwards | Off Intl. Airport Road (Before Devanahalli Toll Plaza)

Assetz **atmos & aura**

A Dream Asset. A Financial Asset. A Sustainable Asset.

Luxury Villa Plots 996 - 2890 Sqft | 54 L Onwards | Off Intl. Airport Road (Before Devanahalli Toll Plaza)

Assetz **EARTH & ESSENCE**

Move into your dream home in **three months!**

LIMITED UNITS LEFT

₹2.6 Cr

₹2.5 Cr

3 BHK LUXURY ROW HOUSES

10 minutes from Hebbal Flyover (SAMMY'S DREAMLAND)

Assetz

#AnEvergreenAsset

Great Investment. Greater Returns.

atmos & aura LUXURY VILLA PLOTS

1200 - 2900 Sqft | ₹62.5 L OFFER PRICE | ₹61 L Onwards

Off Intl. Airport Road Before Devanahalli Toll Plaza

INSHORTS

Assetz

PAY JUST ₹3.15 L TO BOOK A HOME AND NOTHING ELSE FOR 3 YEARS

canvas ₹63 L

Off Hour Main Road (BEFORE DEVANAHALLI TOLL PLAZA)

2 & 3 BHK LUXURY APARTMENTS

₹63 L Onwards

AVAIL THE OFFER

Assetz

Lakeside luxury that promises vibrant views, every day.

canvas ₹63 L

Off Hour Main Road (BEFORE DEVANAHALLI TOLL PLAZA)

2 & 3 BHK LUXURY APARTMENTS

ENQUIRE NOW

Assetz

Serenity. Luxury. Convenience.

atmos & aura LUXURY VILLA PLOTS

₹2.5 LAKH | ₹61 LAKH Onwards

OFF INTL. AIRPORT ROAD (BEFORE DEVANAHALLI TOLL PLAZA)

BOOK NOW

Assetz

Serenity. Luxury. Convenience.

atmos & aura LUXURY VILLA PLOTS

₹2.5 LAKH | ₹61 LAKH Onwards

OFF INTL. AIRPORT ROAD (BEFORE DEVANAHALLI TOLL PLAZA)

BOOK NOW

HOARDING

The grass is always greener on our side of town.

marq 2.0

PHASE 1 (SOLD OUT) | PHASE 2 (SOLD OUT)

Assetz

3 & 4 BHK Ultra-modern apartments | ₹1.06 CR Onwards

WHITEFIELD - HOSKOTE ROAD

80% open space • 6 acres of parks

81399 97700 | assetzproperty.com

marq 2.0

6 acres of parks | 80% open space | Lush green landscape

Come home to nature, where you never miss a moment of serenity.

3 & 4 BHK Ultra-modern apartments

JUST 4 KM from proposed metro station

81399 97700 | assetzproperty.com

marq 2.0

22-acre township • 6 acres of parks • in-campus school • 25+ amenities

3 & 4 BHK Ultra-modern apartments | ₹1.06 CR Onwards

PHASE 1 (SOLD OUT) | PHASE 2 (SOLD OUT)

Welcome to a home with its own horizon.

81399 97700 | assetzproperty.com

marq 2.0

Leisure and luxury, revel in the best of both.

PHASE 1 (SOLD OUT) | PHASE 2 (SOLD OUT)

22-acre township • 3 & 4 BHK premium apartments • 6 acres of parks • 38,000 sqft clubhouse • 80% open space

WHITEFIELD - HOSKOTE ROAD

81399 97700 | assetzproperty.com

MARKETING

marq 2.0 Assetz

PRE-EMI HOLIDAY SCHEME + FLEXI-PAYMENT PLAN AVAILABLE

3 & 4 BHK Ultra-modern apartments | **₹ 1.06 CR** Onwards

WHITEFIELD - HOSKOTE ROAD (4 KM from proposed metro station)

81399 97700 | assetzproperty.com

PRM/KAR/RE/A/125/1/309/PR/210416/004127 | T&C Apply

marq 2.0 Assetz

Find us at the heart of it all.

3 & 4 BHK Ultra-modern apartments | **Whitefield - Hoskote Road**

ITPL 10 mins | Metro Station 11 mins | KR Puram 12 mins

Phoenix Marketcity 20 mins | Indiranagar 23 mins

81399 97700 | assetzproperty.com

CGI Artist's Impression | T&C Apply

marq 2.0 Assetz

The Park isn't the only green thing you'll find here.

3 & 4 BHK Ultra-modern apartments | **WHITEFIELD - HOSKOTE ROAD** (4 KM from proposed metro station)

77% water saved and recycled | 85% green open spaces | Organic waste recycling | Energy efficient lights & fixtures

PHASE 1 (2024) | PHASE 2 (2025)

81399 97700 | assetzproperty.com

PRM/KAR/RE/A/125/1/309/PR/210416/004127 | T&C Apply

marq 2.0 Assetz

3 & 4 BHK Ultra-modern apartments

38,000 SQFT Ready Clubhouse

₹ 1.06 CR Onwards

WHITEFIELD - HOSKOTE ROAD

AVAIL LIMITED PERIOD OFFERS AND PAYMENT PLANS!

81399 97700 | assetzproperty.com

CGI Artist's Impression | T&C Apply

marq 2.0 Assetz

3 & 4 BHK Ultra-modern apartments

₹ 1.06 CR Onwards

Big ambitions need more room to grow.
So, we built an entire school in our township.

22 acre township • Fully functional in-campus school • Ready clubhouse

81399 97700 | assetzproperty.com

PRM/KAR/RE/A/125/1/309/PR/210416/004127 | T&C Apply | CGI Artist's Impression

marq 2.0 Assetz

A world built for you, around you.

22-acre township • 6 acres of parks • 80% open space • 38,000 sqft clubhouse

3 & 4 BHK | ₹ 1.06 Cr Onwards

81399 97700 | assetzproperty.com

PRM/KAR/RE/A/125/1/309/PR/210416/004127 | T&C Apply

Hoarding 50 x 50

Assetz RERA NO: PRM/KAR/RE/A/125/1/309/PR/210416/004127

Introducing **atmos & aura**

LUXURY VILLA PLOTS | 1200 - 2900 Sqft

LIMITED PERIOD OFFER

₹62.5L NOW ₹61L ONWARDS

15 MINUTES FROM HERE BEFORE TOLL PLAZA

8152 99 77 00 | assetzproperty.com | rera.karnataka.gov.in | CGI Artist's Impression | CREDAT

Hoarding 50 x 50

Assetz RERA NO: PRM/KAR/RE/A/125/1/309/PR/210416/004127

serene. well-connected. where you'll want to be.

INTRODUCING **atmos & aura**

LUXURY VILLA PLOTS | 1200 - 2900 Sqft

LIMITED PERIOD OFFER

₹62.5L NOW ₹61L ONWARDS

Off Intl. Airport Road (Before Devanahalli Toll Plaza)

8152 99 77 00 | assetzproperty.com | rera.karnataka.gov.in | CGI Artist's Impression | CREDAT

MARKETING

Assetz
ಅಸ್ಸೆಟ್ಸ್

A world built for you, around you.

22-acre township - 6 acres of parks - 80% open space - 38,000 sqft clubhouse

marq^{2.0}
3 BHK | ₹99 Lakh Onwards

81399 97700 | www.assetzproperty.com | PAN/KARERA/1251/466/PK/201001/00326

This project is financed by Altico Capital India Limited*
*This project is not registered with the Reserve Bank of India.

ALTICO
FINANCING YOUR DREAMS

70ft (w) X 30ft (h)

Assetz
ಅಸ್ಸೆಟ್ಸ್

SUN & SANCTUM

LIVE IN THE HEART OF IT ALL.

BOOK NOW & SAVE UP TO
₹ 11 LAKH

LIMITED PERIOD OFFER

2 & 3 BHK | ₹89 LAKH ONWARDS

OFF KR PURAM

8152 99 77 00 | assetzproperty.com

Assetz
ಅಸ್ಸೆಟ್ಸ್

2 & 3 BHK | ₹89 LAKH ONWARDS

LIMITED PERIOD OFFER

BOOK NOW & SAVE UP TO
₹ 11 LAKH

SUN & SANCTUM | **KR PURAM**

INDIRANAGAR | ITPL

81529 97700 | assetzproperty.com

Assetz
ಅಸ್ಸೆಟ್ಸ್

canvas & COVE

2 & 3 BHK LAKESIDE APARTMENTS

₹ 66 LAKH ONWARDS

OFF HOSUR MAIN ROAD

20 MINUTES FROM KORAMANGALA

81529 97700 | assetzproperty.com

Assetz
ಅಸ್ಸೆಟ್ಸ್

A world built for you, around you.

22-acre township - 6 acres of parks - 80% open space - 38,000 sqft clubhouse

marq^{2.0}
3 & 4 BHK | ₹ 1.06 Cr Onwards

81399 97700 | assetzproperty.com | PAN/KARERA/1251/466/PK/201001/00326

This project is financed by Altico Capital India Limited*
*This project is not registered with the Reserve Bank of India.

ALTICO
FINANCING YOUR DREAMS

Assetz
ಅಸ್ಸೆಟ್ಸ್

Introducing **canvas & COVE**

2 & 3 BHK LAKESIDE APARTMENTS

Starting at **₹ 66 Lakh** Onwards

Assetz
ಅಸ್ಸೆಟ್ಸ್

Introducing **canvas & COVE**

2 & 3 BHK LAKESIDE APARTMENTS

Starting at **₹ 66 Lakh** Onwards

REVEL IN 15+ WORLD-CLASS AMENITIES.

Assetz
ಅಸ್ಸೆಟ್ಸ್

Introducing **canvas & COVE**

2 & 3 BHK LAKESIDE APARTMENTS

Starting at **₹ 66 Lakh** Onwards

LUXURY APARTMENTS OVERLOOKING A 137-ACRE LAKE.

MARKETING

MOBILE VAN ADS



An address worth owning.

atmos & aura
Off Intl. Airport Road
(BEFORE DEVANAHALLI TOLL PLAZA)

EASY DOWN PAYMENT SCHEME + NO PRE-EMI FOR 12 MONTHS

996 - 2890 SQFT | **₹ 56 L Onwards**
LUXURY PLOTTED DEVELOPMENT

FOR A SITE VISIT, CALL 7026880099
PRM/KA/RERA/1251/309/PR/210416/004127 | enquiries@assetzproperty.com | T&C apply

63° EAST

2 TOWERS SOLD OUT | TOWER-3 SELLING FAST

A 26-acre township that has it all.


2 & 3 BHK ECO-LUXURY APARTMENTS

OFF SARJAPUR ROAD

12 MINUTES FROM WIPRO SEZ

LIMITED PERIOD OFFER
~~₹ 80 L~~
NOW ₹ 79 L ONWARDS

BOOK A SITE VISIT NOW | **7026880099**
enquires@assetzproperty.com



₹ 56 L Onwards | LUXURY PLOTTED DEVELOPMENT

Off Intl. Airport Road
(BEFORE DEVANAHALLI TOLL PLAZA)

7026880099

EASY DOWN PAYMENT SCHEME + NO PRE-EMI FOR 12 MONTHS

LIMITED PERIOD OFFER

- FLEXI-PAYMENT PLAN
- NO PRE-EMI FOR UPTO 36 MONTHS
- EASY DOWN PAYMENT SCHEME
- BEST PRICE GUARANTEE

7026880099 | enquiries@assetzproperty.com

₹ 56 L Onwards
LUXURY PLOTTED DEVELOPMENT

Off Intl. Airport Road
(BEFORE DEVANAHALLI TOLL PLAZA)

7026880099 | enquiries@assetzproperty.com
T&C apply

EASY DOWN PAYMENT SCHEME + NO PRE-EMI FOR 12 MONTHS



63° EAST

2 & 3 BHK ECO-LUXURY APARTMENTS

OFF SARJAPUR ROAD

LIMITED PERIOD OFFER | ~~₹ 80 L~~ | **NOW ₹ 79 L ONWARDS**

BOOK A SITE VISIT NOW | **7026880099**
PRM/KA/RERA/1251/309/PR/210416/004127 | T&C apply

NEWSPAPER



You know what else is better than our beautiful plots?

Our Location



EARTH & ESSENCE

12 MINUTES FROM HEBBAL FLYOVER

A premium plotted development in the most sought-after community. Planned designed limited address style row houses.

2400 - 4800 SQFT

~~₹ 1.62 Cr~~ | **NOW ₹ 1.58 Cr ONWARDS**

LUXURY VILLA PLOTS

ATMOS & AURA

BEFORE DEVANAHALLI TOLL PLAZA

An urban oasis nestled amidst lush greens that links you back to nature and everything else.

1200 - 2900 SQFT

~~₹ 62.5 L~~ | **NOW ₹ 61 L ONWARDS**

LIMITED PERIOD OFFER | Best Price Guarantee | No Pre-EMI for 12 Months | Easy Down Payment Scheme | Flexi-Payment Plan

CALL US TODAY TO BOOK A SITE VISIT

9164 11 00 88 | assetzproperty.com | rera.karnataka.gov.in | CCD Artist's Impression | T&C Apply



MARKETING

STANDEES


WEBSITE BANNERS

PRM/KJ/RERA/1251/309/PR/210416/004127

Assetz

They didn't miss this. Neither should you.

LUXURY PLOTTED DEVELOPMENTS BEFORE AIRPORT TOLL PLAZA



atmos & aura

Before Devanahalli Toll Plaza

1200 - 2900 SQFT PLOTS ₹ 61 L ONWARDS

Pay just ₹ 3 LAKH AND OWN A PLOT



EARTH & ESSENCE

10 minutes from Hebbal Flyover

2400 - 4800 SQFT PLOTS ₹ 1.58 Cr ONWARDS

Pay just ₹ 8 LAKH AND OWN A PLOT

200+ PLOTS SOLD IN A MONTH

CALL 9164110088 | assetzproperty.com | rera.gov.karnataka.in | CREDAI

PRM/KJ/RERA/1251/309/PR/210416/004127

Assetz

Wished for a toll-free life? Consider it done.

OFF INTL. AIRPORT ROAD (Before Devanahalli Toll Plaza)

Introducing **atmos & aura**

1200 - 2900 SQFT LUXURY VILLA PLOTS

₹ 61 LAKH ONWARDS

LIMITED PERIOD OFFER


PAY JUST **₹ 3 LAKH** AND OWN A PLOT

NO PROCEED FOR 18 MONTHS | FLEXIBLE PAYMENT PLAN | BEST PRICE GUARANTEE

HANDOVER IN 7 MONTHS*

BOOK A SITE VISIT NOW 9164 11 00 88 | assetzproperty.com | rera.karnataka.gov.in

Assetz






THE BIG FESTIVE FIESTA

MOST AWAITED OFFERS OF THE YEAR!

PAY JUST 5%

TO BOOK A LUXURY PROPERTY

-  SPOT BANK APPROVAL
-  BEST PRICE GUARANTEE
-  EASY DOWN PAYMENT SCHEME

assetzproperty.com T&C Apply

Disclaimer: Offers may vary project wise



A fuller life in the burgeoning North.

Introducing **atmos & aura**

LUXURY VILLA PLOTS 1200 - 2900 sqft

₹ 62.5 L NOW ₹ 61 L ONWARDS

Off Intl. Airport Road (Before Devanahalli Toll Plaza)

Introducing **atmos & aura**

Luxury plotted development inspired by the ancient Japanese concept...

IKIGAI

Find your purpose here.

Off Intl. Airport Road (Before Devanahalli Toll Plaza)

Introducing **atmos & aura**

Luxury plotted development inspired by the ancient Japanese concept...

IKIGAI

Find your purpose here.

Off Intl. Airport Road (Before Devanahalli Toll Plaza)

A fuller life in the burgeoning North.

Introducing **atmos & aura**

LUXURY VILLA PLOTS 1200 - 2900 Sqft

₹ 62.5 L NOW ₹ 61 L ONWARDS

Off Intl. Airport Road (Before Devanahalli Toll Plaza)

COMMUNITY CIRCLE

STANDEES

Assetz COMMUNITY CIRCLE

INTRODUCING

Luxy Villa Plotted Development

- Acres of Green + Open Spaces
- World-Class Clubhouse
- Premium Neighbourhood
- Sustainable Measures

atmos & aura ₹62.5 L

Before Devanahalli Toll Plaza | REFER AND EARN UPTO ₹2.40 LAKH

EARTH & ESSENCE ₹1.62 Cr

10 minutes from Hebbal Flyover | REFER AND EARN UPTO ₹5 LAKH

LIMITED PERIOD OFFER

TO SUBMIT REFERRAL DETAILS
 95137 78401 | enquiries@assetzproperty.com

Disclaimer: Rewards in the form of vouchers, gifts cards & more. T&C Apply

EMAILERS

Connect

HELP US FIND BRAND AMBASSADORS.

Introducing the Connect programme, exclusively created for Assetz priority members. Your chance to help your family friend increase their monthly earnings by registering them on the Connect programme. You can earn by registering and get rewarded every time they complete a sale with us.

HOW DOES IT WORK?

- Refer a friend to be part of the Connect programme and stand a chance to take home Amazon vouchers worth ₹20,000/-

CLICK HERE TO REGISTER AN INFLUENCER

Refer a friend to be part of the Connect programme and stand a chance to take home Amazon vouchers worth ₹20,000/-

CLICK TO REFER OR SEND YOUR DETAILS TO 9620418504

What is Community Circle? REFER AN ASSETZ HOME AND EARN 2% OF THE HOME VALUE

BOSCH

Get drenched. Get dried. It's that easy!

Refer a friend to be part of the Connect programme and stand a chance to take home Amazon vouchers worth ₹20,000/-

CLICK TO REFER OR SEND YOUR DETAILS TO 9620418504

What is Community Circle? REFER AN ASSETZ HOME AND EARN 2% OF THE HOME VALUE

Some like their outdoors inside.

GREEN SPACES IN EACH HOME

Refer a friend to be part of the Connect programme and stand a chance to take home Amazon vouchers worth ₹20,000/-

CLICK TO REFER OR SEND YOUR DETAILS TO 9620418504

What is Community Circle? REFER AN ASSETZ HOME AND EARN 2% OF THE HOME VALUE

Everything and more within an arm's reach.

Refer a friend to be part of the Connect programme and stand a chance to take home Amazon vouchers worth ₹20,000/-

CLICK TO REFER OR SEND YOUR DETAILS TO 9620418504

What is Community Circle? REFER AN ASSETZ HOME AND EARN 2% OF THE HOME VALUE

FUJIFILM

Refer a friend to be part of the Connect programme and stand a chance to take home Amazon vouchers worth ₹20,000/-

CLICK TO REFER OR SEND YOUR DETAILS TO 9620418504

What is Community Circle? REFER AN ASSETZ HOME AND EARN 2% OF THE HOME VALUE

HAVELLS

Expert solutions for all your lighting needs!

Refer a friend to be part of the Connect programme and stand a chance to take home Amazon vouchers worth ₹20,000/-

CLICK TO REFER OR SEND YOUR DETAILS TO 9620418504

What is Community Circle? REFER AN ASSETZ HOME AND EARN 2% OF THE HOME VALUE

THE BEST OF NORTH BENGALURU!

Refer a friend to be part of the Connect programme and stand a chance to take home Amazon vouchers worth ₹20,000/-

CLICK TO REFER OR SEND YOUR DETAILS TO 9620418504

What is Community Circle? REFER AN ASSETZ HOME AND EARN 2% OF THE HOME VALUE

Add a touch of sophistication & create your perfect luxury.

Refer a friend to be part of the Connect programme and stand a chance to take home Amazon vouchers worth ₹20,000/-

CLICK TO REFER OR SEND YOUR DETAILS TO 9620418504

What is Community Circle? REFER AN ASSETZ HOME AND EARN 2% OF THE HOME VALUE

Unique handcrafted home décor & more!

Refer a friend to be part of the Connect programme and stand a chance to take home Amazon vouchers worth ₹20,000/-

CLICK TO REFER OR SEND YOUR DETAILS TO 9986861001

What is Community Circle? REFER AN ASSETZ HOME AND EARN 2% OF THE HOME VALUE

LOOKING FOR A HOME MAKEOVER?

Refer a friend to be part of the Connect programme and stand a chance to take home Amazon vouchers worth ₹20,000/-

CLICK TO REFER OR SEND YOUR DETAILS TO 9620418504

What is Community Circle? REFER AN ASSETZ HOME AND EARN 2% OF THE HOME VALUE

KAFF

Refer a friend to be part of the Connect programme and stand a chance to take home Amazon vouchers worth ₹20,000/-

CLICK TO REFER OR SEND YOUR DETAILS TO 9620418504

What is Community Circle? REFER AN ASSETZ HOME AND EARN 2% OF THE HOME VALUE

A special gift & experience curated exclusively for you.

Refer a friend to be part of the Connect programme and stand a chance to take home Amazon vouchers worth ₹20,000/-

CLICK TO REFER OR SEND YOUR DETAILS TO 9620418504

What is Community Circle? REFER AN ASSETZ HOME AND EARN 2% OF THE HOME VALUE

Refer

A FRIEND
 FAMILY
 TALENT

Introducing Connect – An Assetz initiative, created exclusively for our privileged customers. Here's a chance for you to help your family friend increase their monthly earnings by simply registering them to our Connect programme as an Influencer. Once they complete their first sale, you get to take home an assured reward – It's a total win-win, you earn & so does your buddy!

Refer a friend to be part of the Connect programme & earn an assured

Amazon voucher worth ₹20,000/-

EMPLOYEE ENGAGEMENT ACTIVITIES

I. ANNIVERSARY CELEBRATION

INTERNAL ACTIVITIES



USHA R
Finance Department



MAHESH BHAUSO YADAV
Finance Department



AMIT CHOPRA
Facility Department



SUNIL R
IT Department



GOPALKRISHNA V
IT Department

EMPLOYEE ENGAGEMENT ACTIVITIES

II. EMPLOYEE ENGAGEMENT

As a part of employee engagement initiative, various webinars related to health and wellness were organized through our insurance broker during last quarter FY Q2 (July - September 2021).

- **StayFit, StayStrong Campaign**
- **Yoga for Mind, Body, and Soul**
- **Fun Fitness Sessions**

On September 16, we successfully conducted a vaccination drive for the 2nd dose in our corporate office for all employees and their friends and families. The event drew a total of 140 employees and their families.

Currently 76% of the employees are fully vaccinated and we should be able to achieve 96% by the end of 2021.



JOINING OUR FOLD

It gives us immense pleasure to welcome the following people who have joined Assetz Property Group between **July'21 - September'21**



Nagaraja PS
Project Engineer

Nagaraja comes with over 7 years of experience in the field of Construction. He holds a Bachelor's degree in Civil Engineering from MS Ramaiah Institute of Technology. Prior to joining us, he was associated with Rubix Infra as Project Engineer.



Sinchana AM
Senior Engineer - QS

Sinchana comes with over 6 years of experience in the field of QS. She holds a Bachelor's degree in Civil Engineering from VTU, Belgaum. Prior to joining us, she was associated with Salarpuria Sattva as Senior Engineer – QS.



Avinash AR
Senior Executive – CRM

Avinash comes with over 3 years of experience in the field of Customer Relations. He holds a Master's degree in Commerce from Mangalore University. Prior to joining us, he was associated with Provident Housing as Executive CRM.



Kaushik Gowda
Executive – EMT

Kaushik comes with over 2 years of experience in the field of Presales. He holds a Bachelor's degree in Computer Science from MS Ramaiah Institute. Prior to joining us, he was associated with Simon Integrated Services as CSR.



Nagaraju NR
Deputy Manager - CRM

Nagaraju comes with over 9 years of experience in the field of Project Management. He holds a Master's degree in Civil Structural Engineering from Vishweshwaraiah University. Prior to joining us, he was associated with Design Tech Solutions as Project Engineer.



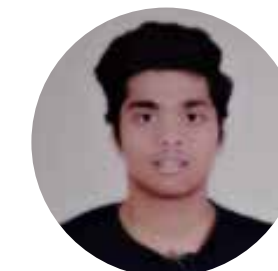
Harish Kumar NR
Project Engineer

Harish comes with over 7 years of experience in the field of Construction. He holds a Bachelor's degree in Civil Engineering from VTU, Belgaum. Prior to joining us, he was associated with Synergy Property Development as Project Engineer.



Aljo CD
Project Engineer

Aljo comes with over 2 years of experience in the field of Construction/Civil Engineering. He holds a Bachelor's degree in Civil Engineering from VTU, Belagavi. Prior to joining us, he was associated with Starworth Infrastructure & Constructions as Junior Engineer – QA/QC.



Sidhartha S
Executive – Guest Relations

Sidhartha comes with over 2 years of experience in the field of Customer service. He holds a Bachelor's degree in Commerce from BES College. Prior to joining us, he was associated with MotherHood Hospital as Executive – Customer Experience.



Sumanth
Executive - ERP & Document Controller

Sumanth comes with over 7 years of experience in the field of Customer Service. Prior to joining us, he was associated with Bharathi Retail as Store Manager.