



CONNECT

OCTOBER - DECEMBER 2021

Dear Team,

2021 has truly been the year of transition, be it adapting to extraordinary circumstances or overcoming the relentless challenges. Regardless of which we have successfully kept the momentum going both at company and at individual levels. Most of you continued to show your commitment and sincerity by doing what you can, either at the workplace, project sites, or from the places where you are, to provide the necessary support as required from an organization's perspective. This unfailing sense of purpose shown by each one of you is commendable and has helped us stay afloat in these trying times.

With the new quarter unfurling, it is important to address the current real estate scenario which is somewhat synonymous with being caught in a whirlwind. However, post the major setback in April-Jun 2021 on account of the second wave, September heralded the auspicious start of the festive season, and we spared no effort in cashing in on this sentiment. To encourage people to buy amid the ongoing vaccination drive, we set forth a host of subvention schemes, discount offers, flexible residential options and negotiable pricing, all of which gave us enough leverage to bet big during these past few months.

As we began the New Year, one thought the obstacles of 2021 would be behind us. Unfortunately, the year started off with an unusual resurgence of Covid cases across the country, and it continues to challenge the way we do our business. In addition to the foreseeable drop in real estate prices, it also brought about moderate constraints that were imposed on the general public's movements. The real estate community has been cautious yet hesitantly optimistic at the same time. Now, with the restrictions alleviated it is crucial for us to overcome the eclipse of its domino effects by combining our efforts, ideas, experiences, opinions, skills and strive towards an impactful last quarter.

Despite the adversities against us, the past quarter has been a fairly good one, courtesy of our constant endeavor to achieve the targets. With the same persuasion, we have aligned two new projects in the flourishing locations of Jakkur and Yeshwanthpur in the coming quarter. Not to forget, the new phase and tower launches in the pipeline for our well-established flagship projects, namely Marq and 63 Degree East. We're leaving absolutely no stone unturned with regards to the marketing and digital efforts necessary to amplify the traction for these launches.

Being a customer-driven company also translates into a high level of market confidence and trust. And we're thankful to all our employees, our partners, investors, and customers for their invaluable support and the trust they've put in us. It truly gives meaning and drives a shared approach to our everyday work.

On that note, let's walk through this new quarter as one and forge the path to a triumphant future. Every one of us has a significant role to play in the days ahead and I'm confident that together we will conquer great achievements.

As we go along, we will overcome this pandemic too.

Be brave, be safe until then.

AKSHAY DEWANI

PROJECT UPDATES

38 & Banyan

- The external painting and landscape works are in progress.
- The entrance reception lounge, clubhouse & softscape works are in progress.
- The handover to the clients has been processed.
- 16 out of 38 flats have been handed over to the CRM.
- The internal units & finishing activities are in progress.
- 6 units are in pipeline for PDI inspection.

STATUTORY COMPLIANCE

- The STP work has been completed.
- The OWC work has been completed.
- The electrical panel has been received and installed.
- The DG has been received and positioned.
- The fire inspection has been completed & fire CC approval has been received.
- The CFO CC approval has been received.



Westside Driveway Finish



Southside Driveway Finish

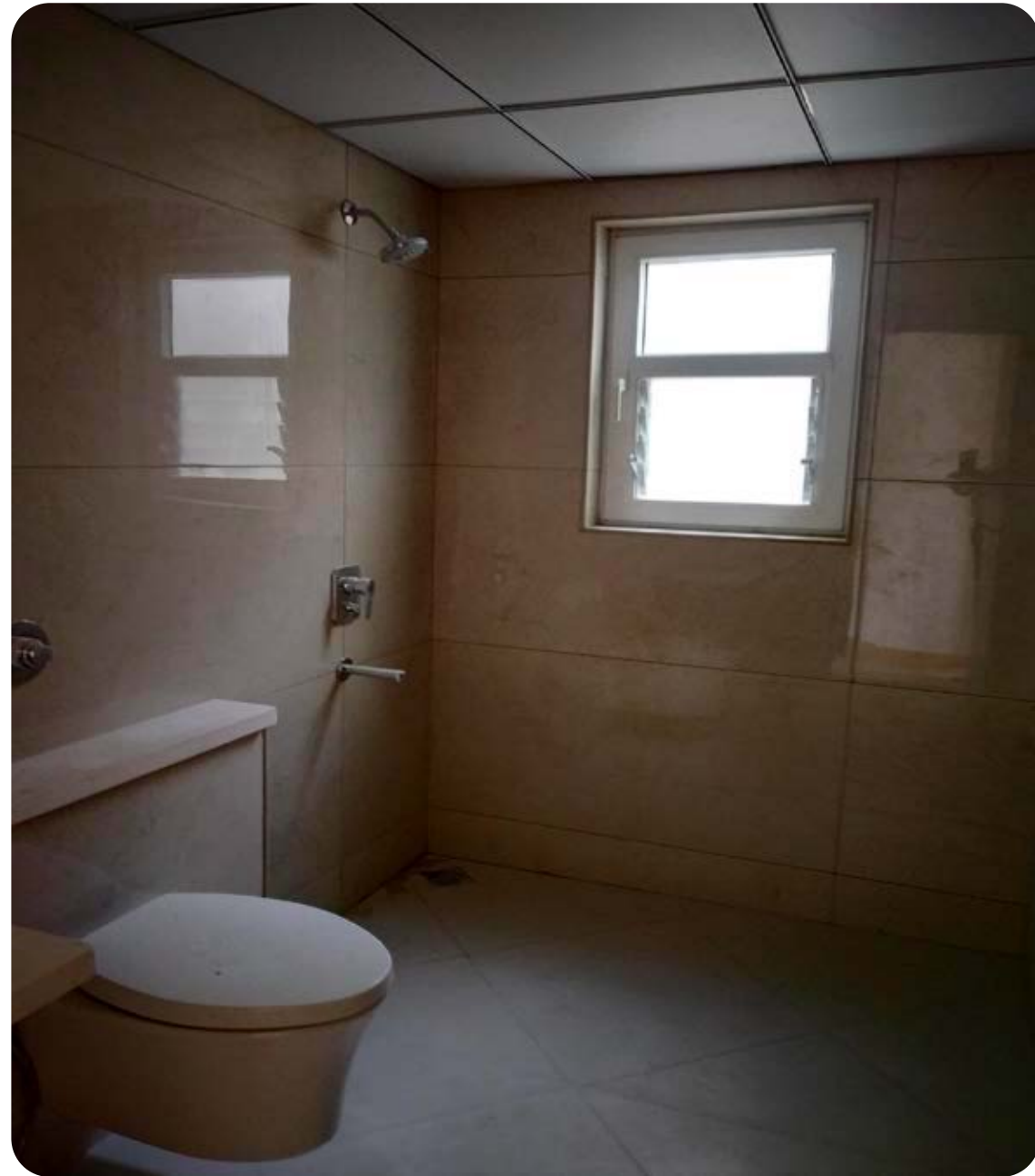


Driveway & Pathway Work



Eastside Driveway





PROJECT UPDATES

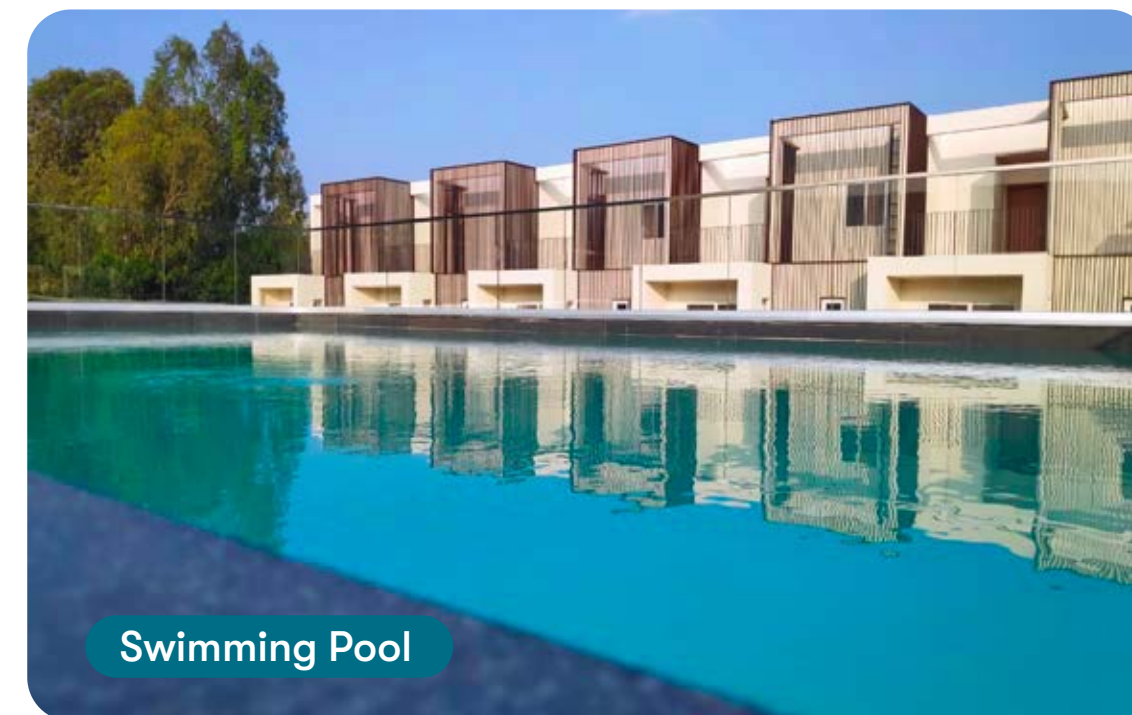
Soul & Soil

PHASE 1A

- The customer occupancy has started.
- All the capital equipment are charged and in function.

PHASE 1B

- The internal finishing works are in progress.
- Block E (1-5) - The window fixtures & UPVC door works have been completed. The wiring & 1st coat painting works are in progress.
- Block H - The window fixtures & UPVC door works have been completed. The PHE shaft work is in progress.
- Block F - The tiling work has been completed and the UPVC fixtures work is in progress.
- Block E (6-10) - The tiling work is in progress.
- Block G - The waterproofing work is in progress.



Swimming Pool



PROJECT UPDATES

Soul & Soil

PHASE 2A

- Block N and Block J (1-7) - The superstructure work has been completed & the waterproofing work is in progress.
- Block K (1-10) - The superstructure work is in progress.
- Block J (8-15), Block M & Block L - The substructure work is in progress.

EWS

- The structure has been completed in EWS & masonry work is in progress.

EXTERNAL

- Phase 1A - The hardscape & landscape works have been completed. The light fixtures installation work is nearing completion.
- Clubhouse - The lift, indoor game area, badminton court, yoga room, steam room & swimming pool works have been completed. The gym room work is in progress.
- Phase 1B - The external service work is in progress & partial external grading work has been done.



Clubhouse - Indoor Badminton Court



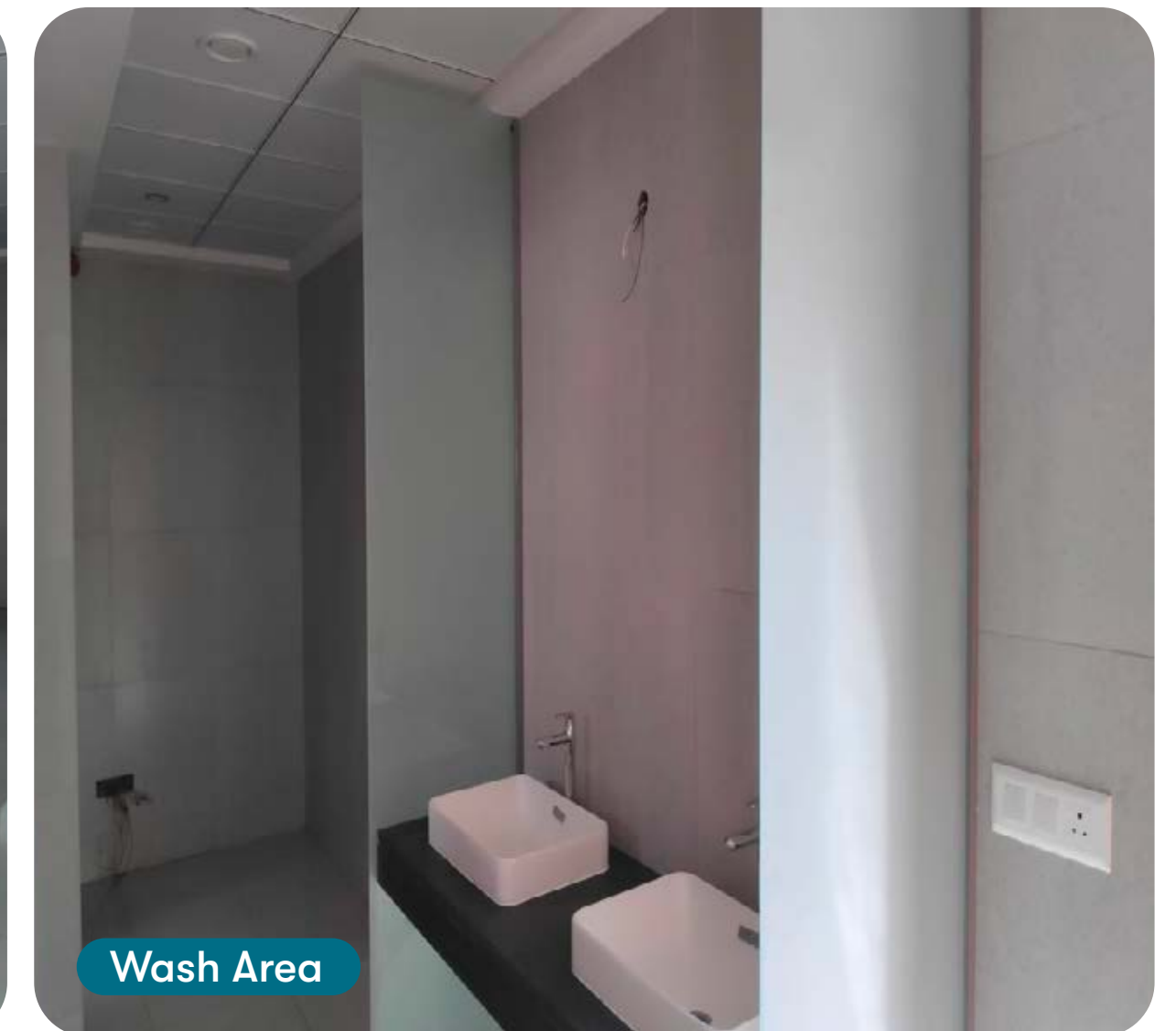
Clubhouse - Yoga Room



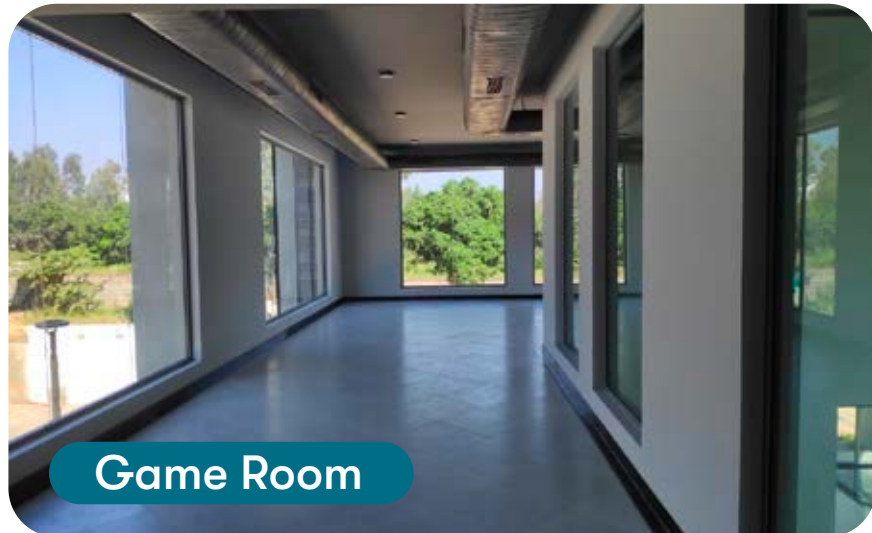
Steam Room



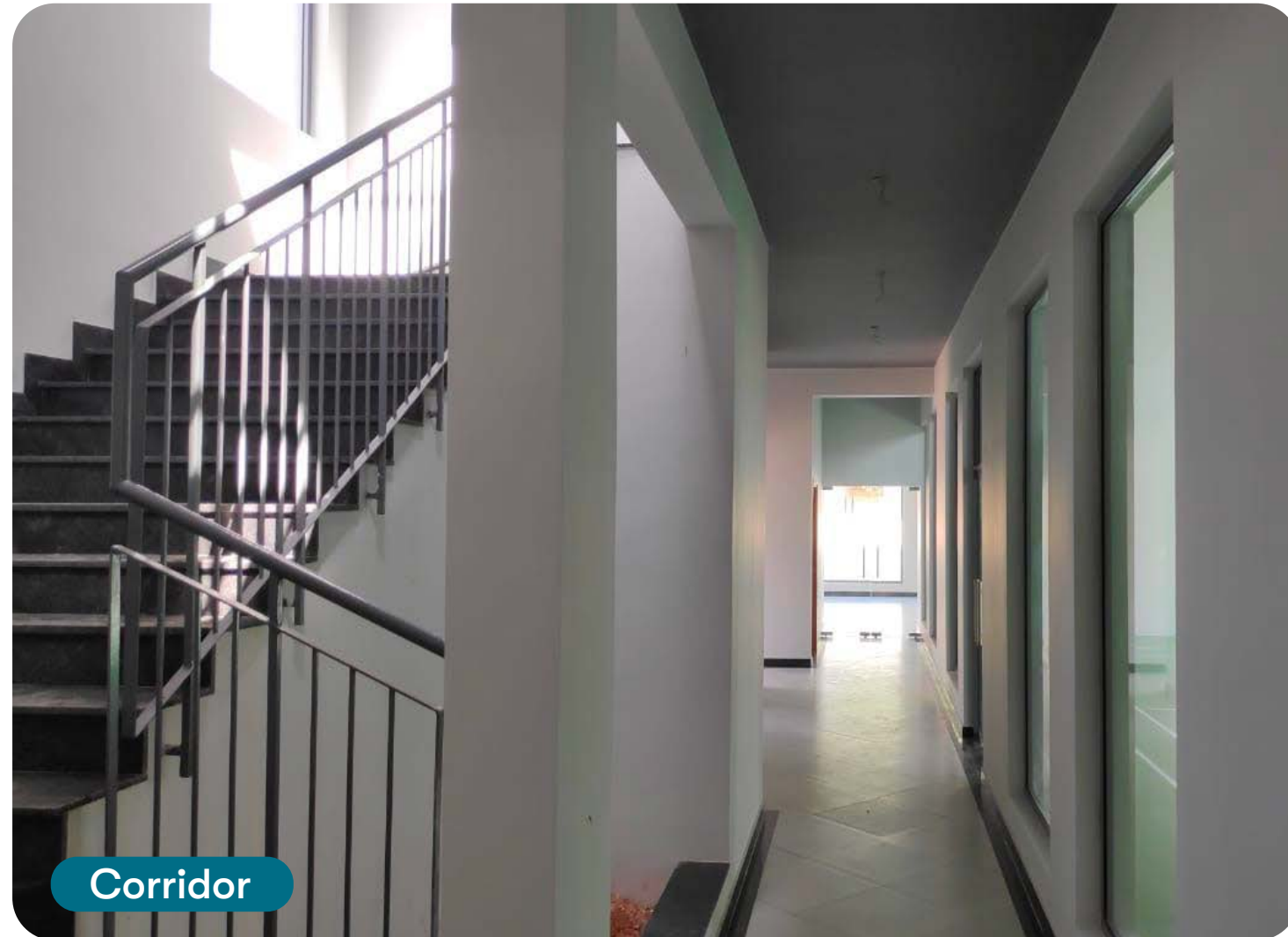
Shower & WC



Wash Area



Game Room



Corridor



Multipurpose Hall



Phase 1A - Landscape



Phase 1A - Community Kitchen



Phase 1A - External Lighting



EWS



Phase 2A - Superstructure Work



Block J (8-15)



Block L



Block M

PROJECT UPDATES

Here & Now

TOWER 1

- The customer inspection process for 51 units has been completed & 26 units have been handed over.
- The customer inspection process for around 123 units is in progress.

TOWER 2

- The customer inspection process for 123 units has been completed.
- The customer inspection process for around 150 units is in progress.
- Around 50 units have been handed over.

CLUBHOUSE

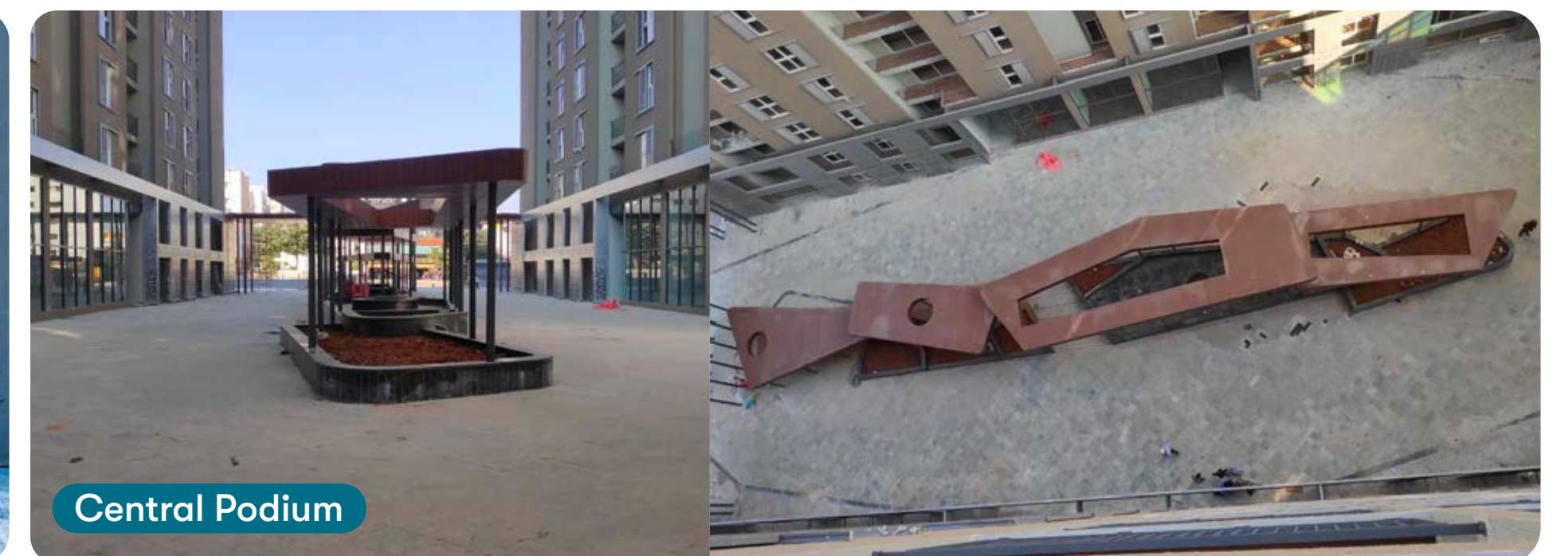
- The glazing, tiling, false ceiling, swimming pool, painting, CP, sanitary, M&E works have been completed.
- The north side aluminum cladding & glazing works have been completed.

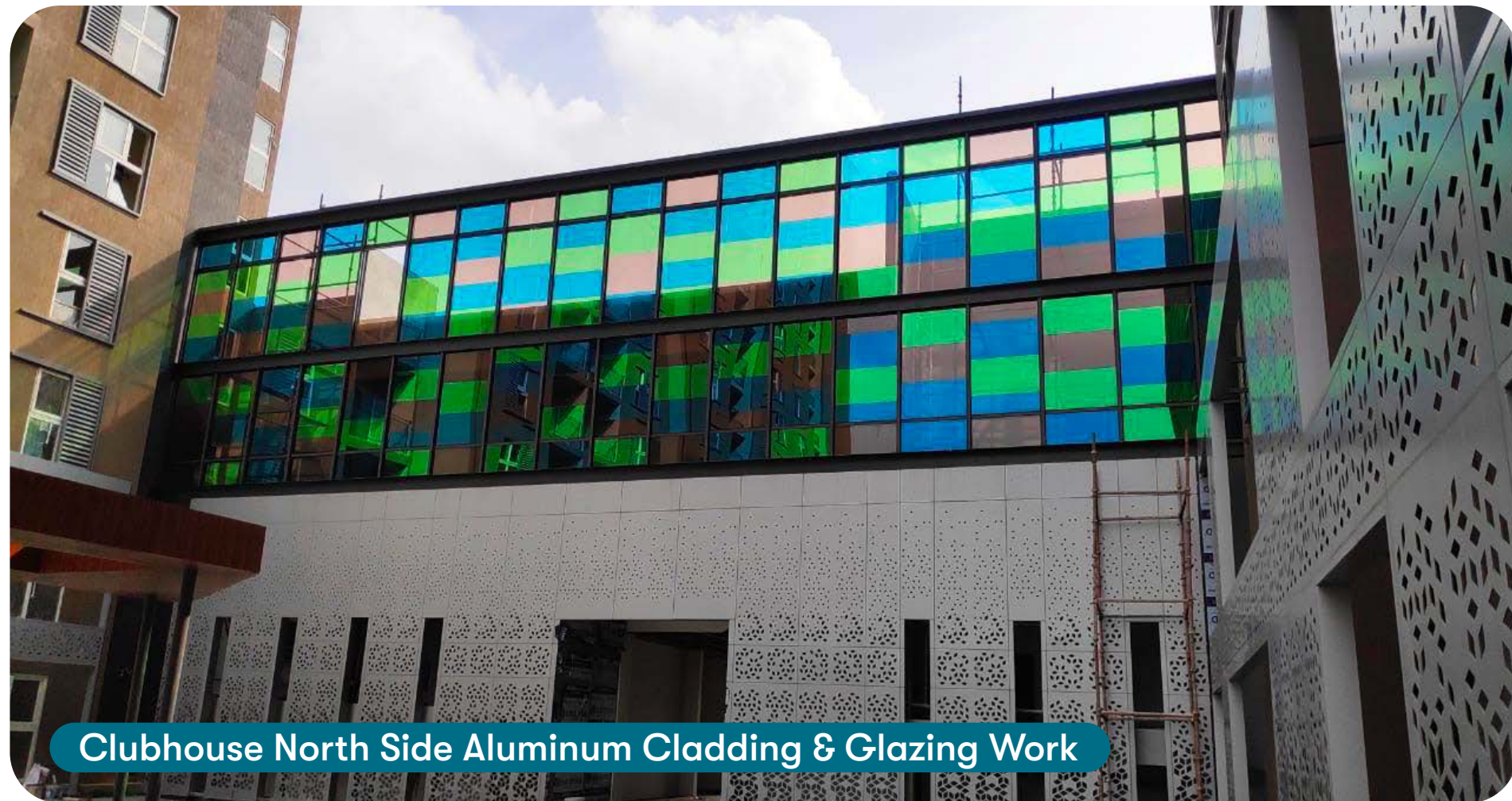
COMMON AREA

- The double-height work for Tower 1 & 2 has been completed.
- The landscape, basement column guard, car park marking & speed breaker fixing works are in progress.

EXTERNAL DEVELOPMENT

- The yoga deck structure & view pavilion roof ACP works have been completed.
- The fire driveway, planter boxes, quadrangle ACP skin wall, entrance porch, security room, waiting pavilion, trellis, BBQ counter MS roof & ACP works have been completed.
- The external area light fixtures installation & sports area development works are in progress.





Clubhouse North Side Aluminum Cladding & Glazing Work



Clubhouse Elevation Glazing Work



Swimming Pool



Clubhouse Toilet - Finishes



Basement Finishing



Central Podium & Entrance Lobby Light Fixtures

PROJECT UPDATES

Marq 2.0

PHASE 2

BUILDING 2 STRUCTURE

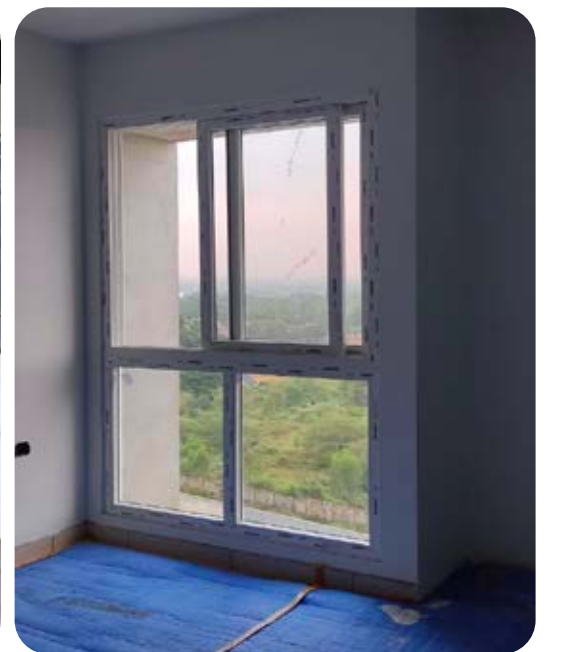
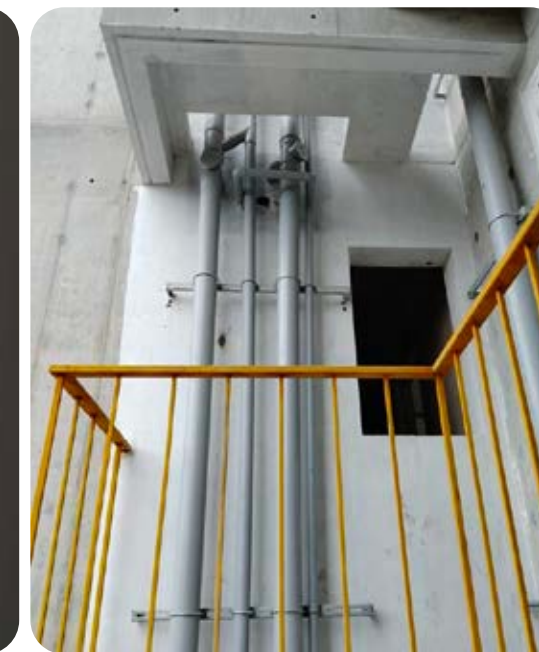
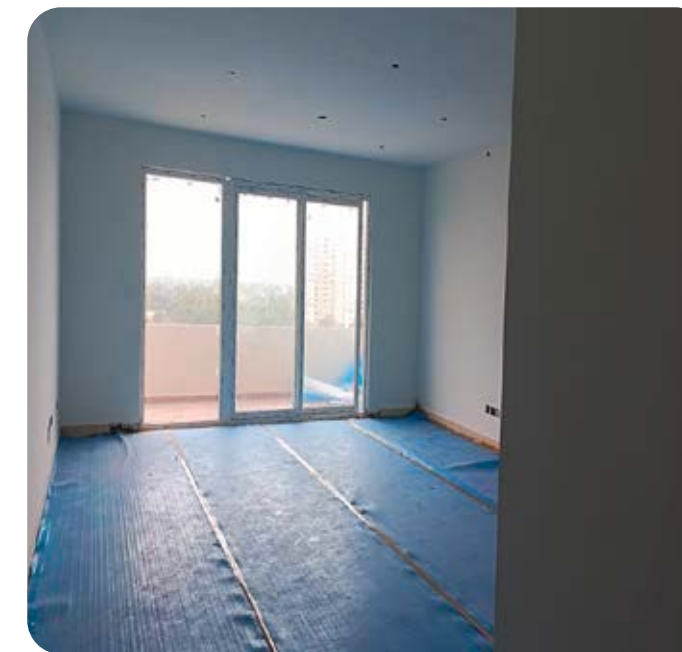
- The structure work has been completed.
- The finishing work is in progress.

BUILDING 2 FINISHES

- The tiling, painting, UPVC & PHE finishing works in 11th to 15th floor are in progress.

BUILDING 3

- M wing - The 7th floor work is in progress.
- L wing - The 8th floor work is in progress.



PROJECT UPDATES

Sun & Sanctum

WING 1

- The 2nd floor slab work is in progress.

WING 2

- The 1st floor column work is in progress.

WING 3

- The 1st floor slab work is in progress.

WING 4 & 5

- The ground floor room & 1st floor column works are in progress.
- The non-tower area work is in progress.



PROJECT UPDATES

22 & Crest

MOCKUP

- The tiling & UPVC 1st coat painting works have been completed.
- The wooden door installation & toilet CP fitting works are in progress.
- The 1st coat painting work has been completed.
- The final coat ceiling painting work has been completed.
- The tile grouting work has been completed.
- The dado & flooring works in all 3 toilets have been completed.

SALES OFFICE

- The tiling, UPVC 1st coat painting & glass door fixing works have been completed.
- The wooden door fixing & toilet CP fitting works are in progress.
- The kids, master & common toilet tiling work has been completed.
- The tile grouting work has been completed.

LOBBY & STAIRCASE

- The lift cladding, lobby flooring, false ceiling & shaft door fixing works have been completed.
- The staircase granite flooring & railing works have been completed.
- The staircase painting work is in progress.



Entrance Pathway

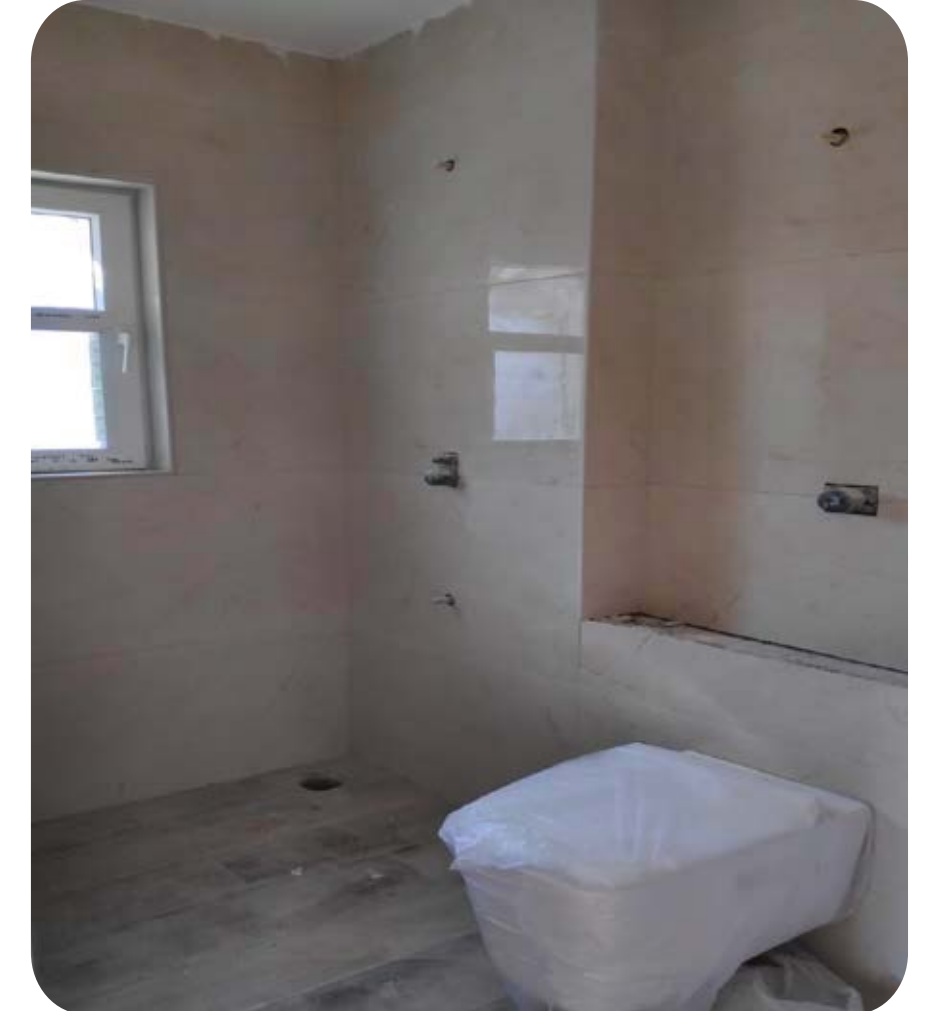


Lift Lobby



1st Coat Painting





PROJECT UPDATES

18 & Oak

- 92% of the main road work has been completed.
- 77% of the PHE work has been completed.
- The crossroad, car park, pathway, electrical & water line works are in progress.

PHASE 2

- The sub-base work for road from plot no. 32A to 35 has been completed.

PHASE 4

- The car park subgrade work from site office to plot 132 has been completed.



Infra Road Work - Phase 2



Infra Road Work - Phase 4



Infra MEP Work



Plumbing & electrical infra works are in progress.

PROJECT UPDATES

Atmos & Aura

PHASE 1 - PLOTTED DEVELOPMENT

- The water supply pipeline work for 5/6 roads has been completed.
- The 1st layer subgrade work for 4 roads & 2nd layer subgrade work for 1 road have been completed.
- The stormwater cover slab casting work for 3 roads is in progress.
- The kerbstone work is in progress.

PHASE 2 - PLOTTED DEVELOPMENT

- The sewage pipeline, water supply pipeline & underground provision for electrical supply works have been completed.
- The 1st layer subgrade & stormwater drain works are in progress.

PHASE 3 - PLOTTED DEVELOPMENT

- The underground provision for electrical supply, stormwater drain, water supply pipeline & sewage pipeline works are in progress.

US SUMP & STP

- The STP PCC work has been completed.
- The UG sump excavation work is in progress.



Mockup Plot



Phase 1



Watering and Compaction



Phase 1 - Road 2nd Layer Subgrade Work



Phase 2 - Kerb Work



Phase 2 - Road 1st Layer Subgrade Work



Phase 3 - Kerb Work



Phase 3 - Road Work



STP - Raft Work To Start

PROJECT UPDATES

63° East

TOWER D

- The podium finishing and external landscape works are in progress.
- 260 units have been cleared for customer handover.
- The modular kitchen, vanity & wardrobe installation work (for 216 units who opted for it) has been completed.

TOWER B

- The structure work is in progress.
- The internal waterproofing, plumbing, tiling and painting works are in progress.
- Tower B1 has reached the 9th floor.
- Tower B2 has reached the 9th floor.
- Tower B3 has reached the 11th floor.

CLUBHOUSE

- The clubhouse work has been completed and all the internal amenities have been handed over to the customers.
- The swimming pool & external landscape works are nearing completion.



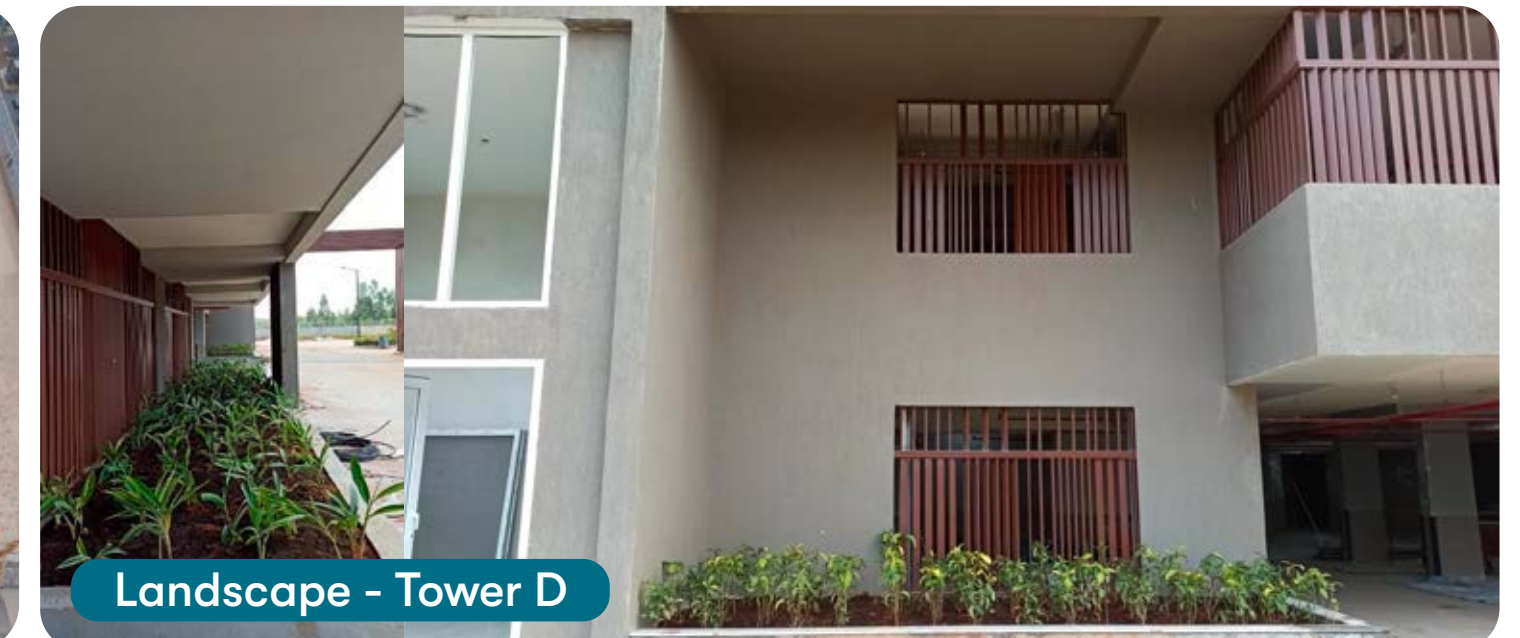
Tower D – Northeast Elevation



Tower D – South Elevation



Kids Play Area - Tower C & D



Landscape - Tower D



Completed Units - Tower D





Tower B - B1, B2 & B3 Block South Elevation



Billiards Table



Multipurpose Hall



Gymnasium



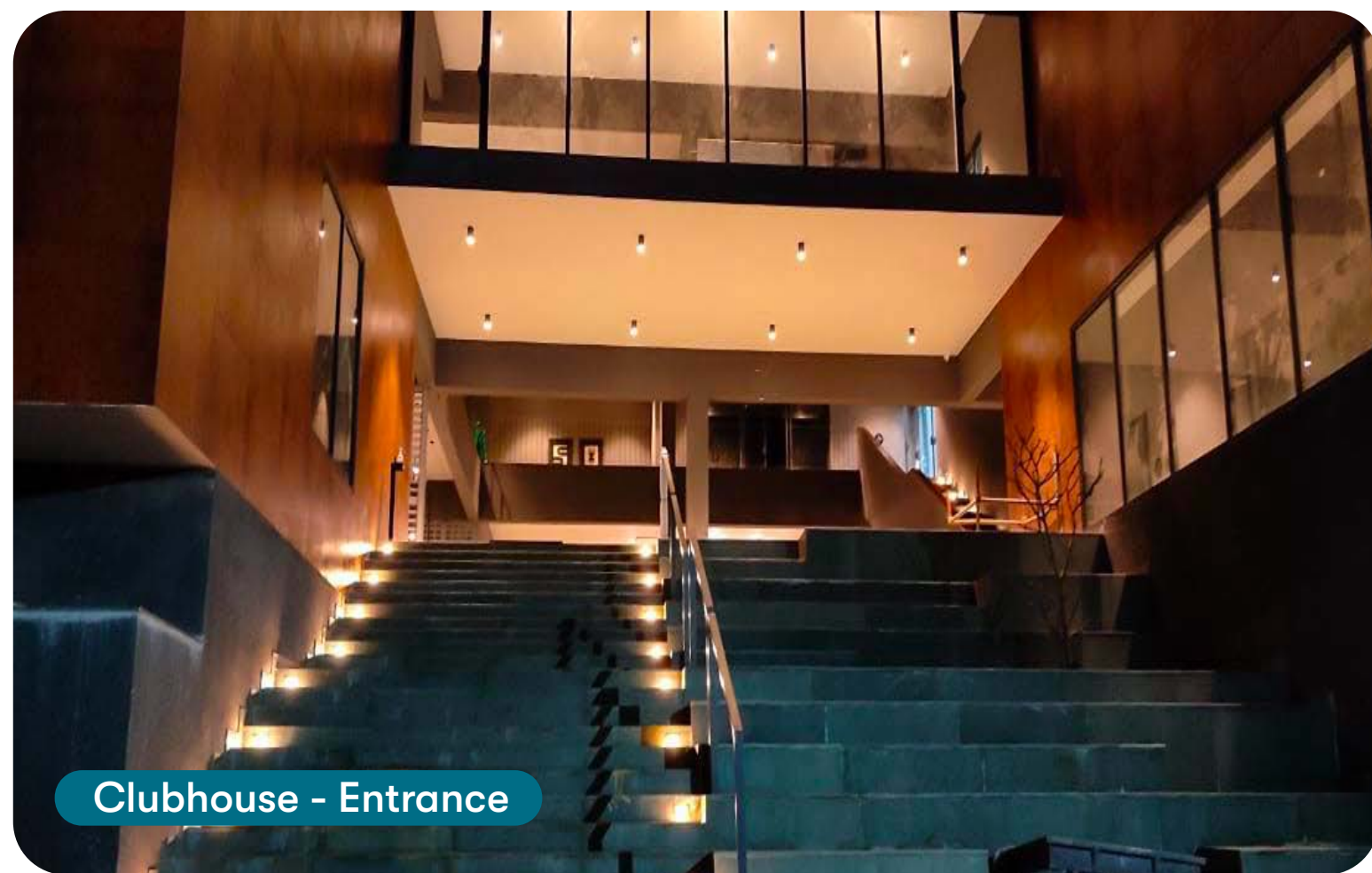
Badminton Court



Table Tennis



Clubhouse - Reception



Clubhouse - Entrance



Reading Lounge



Open to Sky



Bio Pool



Juice Bar

PROJECT UPDATES

Earth & Essence

PHASE 1A

BUILDING 6 (5 BHK - 9 ROW HOUSES)

- The wooden flooring & final coat painting works in all 9 units have been completed.
- The CP and sanitary works in 8 units have been completed.
- The 2nd inspection of all 9 units has been completed.
- The deep cleaning work in 4 units has been completed.

BUILDING 7A (4 BHK – 5 ROW HOUSES)

- The final coat painting work in 4 units has been completed.
- The CP & sanitary works in 3 units have been completed.
- The 1st pre-delivery inspection for 3 units has been completed.

BUILDING 7B (4 BHK – 7 ROW HOUSES)

- The 2nd coat of internal painting work in all 7 units has been completed.
- The wooden flooring work in 6 units has been completed.
- The CP & Sanitary works in 5 units have been completed.
- The 1st PDI for all 7 units & 2nd inspection for 5 units have been completed.



PROJECT UPDATES

Earth & Essence

BUILDING 3 (3 BHK – 12 ROW HOUSES)

- The putty work in 8 units has been completed.
- The tiling work in 10 units has been completed.
- The 1st coat painting work in 5 units has been completed.

BUILDING 5 (3 BHK – 12 ROW HOUSES)

- The plinth beam casting work has been completed.
- The grade slab casting work is in progress.

CLUBHOUSE

- The gym & badminton court flooring work has been completed.
- The swimming pool waterproofing work has been completed.
- The swimming pool tiling, tennis court, half basketball court & pathway works are in progress.

CENTRAL SPINE

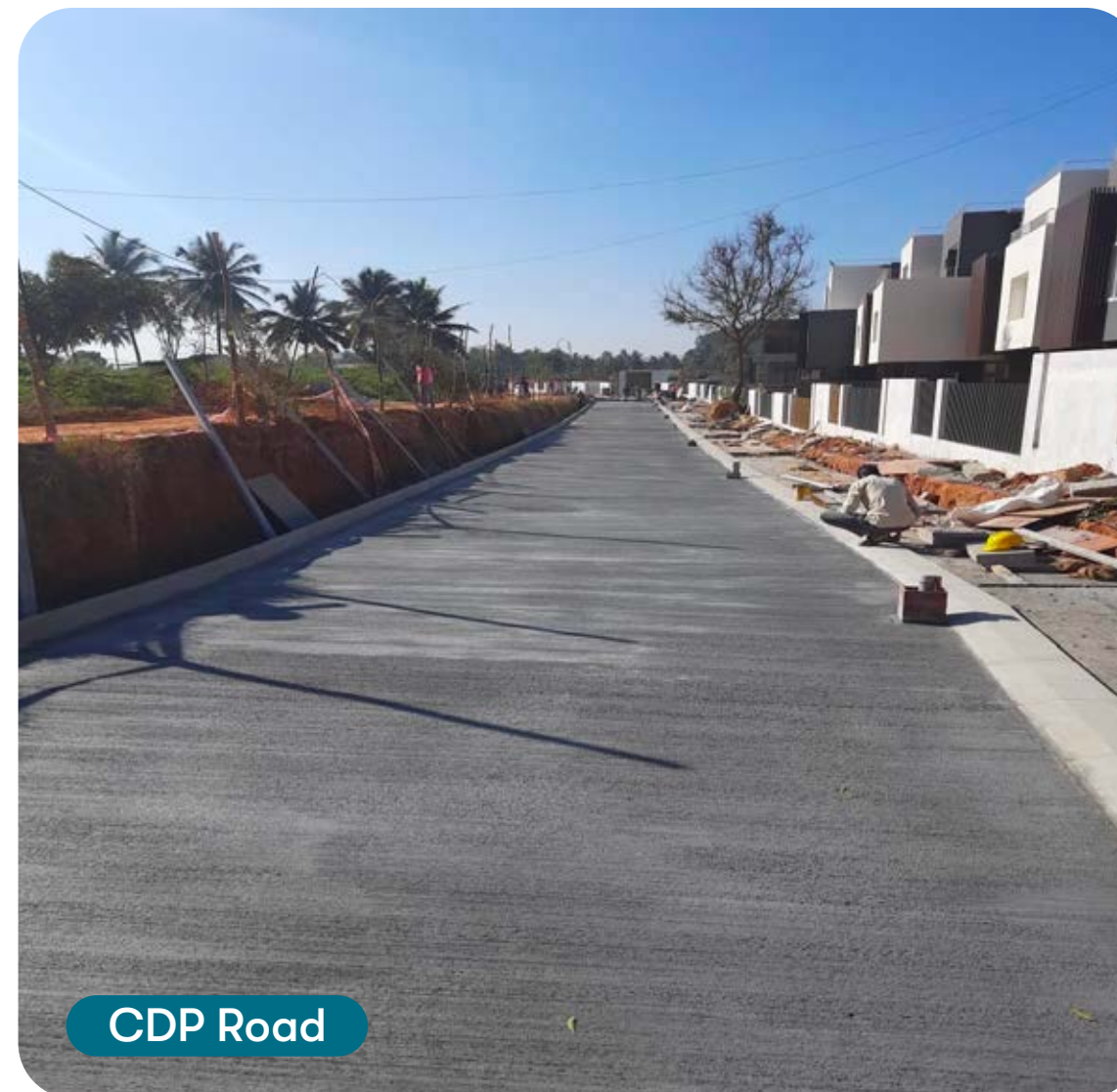
- The softscape work is in progress.



Phase 1A - Building 3



Phase 1A - Building 5



CDP Road



Central Spine Area



PROJECT UPDATES

Earth & Essence

PHASE 1

- The commissioning work of STP & UG sump has been completed.

PHASE 3 **PLOTTED DEVELOPMENT**

- The branch road asphaltting & kerb fixing works have been completed.
- The main road WMM laying work has been completed.
- The branch road paver fixing and boundary stone laying works are in progress.

PHASE 4 **PLOTTED DEVELOPMENT**

- The excavation work is in progress.

PHASE 1B

- The excavation work for Building No. 2 is in progress.

PHASE 2

- The grading work is in progress.



Phase 1 – Water Treatment Plant & STP



Phase 3



Phase 3 - Road





Phase 4



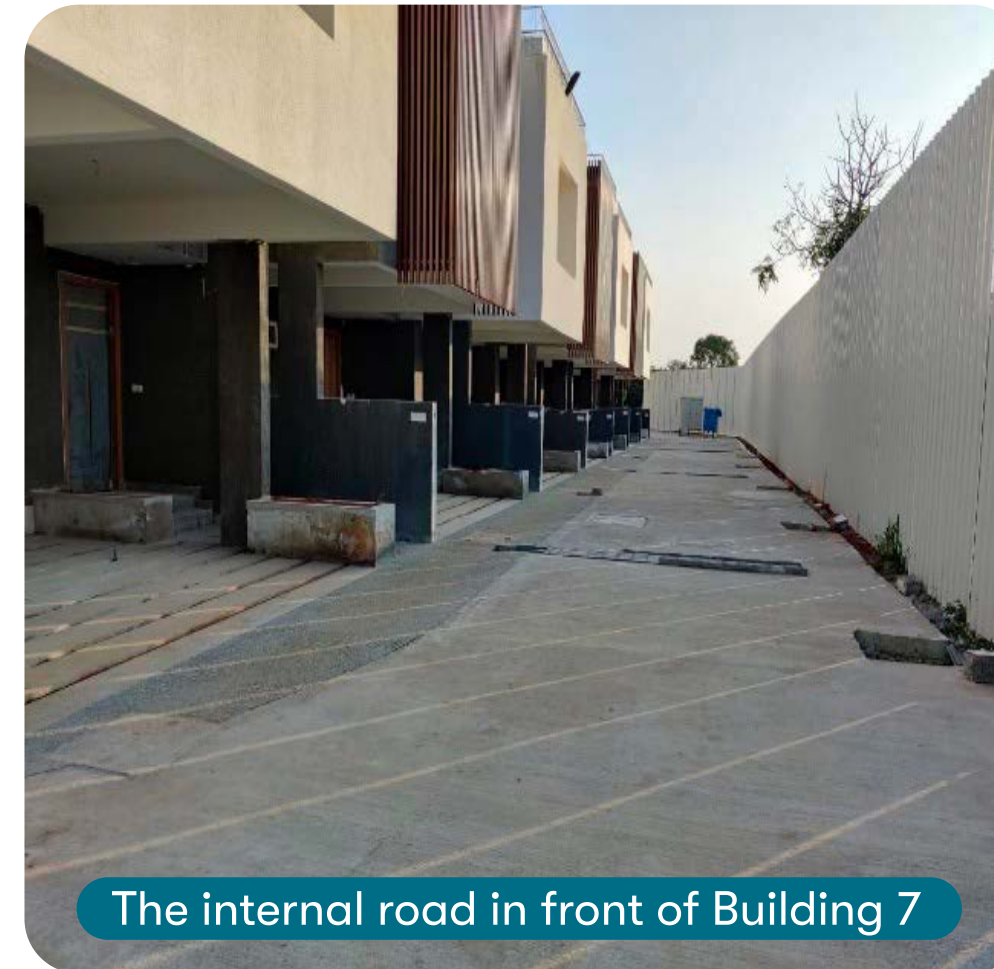
Phase 1B



Phase 2



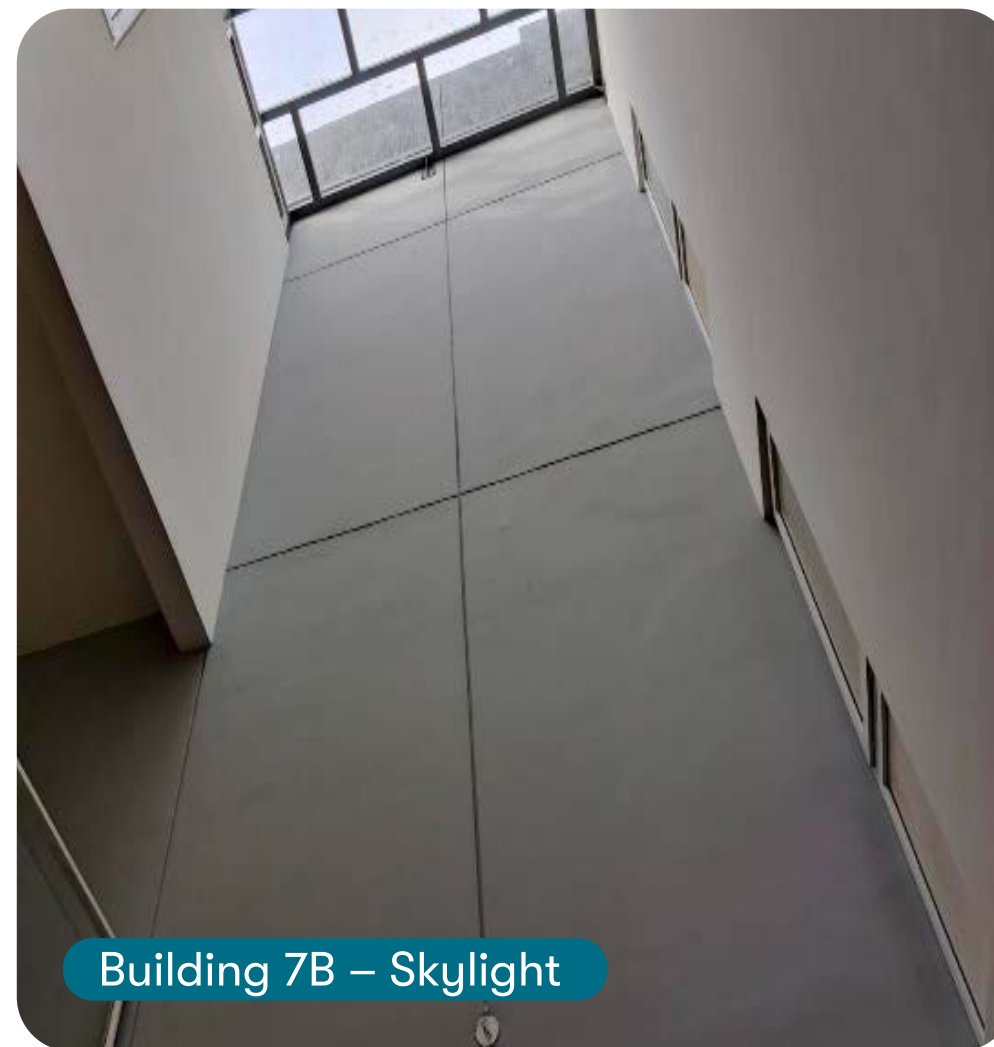
The internal road in front of Building 6



The internal road in front of Building 7



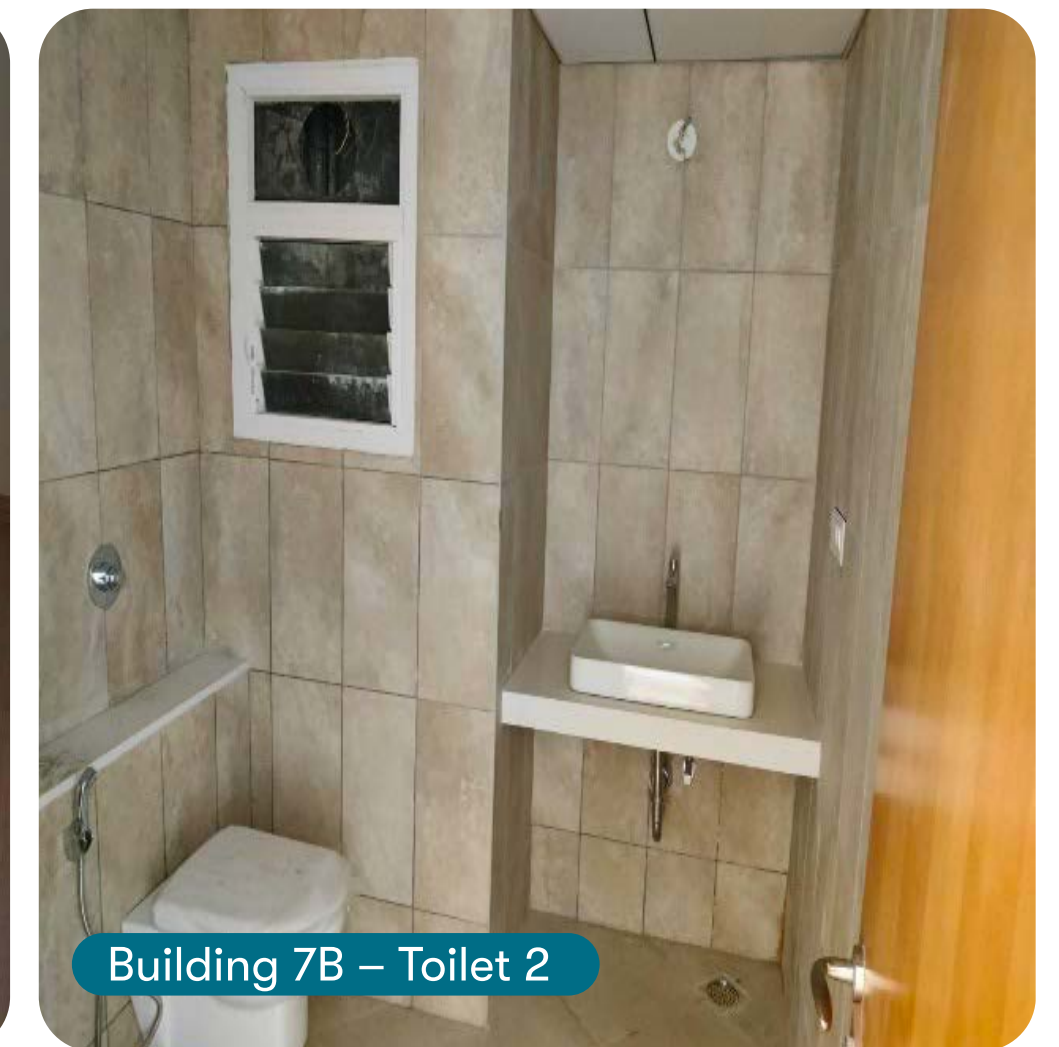
Building 7B - Courtyard



Building 7B - Skylight



Building 7B - Wooden Flooring



Building 7B - Toilet 2

PROJECT UPDATES

Leaves & Lives

PHASE 1

- Building 1 – The ground floor slab work in 6 units and 1st floor slab work in 4 units have been completed.
- Building 2 – The ground floor & 1st floor slab work in 2 units has been completed.
- Building 3 – The shell and core work in 10 units has been completed.
- Building 4 – The ground floor, 1st floor, 2nd floor slab work in 6 units & terrace floor slab work in 5 units have been completed.
- Building 5 – The ground floor slab work in 7 units and 1st floor slab work in 3 units have been completed.
- Building 6 – The ground floor & 1st floor slab work in 10 units and 2nd floor slab work in 9 units have been completed. The terrace floor slab work in 7 units has been completed.
- The landscape deck, waterproofing, plumbing, and tiling works are in progress.





Building 3



Building 4



Building 6



Building 5



Building 1



Building 2



Main Floor Tiling



Wall Tiling Work

PROJECT UPDATES

Canvas & Cove

PHASE 1

Excavation, shell & core construction work status:

TOWER A

- The excavation work has been completed. The rock breaking work is in progress.

TOWER B

- The excavation work has been completed. The rock breaking work is in progress.

TOWER C

- The excavation work has been completed. The footing and column work is in progress.
- The 1st & 2nd lift columns and footing works are in progress.

TOWER D

- The excavation work has been completed. The shell & core construction work is in progress.
- The footing work has been completed.
- Basement - 01: 70% of the slab work has been completed.
- Basement - 01: The column work is in progress.
- The 2nd lift column work is in progress.
- The soil backfilling & grade slab PCC works are in progress.



Tower A



Tower B



Tower C



Tower C



Tower D



Tower D

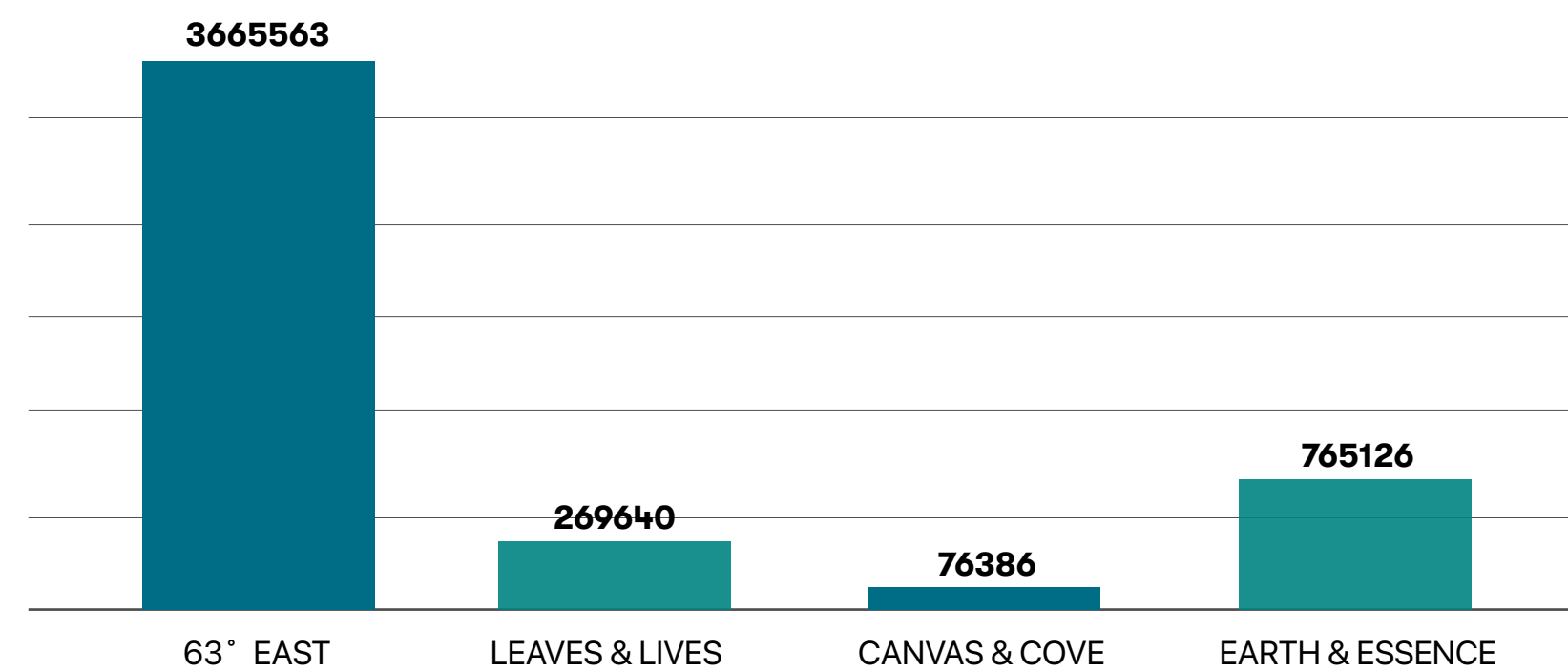
ENVIRONMENTAL HEALTH & SAFETY

Routine inspections are a crucial part of every construction project. They ensure that workflow within a project is planned according to requirements, standards, and regulations. Inspections are necessary to meet industry standards for accuracy, quality and timely construction work. They're essential for successful project delivery.

As part of our regular inspection to evaluate the implementation level of the contractors, we conducted quarterly audits on critical types of equipment, and activities as illustrated below:

- Fire extinguisher, power tools, earth pits, electrical distribution boards, RCCB, lifting equipment, quality of drinking water, calibration of all types of equipment, electrical cable routing, edge protection and housekeeping inspection was conducted for all the projects.

Graphical representation of Safe Man Hours achieved at different projects. We are proud to have achieved 3.6 million safe man-hours at 63° East.



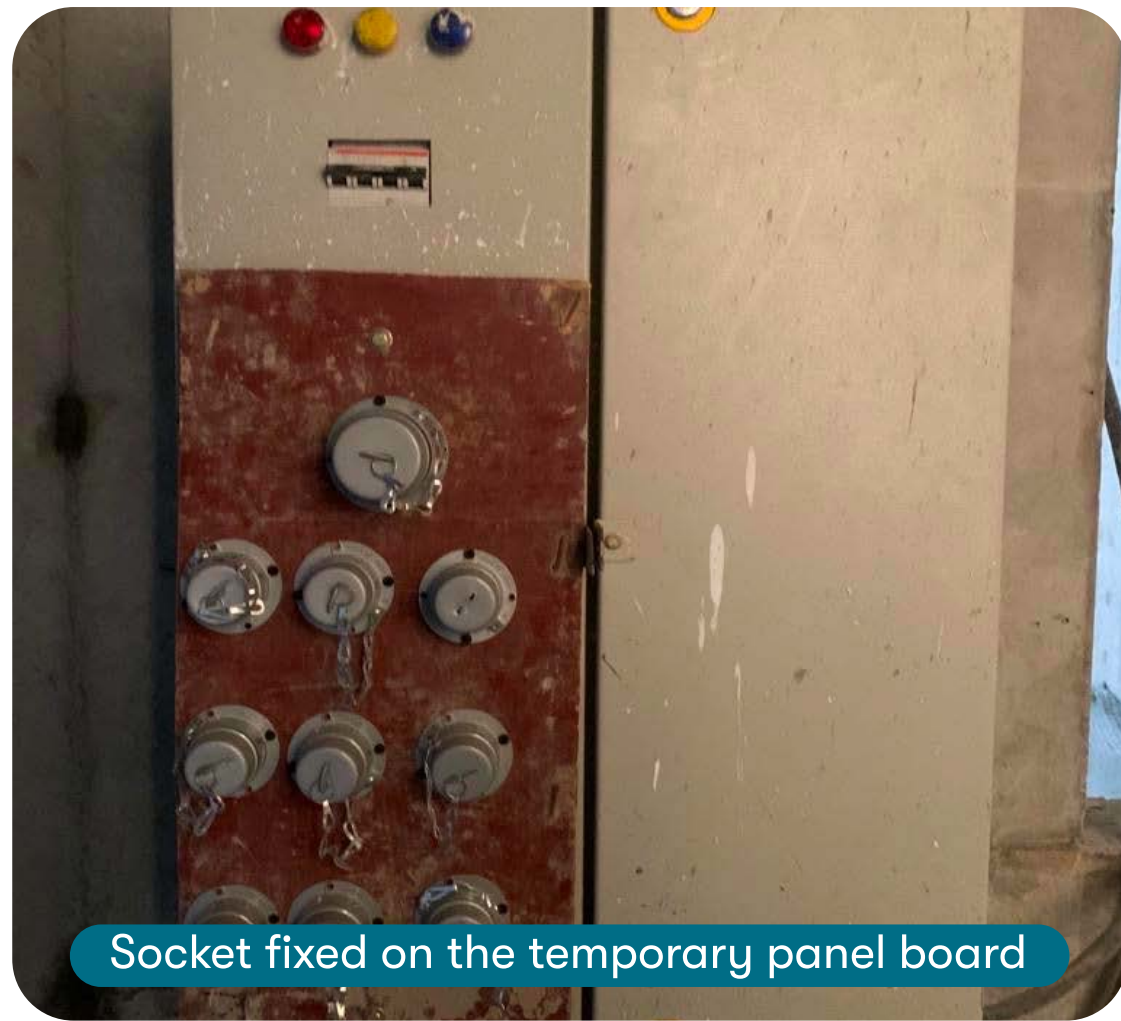
During the month of December 2021, the following activities were carried out at all the project levels:

- Conducted toolbox talks for all labours covering the following topics, to ensure EHS awareness across all the projects.
 - Use of power tools & safe material handling.
 - Scaffolding safety, construction vehicle movement, proper use of personal protective equipment, housekeeping, carpenter safety.
- Safety committee meeting was conducted for all the projects.
- Continuous inspection and upkeep of labour hutment area in all projects.

63° East



2nd Layer Periphery Safety Net For Tower B



Socket fixed on the temporary panel board



Safety Committee Meeting Conducted



RCCB Inspection



Regular Toolbox Talks



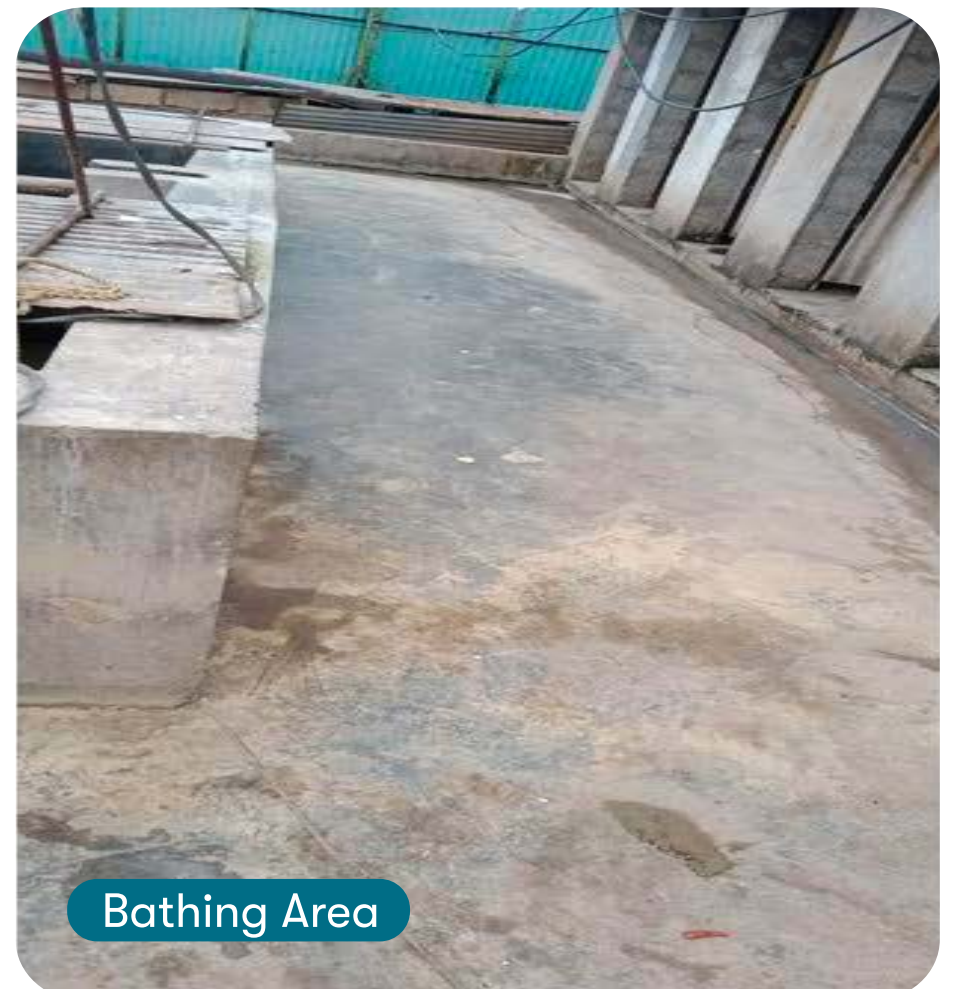
PEP Talk



Housekeeping - Labour Camp



Common Area

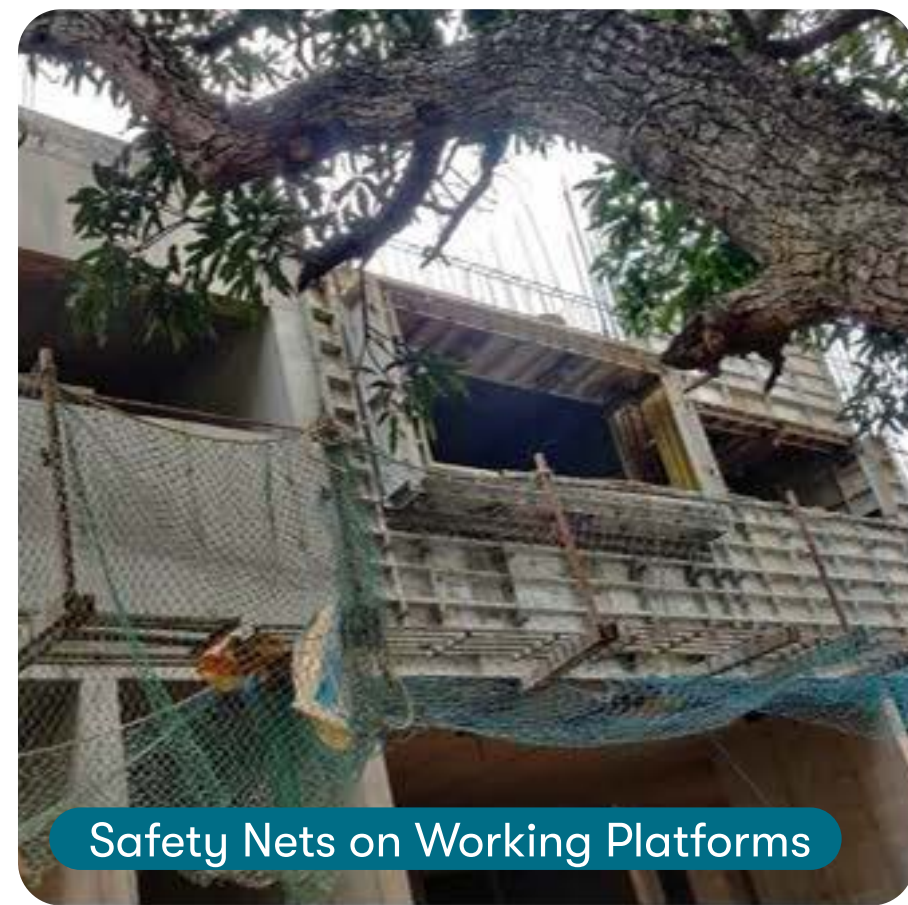


Bathing Area

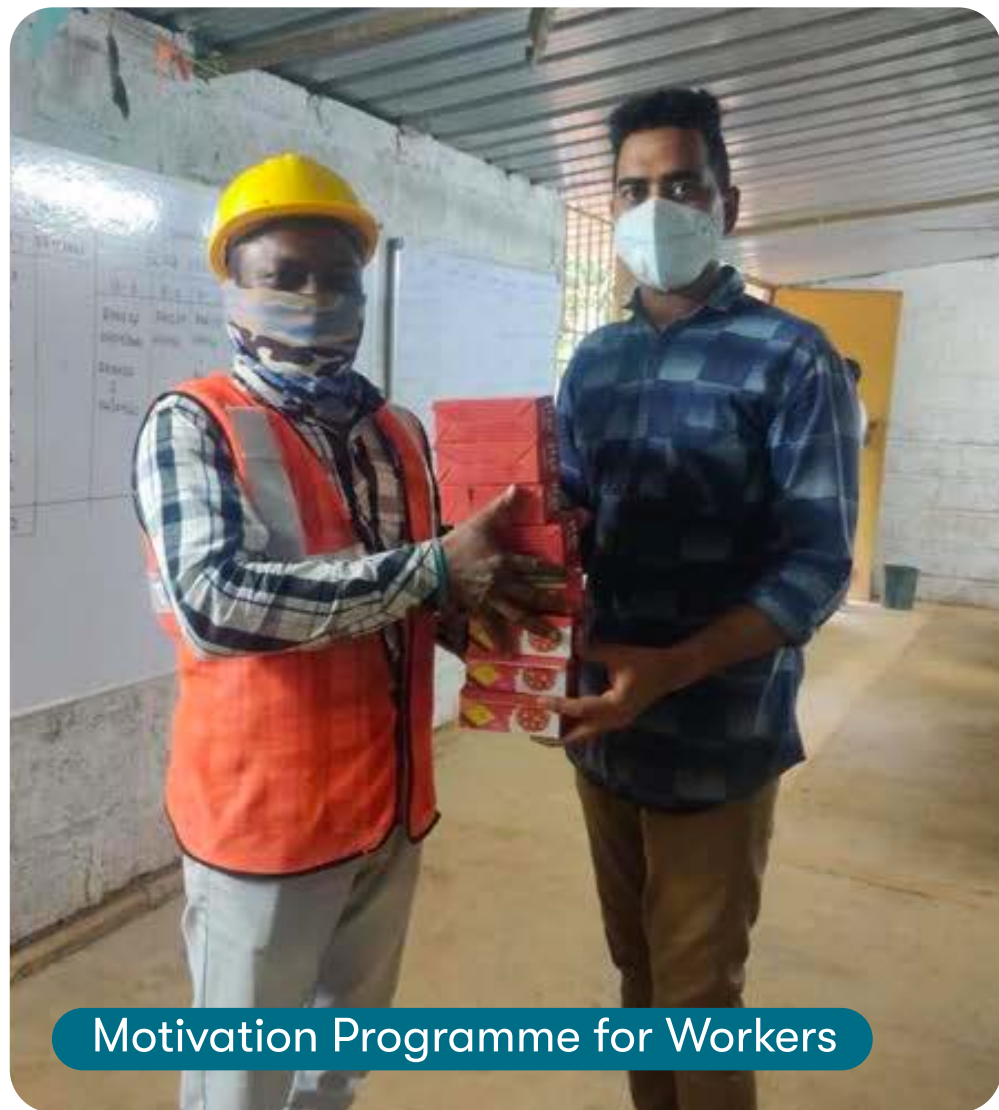
Leaves & Lives



Mass Toolbox Talk



Safety Nets on Working Platforms

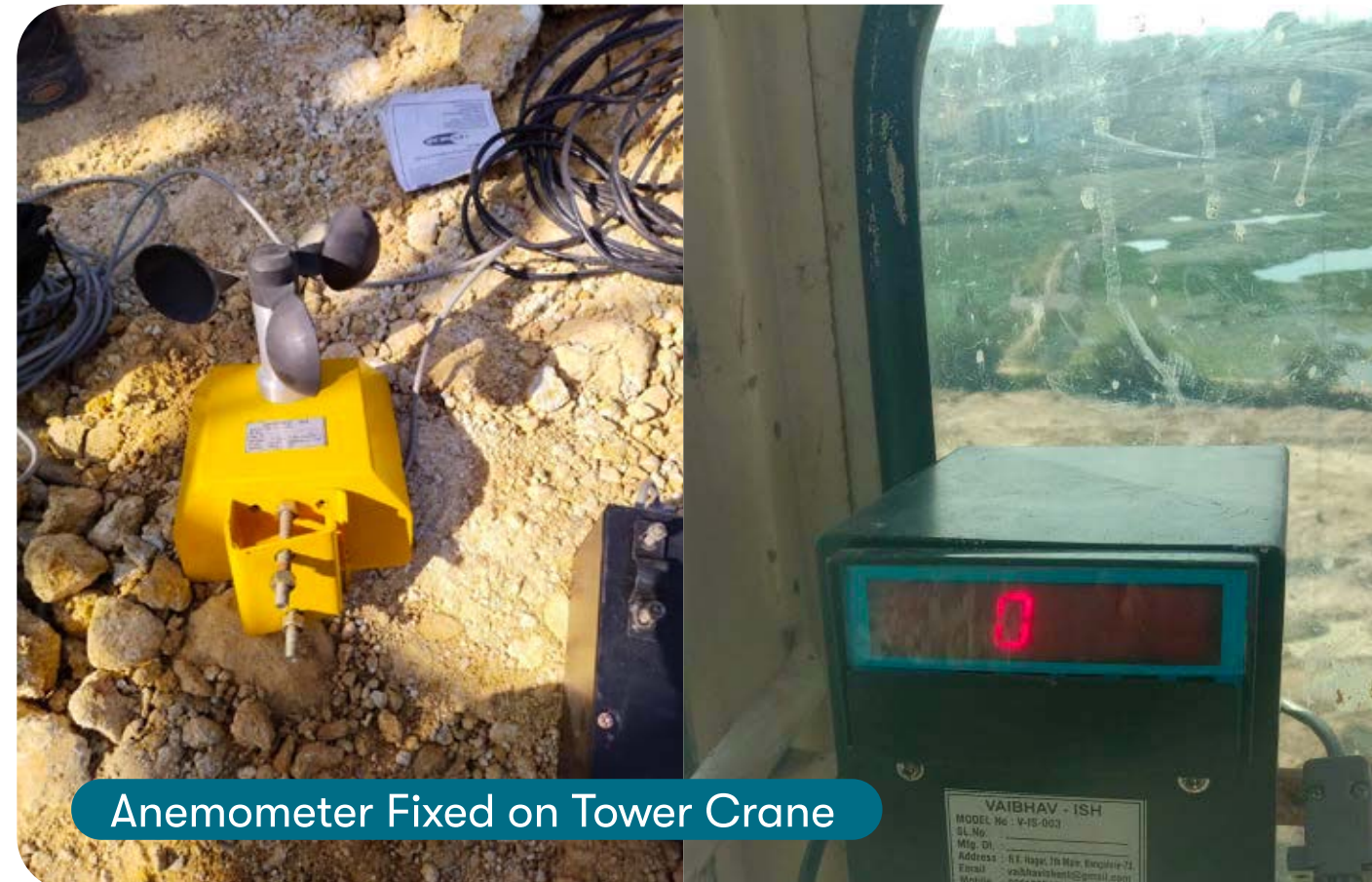


Motivation Programme for Workers



Handrail for Straicase Area

Canvas & Cove



Anemometer Fixed on Tower Crane



Mass Toolbox Talk



Medical Camp



Toolbox talk & Committee Meeting at Earth & Essence



MARKETING

Emailers

Assetz 63 EAST

The epitome of holistic living.

2 & 3 BHK, 82 L, Off Sarjapur Road

BOOK YOUR DREAM HOME, TODAY

Assetz

LAST OPPORTUNITY, THE TIME IS TICKING!

SELECT FEW UNITS LEFT.

marq^{2.0}

3 BHK, 1.52 Cr, Off Whitefield Road

Assetz 63 EAST

Balconies as big as your master bedroom.

BBI - BIG BALCONY HOMES

LAUNCHING SOON REGISTER TODAY

9513778411

Assetz ATMOS & AURA

— 4.45 LAKH — THAT'S ALL YOU NEED TO PAY TO BOOK A LUXURY APARTMENT WORTH ₹62 LAKH

4.45 LAKH TO BOOK A LUXURY APARTMENT WORTH ₹62 LAKH

Hurry! Pay just 5% to book a luxury plot, today

Assetz ATMOS & AURA

The epitome of holistic living.

BOOK YOUR DREAM PLOT, TODAY

Assetz CANYON SCENE

HIGHER PROPERTY PRICES, UNAPPROVED HOME BANK, OR HIGH GOVERNMENT GUARANTEES. THIS DREAMS, IS ALL THE REASONS THAT STOP YOU FROM BUYING YOUR DREAM HOME. WE BRING YOU INCREDIBLE OFFERS AND UNUSUAL SAVINGS BENEFITS.

LIMITED PERIOD OFFER PAY JUST 5% TO BOOK AN APARTMENT

BOOK A HOME, TODAY.

95137 78411 | enquiries@assetzproperty.com

Assetz COMMUNITY CIRCLE

It's almost here... the launch we've all been waiting for!

NEW PHASE LAUNCHING SOON

300+ CUSTOMERS WAITLISTED! 2.5% ON THE BASIC HOME VALUE.

9513 778 401 | enquiries@assetzproperty.com

Assetz

Dear Channel Partner,

aditi.vivik@assetzproperty.com 91983 32840 | akhil.deu@assetzproperty.com 87626 94788

Assetz

Hi there! Let's get social.

Do you want to be successful? Show your stories with us!

YOU'VE GOT THIS

Assetz SUN & SANCTUM

₹10,999 P.M. IS ALL YOU NEED TO PAY TO OWN A LUXURY HOME!

THE DREAM SCHEME

CALL TO KNOW MORE ABOUT THE OFFER

9513778411

Assetz LEAVES & LIVES

A WISH COME TRUE!

OWN A LUXURY HOME BY JUST PAYING ₹ 24,999 PER MONTH TILL POSSESSION.

CALL TO KNOW MORE ABOUT THE OFFER

9513778411 | enquiries@assetzproperty.com

Assetz

THE FUN IS HERE TO STAY!

WHERE: HO, 4TH FLOOR

LET THE GAMES BEGIN!

Assetz

We cordially invite you all to join us as we celebrate the joyous occasion of **Ayudha Puja**

October 15, 2021 • 4-05 PM • DRESS CODE: ETHNIC

Assetz

A festival of ultimate celebrations. A day to transform your dreams into reality.

LIMITED PERIOD FESTIVE OFFER

What are you waiting for? Book your site slot today!

9513778411 | enquiries@assetzproperty.com

Assetz

95% Construction Completed

3 BHK, 37 Cr, C.V. Raman Nagar

TO GET MORE DETAILS: 9513778411 | enquiries@assetzproperty.com

Assetz 63 EAST

Tick! Tick! Tick!

Time is running out. And so is your chance to own a premium 2 BHK apartment in Bangalore's most desirable neighbourhood of Sarjapur.

2 BHK, 82 L ONWARDS, OFF SARJAPUR ROAD

HURRY UP AND BOOK YOUR DREAM HOME, TODAY.

95137 78401 | enquiries@assetzproperty.com

Assetz EARTH & ESSENCE

₹ 15,999 P.M. IS ALL YOU NEED TO PAY TO OWN A LUXURY HOME!

THE DREAM SCHEME

CALL TO KNOW MORE ABOUT THE OFFER.

9513778411 | enquiries@assetzproperty.com

Assetz

Park People, the countdown is closing in! Are you ready?

NEW PHASE LAUNCHING SOON

3 & 4 BHK, 1.08 Cr, Off Whitefield Road

300+ CUSTOMERS WAITLISTED! REGISTER TODAY.

9513778411 | enquiries@assetzproperty.com

MARKETING

Digital Ads

In shorts

Magazine

MARKETING

Newspaper

Someone had to create the right space for your dreams.

INTRODUCING LUXURY PLOTTED DEVELOPMENTS OFF INTL. AIRPORT ROAD

atmos & aura
1200-2000 Sqft | ₹ 61 L Onwards
Before Devanahalli Toll Plaza

EARTH & ESSENCE
2400-4800 Sqft | ₹ 1.58 CR Onwards
10 minutes from Hebbal Flyover

CALL 91 6411 0088 | enquiries@assetzproperty.com

Standees

Luxury homes *by the lake*

PAY JUST ₹ 3 L TO BOOK A HOME NOW AND NOTHING ELSE FOR 3 YEARS

canvas & COVE
2 & 3 BHK Lakeside Apartments | ₹ 63 lakh Onwards
Off Hosur Main Road (Begur Lakefront)

7353663300 | enquiries@assetzproperty.com

Sarjapur's most beloved township. 26-ACRE DEVELOPMENT

LEAVES & LIVES
PHASE 2 - JUST LAUNCHED
4 BHK LUXURY ROW HOUSES | ₹ 2.72 Cr Onwards
Next to Primus School

63° EAST
2 & 3 BHK ECO-LUXURY APARTMENTS | ₹ 79 L Onwards
12 minutes from Wipro SEZ

EASY DOWN PAYMENT SCHEME | BEST PRICE GUARANTEE | FLEXI-PAYMENT PLAN

7353663300 | enquiries@assetzproperty.com

IT'S ONLY GOING TO GET BETTER, WE PROMISE.

New inventories that offer luxury of the highest order, to be launched soon.

RESERVE A LUXURIOUS 3 BHK NOW

For exclusive access and pre-launch price, get in touch with the sales manager.

A HOME AMIDST 6 ACRES OF PARKS. A LIFE AMIDST 600+ PARK PEOPLE.

A new phase of ultra-luxury lifestyle, launching soon.

RESERVE PREMIUM 3 & 4 BHK APARTMENTS NOW

Get in touch with the sales manager to avail exclusive pre-launch price on the new inventories.

MARKETING

Standees

Assetz
ಅಸ್ಸೆಟ್ಸ್

LOCATIONS THAT FIT YOUR NEEDS.
— HOMES THAT FIT YOUR DREAMS. —

63° EAST
2 & 3 BHK
ECO-LUXURY APARTMENTS
₹82 L ONWARDS
OFF SARJAPUR ROAD
(12 MINUTES FROM WIPRO)

TOWER A & F LAUNCHING SOON

marq 2.0
3 BHK
ULTRA-MODERN APARTMENTS
₹1.13 Cr ONWARDS
Whitefield-Hoskote Road
(4 KM FROM PROPOSED METRO STATION)

NEW PHASE COMING SOON

7353663300 | enquiries@assetzproperty.com
CGI Artist's Impression | T&C Apply

Assetz
ಅಸ್ಸೆಟ್ಸ್

OFFERING THE BEST OF BOTH WORLDS.

SUN & SANCTUM
Off KR Puram (Within BBMP Limits) | 2 & 3 BHK BOUTIQUE APARTMENTS | ₹82 L ONWARDS

marq 2.0
Whitefield-Hoskote Road (4 KM FROM PROPOSED METRO STATION) | 3 BHK ULTRA-MODERN APARTMENTS | ₹99 L ONWARDS

LIMITED PERIOD OFFER
Easy Down Payment Scheme | Flexi-Payment Plan | No Pre-Emi for 12 Months

7353663300 | enquiries@assetzproperty.com
T&C Apply

Hoardings

Assetz
ಅಸ್ಸೆಟ್ಸ್

RERA NO: PRM/KA/RERA/1251/310/PR/200702/003480

canvas & cove

PAY JUST ₹3.30 L TO BOOK A HOME AND NOTHING ELSE FOR 3 YEARS

2 & 3 BHK LAKESIDE APARTMENTS

₹66 L ONWARDS

OFF HOSUR MAIN ROAD

81529 97700
assetzproperty.com

CREDAI | WWW.RERA.KARNATAKA.GOV.IN • CGI ARTIST'S IMPRESSION T&C APPLY

Assetz
ಅಸ್ಸೆಟ್ಸ್

RERA NO: PRM/KA/RERA/1251/446/PR/190504/002547

INTRODUCING BBI BIG BALCONY HOMES

63° EAST | **3 BHK ECO-LUXURY APARTMENTS** | **1.05 CR ONWARDS** | **OFF SARJAPUR ROAD** (10 MINUTES FROM WIPRO CORPORATE OFFICE)

LAUNCHING SOON. REGISTER TODAY!

81529 97700 • assetzproperty.com • rera.karnataka.gov.in • T&C Apply • CREDAI

Assetz
ಅಸ್ಸೆಟ್ಸ್

RERA NO: PRM/KA/RERA/1251/446/PR/201001/003626

Park People

We like our space. All 22 acres of it

6 acres of parks | 25+ amenities | In-campus school | Luxury township living

PHASE - 1 & 2 SOLD OUT
NEW PHASE COMING SOON!

marq | 3 & 4 BHK | OFF WHITEFIELD ROAD

The better life

REGISTER TODAY
8152 99 77 00 | assetzproperty.com | www.rera.karnataka.gov.in | T&C Apply

MARKETING

Hoardings

The world is closer with the **metro** just 3 kms away.

Now move between the bustling city and your green home, whenever you want.

Assetz

marq
The better life

Assetz

UNLOCK ENDLESS LEVELS OF LUXURY LIVING.

LEAVES & LIVES

4 BHK Luxury Row Houses

PHASE 2 - JUST LAUNCHED

Assetz

THE PERFECT LOCATION FOR YOUR PERFECT STORY.

4 BHK Luxury Row Houses

PHASE 2 - JUST LAUNCHED

LEAVES & LIVES

Assetz

NEVER MISS A MOMENT OF TRANQUILITY.

LEAVES & LIVES

4 BHK LUXURY ROW HOUSES

PHASE 2 - JUST LAUNCHED

Assetz

NEW TOWERS LAUNCHING SOON.

Live the exclusive life.

REGISTER TODAY

TO BLOCK AN EXCLUSIVE CLUBHOUSE FACING UNIT.

63° EAST

3 BHK ECO-LUXURY APARTMENTS

PRM/K/A/RERA/1251/446/PR/190504/002547 | T&C APPLY

Assetz

A NOT-SO-ORDINARY LIFE IN A NOT-SO-ORDINARY LOCATION.

LEAVES & LIVES

4 BHK LUXURY ROW HOUSES

PHASE 2 - JUST LAUNCHED

Assetz

INTRODUCING **BBH** BIG BALCONY HOMES

THE DREAM SCHEME

PAY JUST **₹9,999 P.M.** TILL POSSESSION TO OWN A LUXURY HOME.

63° EAST

3 BHK ECO-LUXURY APARTMENTS

REGISTER TODAY TO AVAIL EXCLUSIVE LAUNCH PRICE.

PRM/K/A/RERA/1251/446/PR/190504/002547 | T&C APPLY

RERA NO: PRM/K/A/RERA/1251/446/PR/201001/003626

Assetz

We like to see a bit of green everywhere we go.

PHASE - 1 & 2 SOLD OUT

NEW PHASE COMING SOON!

That's why we chose 6 acres of parks.

80% open space | 25+ amenities | In-campus school | Luxury township living

marq
The better life

3 & 4 BHK OFF WHITEFIELD ROAD

REGISTER TODAY 8152 99 77 00

assetzproperty.com | www.marq.karnataka.gov.in | 44232323 | T&C Apply

MARKETING

Hoardings

Discover the township immersed in nature's splendour.

Assetz
LEAVES & LIVES

4 BHK
Luxury Row Houses

PHASE 2
JUST LAUNCHED

Where greenery engulfs you in a mesmerizing manner.

Assetz
LEAVES & LIVES

4 BHK
Luxury Row Houses

PHASE 2
JUST LAUNCHED

Exclusively for those who like nothing average.

Assetz
LEAVES & LIVES

4 BHK
Luxury Row Houses

PHASE 2
JUST LAUNCHED

26-ACRE TOWNSHIP • SPREAD ACROSS 6.1 ACRES • 25+ AMENITIES • 150 OLD-WORLD TREES

Experience the Luxury of alfresco living.

Assetz
LEAVES & LIVES

4 BHK
Luxury Row Houses

PHASE 2
JUST LAUNCHED

Assetz
63° EAST

INTRODUCING **BBI-1**
BIG BALCONY HOMES

3 BHK ECO-LUXURY APARTMENTS
1420 - 1866 SQFT

₹1.05 Cr
Onwards

REGISTER TODAY!
81529 97700

OFF SARJAPUR ROAD
10 MINUTES FROM WIPRO CORPORATE OFFICE

We want more of what makes our soul happy.
Like 25+ world-class amenities.

Assetz
ಅಸ್ಸೆಟ್ಸ್

PHASE - 1 & 2 SOLD OUT NEW PHASE LAUNCHING SOON

murq
The better life

3 & 4 BHK

OFF WHITEFIELD ROAD
Near Sri Sanyo Sai Baba Ashram

REGISTER TODAY
8152 99 77 00

assetzproperty.com
www.rera.karnataka.gov.in | T&C Apply

CREDAI

Flag Poles

- Assetz**
26-ACRE SUSTAINABLE TOWNSHIP
STUDIO, 2 & 3 BHK ECO-LUXURY APARTMENTS
NEW TOWERS LAUNCHING SOON
63° EAST
- Assetz**
40,000 SQFT CLUBHOUSE
STUDIO, 2 & 3 BHK ECO-LUXURY APARTMENTS
NEW TOWERS LAUNCHING SOON
63° EAST
- Assetz**
68% OPEN SPACE
STUDIO, 2 & 3 BHK ECO-LUXURY APARTMENTS
NEW TOWERS LAUNCHING SOON
63° EAST
- Assetz**
QUALITY. DESIGN. LUXURY.
STUDIO, 2 & 3 BHK ECO-LUXURY APARTMENTS
NEW TOWERS LAUNCHING SOON
63° EAST
- Assetz**
-71% WATER SAVED & RECYCLED
STUDIO, 2 & 3 BHK ECO-LUXURY APARTMENTS
NEW TOWERS LAUNCHING SOON
63° EAST
- Assetz**
AN EXPERIENCE YOU CAN LIVE.
3 BHK BIG BALCONY HOMES
PREMIUM TOWER LAUNCHING SOON
63° EAST
- Assetz**
THE EPITOME OF SERENITY.
3 BHK PREMIUM APARTMENTS
CLUBHOUSE FACING TOWER LAUNCHING SOON
63° EAST

MARKETING

Mobile Van Ads

Assetz ಅಸ್ಸೆಟ್ಸ್

THE BIG BALCONY HOMES
THAT TRULY BRING THE OUTDOORS, INDOOR!

COMING SOON!

63° EAST

3 BHK ECO-LUXURY APARTMENTS
1420 - 1866 SQFT

₹1.05 CRORE Onwards

OFF SARJAPUR ROAD

BOOK A SITE VISIT NOW **7026 88 00 99**
enquiries@assetzproperty.com

PRM/KA/RERA/1251/446/PR/190504/002547 | T&C APPLY

63° EAST The 'big-balcony homes' that truly bring the outdoors, indoor!

NEW TOWERS LAUNCHING SOON

TOWER C & D SOLD OUT

TOWER B SELLING FAST

2 & 3 BHK ECO-LUXURY APARTMENTS

OFF SARJAPUR ROAD

₹ 82 L ONWARDS

TO BOOK A SITE VISIT, CALL 7026880099
PRM/KA/RERA/1251/446/PR/190504/002547 | enquiries@assetzproperty.com | T&C apply

600+ PARK PEOPLE. 22 ACRES OF IT.
ONE LAST CHANCE TO BE A PART OF SOMETHING BIG.

murq

PHASE 1 & 2 SOLD OUT | **NEW PHASE LAUNCHING SOON**

3 & 4 BHK Ultra-Modern Apartments **₹ 1.13 CR** Onwards

Off Whitefield Road (4 KM from Proposed Metro Station)

ENQUIRE NOW 7026880099 | enquiries@assetzproperty.com | PRM/KA/RERA/1251/446/PR/190504/002547

NEW TOWERS LAUNCHING SOON

3 BHK ECO-LUXURY APARTMENTS
1420 - 1866 SQFT

₹ 1.05 Cr Onwards

7026880099
enquiries@assetzproperty.com

2 & 3 BHK ECO-LUXURY APARTMENTS

OFF SARJAPUR ROAD

₹ 82 L ONWARDS

TOWER C & D SOLD OUT

TOWER B SELLING FAST

7026880099 | PRM/KA/RERA/1251/446/PR/190504/002547 | enquiries@assetzproperty.com | T&C apply

3 & 4 BHK ULTRA-MODERN APARTMENTS

Off Whitefield Road (4 KM from Proposed Metro Station)

₹ 1.13 CR ONWARDS

PHASE 1 & 2 SOLD OUT | **NEW PHASE LAUNCHING SOON**

ENQUIRE NOW 7026880099 | PRM/KA/RERA/1251/446/PR/190504/002547 | enquiries@assetzproperty.com | T&C apply

Assetz **63° EAST**

3 BHK ECO-LUXURY APARTMENTS
1420 - 1866 SQFT

₹ 1.05 Cr Onwards

OFF SARJAPUR ROAD

TOWER C & D SOLD OUT

TOWER B SELLING FAST

BOOK A SITE VISIT NOW 7026 88 00 99

PRM/KA/RERA/1251/446/PR/190504/002547 | T&C APPLY

2 & 3 BHK ECO-LUXURY APARTMENTS

₹ 82 L ONWARDS

NEW TOWER LAUNCHING SOON

7026880099 | T&C apply

3 & 4 BHK ULTRA-MODERN APARTMENTS

₹ 1.13 CR ONWARDS

NEW PHASE LAUNCHING SOON

7026880099 | T&C apply

MARKETING

Pillar Creatives

SPECIAL LAUNCH OFFERS
3 & 4 BHK
ULTRA-MODERN APARTMENTS
CGI Artist's Impression

This pillar creative features a dark teal background with a circular graphic at the top containing the text 'SPECIAL LAUNCH OFFERS'. Below this, the text '3 & 4 BHK' is prominently displayed in white, followed by 'ULTRA-MODERN APARTMENTS' in a smaller font. The bottom of the pillar shows a night-time CGI rendering of a modern apartment building with a landscaped ground floor. A vertical white line runs down the center of the pillar.

NEW PHASE
—
LAUNCHING SOON
CGI Artist's Impression

This pillar creative has a dark teal background with a circular graphic at the top containing the text 'NEW PHASE' and 'LAUNCHING SOON' separated by a horizontal line. The bottom of the pillar shows a night-time CGI rendering of a modern apartment building with a landscaped ground floor. A vertical white line runs down the center of the pillar.

300+ CUSTOMERS WAITLISTED
—
REGISTER TODAY!
CGI Artist's Impression

This pillar creative has a dark teal background with a circular graphic at the top containing the text '300+ CUSTOMERS WAITLISTED' and a banner below it with 'REGISTER TODAY!'. The bottom of the pillar shows a night-time CGI rendering of a modern apartment building with a landscaped ground floor. A vertical white line runs down the center of the pillar.

SPECIAL LAUNCH OFFERS
EXCLUSIVE LAUNCH PRICE
—
BEST FINANCIAL SCHEMES
CGI Artist's Impression

This pillar creative has a dark teal background with a circular graphic at the top containing the text 'SPECIAL LAUNCH OFFERS'. Below this, the text 'EXCLUSIVE LAUNCH PRICE' and 'BEST FINANCIAL SCHEMES' are displayed in white. The bottom of the pillar shows a night-time CGI rendering of a modern apartment building with a landscaped ground floor. A vertical white line runs down the center of the pillar.

NEW TOWERS
LAUNCHING SOON
—
63° EAST

This pillar creative has a solid green background. The text 'NEW TOWERS' and 'LAUNCHING SOON' is written vertically in white. Below this, a horizontal line is followed by '63° EAST' in white.

3 BHK
—
ECO-LUXURY APARTMENTS
—
63° EAST

This pillar creative has a dark green background with a faint image of a building. The text '3 BHK' is at the top, followed by 'ECO-LUXURY APARTMENTS' in white. Below this, a horizontal line is followed by '63° EAST' in white.

SPECIAL LAUNCH OFFERS
EXCLUSIVE LAUNCH PRICE
— ○ —
BEST FINANCIAL SCHEMES
—
63° EAST

This pillar creative has a dark blue background with a faint image of a building. The text 'SPECIAL LAUNCH OFFERS' is at the top, followed by 'EXCLUSIVE LAUNCH PRICE' and 'BEST FINANCIAL SCHEMES' in white. Below this, a horizontal line with a small circle in the center is followed by '63° EAST' in white.

REGISTER TODAY!
—
200+ CUSTOMERS WAITLISTED
—
63° EAST

This pillar creative has a solid blue background. The text 'REGISTER TODAY!' is in a white box at the top, followed by '200+ CUSTOMERS WAITLISTED' in white. Below this, a horizontal line is followed by '63° EAST' in white.

MARKETING

Easel Boards

63 EAST

DIVE INTO 2022 WITH THE ULTIMATE DEAL OF THE SEASON.

THE DREAM SCHEME

UNIT	EMI PER MONTH
2 BHK	₹ 7,999
3 BHK	₹ 9,999
3 BHK (1+100 SQFT)	₹ 8,999
3 BHK (1+300 SQFT)	₹ 9,999
3 BHK - 3T	₹ 14,999
2 & 3 BHK (2+300 SQFT)	₹ 82 Lakh

ASK FOR MORE DETAILS.

EARTH & ESSENCE

DIVE INTO 2022 WITH THE ULTIMATE DEAL OF THE SEASON.

THE DREAM SCHEME

UNIT	EMI PER MONTH
3 BHK - 3T	₹ 19,999

3 BHK LUXURY ROW HOUSES | ₹ 2.6 Crore ONWARDS

ASK FOR MORE DETAILS.

CANYAS

DIVE INTO 2022 WITH THE ULTIMATE DEAL OF THE SEASON.

THE DREAM SCHEME

UNIT	EMI PER MONTH
STUDIO	₹ 3,999
2 BHK	₹ 7,999
3 BHK	₹ 8,999

Studio, 2 & 3 BHK LUXURIOUS APARTMENTS | ₹ 28 Lakh ONWARDS

ASK FOR MORE DETAILS.

Signature

A CHANCE TO DOUBLE THE CELEBRATION, COMING SOON

NEW TOWER LAUNCHES + REFERRAL REWARDS UP TO 2 LAKH

PROJECTS: MARO, 63 DEGREE EAST

REFER NOW AND EARN UP TO 2% 2.5% ON THE BASIC HOME VALUE

CLICK HERE TO REFER

Offer Validity: December 31, 2021

Disclaimer: Offer valid only on new tower inventory.

COMMUNITY CIRCLE

Emailers

Dear CRM Team, it's time to get rewarded!

Here's your chance to increase your monthly earnings with our special employee incentive programme, exclusively curated for the CRM team.

- Encourage our existing customers to refer an Assetz home.
- Your customer's referral books a home.
- You earn 0.1% of the referral value.

HURRY! SUBMIT YOUR REFERRALS TODAY.

95137 78401 | communitycircle@assetzproperty.com | 1st floor

Let the celebrations continue!

Refer and earn up to 2% 2.5% ON THE BASIC HOME VALUE*

OFFER VALID TILL 31 DECEMBER, 2021

HOW IT WORKS?

- Refer your friends/family.
- Your referral buys an Assetz home.
- You earn 0.1% of the referral value.

CLICK TO REFER

95137 78401 | communitycircle@assetzproperty.com | 1st floor

Referral made easy!

How it works?

- Refer an Assetz home to your friends/family.
- We will get you back with your referral reward and your customer's referral buys an Assetz home.
- You will earn 0.1% of the referral value.
- Click to refer your friends/family.

HURRY! SUBMIT YOUR REFERRALS TODAY.

95137 78401 | communitycircle@assetzproperty.com | 1st floor

You can help 'build your community.'

Refer and earn up to 2.5% of the basic home value.

How it works?

- Refer an Assetz home to your friends/family.
- We will get you back with your referral reward and your customer's referral buys an Assetz home.
- You will earn 0.1% of the referral value.
- Click to refer your friends/family.

VALIDITY: DECEMBER 31, 2021

CLICK TO REFER

95137 78401 | communitycircle@assetzproperty.com | 1st floor

DOUBLE YOUR CELEBRATIONS.

FAVOURITE LOCATIONS | FAVOURABLE OFFERS

LIMITED PERIOD OFFER

- FAST-PAYMENT PLAN
- BEST PRICE GUARANTEE
- EASY DOWN PAYMENT SCHEME
- NO PRE-EMI FOR UP TO 36 MONTHS

Refer & earn 2% on the basic home value.

63 EAST

DREAM IT. OWN IT. LIVE IT.

REFER & EARN 2% ON THE BASIC HOME VALUE.

READY-TO-USE CLUBHOUSE | LIMITED PERIOD OFFERS | SELLING FAST

95137 78401 | communitycircle@assetzproperty.com | 1st floor

ONE SPECIAL FESTIVAL. UNLIMITED REASONS TO CELEBRATE.

DUSSEHRA

LIMITED PERIOD FESTIVE OFFER

REFER A FRIEND/FAMILY & EARN UP TO ₹8.4 LAKH IN REFERRAL REWARDS

95137 78401 | communitycircle@assetzproperty.com | 1st floor

An opportunity to move into the extraordinary.

REFER & EARN UP TO 2.5% ON THE BASIC HOME VALUE

95137 78401 | communitycircle@assetzproperty.com | 1st floor

An investment as low as your monthly SIP can get you a home!

NOW PAY JUST ₹ 10,999 P.M.

REFER & EARN UP TO 2.5% ON THE BASIC HOME VALUE

95137 78401 | communitycircle@assetzproperty.com | 1st floor

Here's to the end of a beautiful year, and beginning of another.

REFER & EARN UP TO 2% ON THE BASIC HOME VALUE

95137 78401 | communitycircle@assetzproperty.com | 1st floor

Employee Engagement Activity

ANNIVERSARY CELEBRATION

Employees who have completed 5 Years in the organization for the last quarter.



PRASATH V
PROJECTS



VIJAY KUMAR S
CRM

EMPLOYEE ENGAGEMENT

As a part of the employee engagement initiatives, various health, and wellness related webinars were organized through our insurance broker during last quarter FY Q3 (October- December 2021).

- **Doodle to Express Gratitude & De-stress**
- **Panel Discussion - Various Facets of Employee's Mental Wellbeing**
- **COVID 19 (Omicron): All You Need To Know About The New Variant Of Covid 19-2021**
- **Fun Ways to Relax & De-stress**
- **DIY Christmas**
- **Healthy treats for the Holiday season**
- Personal Loan Campaign from HDFC was organized for employees on October 8, 2021.
- We migrated all the users to single sign-on for LMS & ERP and employees are now able to access both ERP & LMS features using a single sign-on.
- Ayudha Puja was performed on October 13, 2021.



AYUDHA PUJA October 13, 2021



DIWALI PUJA November 4, 2021



CHRISTMAS CELEBRATION

Fun-filled games/activities were organized on 23rd and 24th December as part of the Christmas Day celebration.

- Foosball Game
- On the Spot Games
- Best Dressed - Christmas Theme
- Bay Decoration

The eventful day continued with announcement of various contest winners & prize distribution followed by a small celebration.

FOOSBALL Eagle Boys

- Ramesh Naik
- Vijayaraj HK
- Indranil Dutta

BAY DECORATION Dumbledore's Army

- Rajesh G
- Banu Priya
- Sneha
- Kaushik Gowda
- Ramya MR

BEST DRESSED Jolly Holly Killers

- Beena Dias
- Vathsala MN
- Chaithra G
- Arun G
- Nagendra S

ON THE SPOT GAMES Royals

- Rayapureddy Siva Ganesh
- Devara Sunki Reddy
- Ramesh Naik



Bay Decoration



Foosball



On the Spot Games



Best Dressed

Joining our Fold

It gives us immense pleasure to welcome the following people who have joined Assetz Property Group between **October'21 - December'21**



Vinayaka MC
Assistant Manager - Planning

Vinayaka comes with over 7 years of experience in the field of Planning. He holds a Bachelor's degree in Civil Engineering from BDT College of Engineering, Davangere. Prior to joining us, he was associated with Colliers International as Assistant Manager - Planning.



Josita Nyna B
Senior Executive - EMT

Josita comes with over 8 years of experience in the field of Customer Relations & Office Administration. She holds a Bachelor's degree in Business Management from Kuvempu University. Prior to joining us, she was associated with Blue Valley as HR Executive.



Girish KR
Project Engineer

Girish comes with over 3 years of experience in the field of Construction. He holds a Bachelor's degree in Civil Engineering from VTU, Belagavi. Prior to joining us, he was associated with Salarpuria Sattva as Site Engineer.



Akshay C
Assistant Manager - Sales

Akshay comes with over 6 years of experience in the field of Sales. He holds a Bachelor's degree in Science from Bangalore University. Prior to joining us, he was associated with Bookaprop Estates as Regional Manager.



Juliet Seema Noronha
Senior Executive - Sales

Juliet comes with over 3 years of experience in the field of Sales. She holds an MBA degree in Marketing from JSS Centre for Management Studies. Prior to joining us, she was associated with Sobha Limited as Senior Executive Sales.



Shruthishree G
Manager - Contracts

Shruthishree comes with over 12 years of experience in the field of Contracts. She holds an MBA in Construction & Supply Chain Management from IIBM Institute of Business Management. Prior to joining us, she was associated with Shapoorji Pallonji Real Estate as Contract Manager.



Muthu Madasamy Manickam M
Senior Project Engineer

Muthu comes with over 12 years of experience in the field of Construction. He holds a Diploma in Civil Engineering from P A C Ramasamy Polytechnic College, Rajapalayam. Prior to joining us, he was associated with Brigade Group as Project Engineer.



Kubera N
Senior Executive - Sales

Kubera comes with over 3 years of experience in the field of Sales. He holds an MBA degree in Marketing from VTU, Belgaum. Prior to joining us, he was associated with Sobha Limited as Senior Executive - Sales.



Gourav Singh
Senior Executive - Sales

Gourav comes with over 2 years of experience in the field of Sales. He holds a Diploma in Civil Engineering from KK Polytechnic, Dhanbad. Prior to joining us, he was associated with Pashmina Developers as Sales Manager.



Arun Balaji VS
Engineer - QS

Arun comes with over 3 years of experience in the field of QS. He holds a Bachelor's degree in Civil Engineering from Anna University. Prior to joining us, he was associated with Salarpuria Sattva as QS Engineer



Shibi H S
Senior Manager - Sales

Shibi comes with over 9 years of experience in the field of Sales. He holds an MBA in Marketing from VTU, Belgaum.



Arjith Sheela Kumar
Executive – Marketing

Arjith comes with over 2 years of experience in the field of Marketing. He holds a Master's degree in Arts from Amrita Vishwa Vidyapeetham. Prior to joining us, he was associated with Verycom as Brand Associate.



Nandini BS
Executive - EMT

Nandini comes with over 7 months of experience in the field of Pre-Sales. She holds a Bachelor's degree in Computer Application from Sha-Shib College.



Prity Dutta
Senior Executive - Sales

Prity comes with over 3 years of experience in the field of Sales. She holds an MBA degree in Human Resources & Marketing from Garden City University. Prior to joining us, she was associated with Proptiger as Senior Relationship Manager.



Shraddha Sheetal
Manager – Design

Shraddha comes with over 8 years of experience in the field of Design. She holds a Bachelor's degree in Architecture from Piloo Mody College of Architecture, Cuttack. Prior to joining us, she was associated with Godrej Properties as Assistant Manager - Design



Joydeep Pal
Assistant Manager - Sales

Joydeep comes with over 7 years of experience in the field of Sales. He holds a Bachelor's degree in Arts from University of Burdwan. Prior to joining us, he was associated with Proptiger as Senior Relationship Manager.



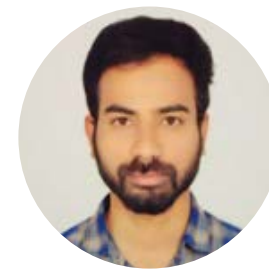
Abhilash R
Manager - Sales

Abhilash comes with over 10 years of experience in the field of Sales. He holds a Bachelor's degree in Information Science from VTU. Prior to joining us, he was associated with Vaishnavi Infrastructure Pvt Ltd as Assistant Manager – Sales.



Priyanka P
Manager - CRM

Priyanka comes with over 12 years of experience in the field of Customer Service. She holds a Bachelor's degree in Business Administration from Vidya Bharati Institute of Management & Technology. Prior to joining us, she was associated with House of Hiranandani as Assistant Manager - CRM.



Anilkumar M
Engineer - QS

Anilkumar comes with over 3 years of experience in the field of QS. He holds a Bachelor's degree in Civil Engineering from VTU, Belagavi. Prior to joining us, he was associated with TJN Constructions as Senior QS.