



Contents

Introduction	3
Location	5
Connectivity	6
Master plan	7
Entry experience	9
Facade	11
Floor plan	12
Interiors	16
Materials	17
Podium	19
Clubhouse	20
Amenities	21
Landscape	23
Sustainability	24
Specifications	27
About Assetz	29



Born Iconic.
A towering presence,
a glorious vision of luxury.

~5 acres.

~87% open space.

3 BHK luxury apartments.



Welcome home.

Set amidst acres of meticulously designed green expanses, Meru & Meadow rises gracefully above the ordinary. Here, panoramic views, refined living spaces and state-of-the-art amenities come together to craft a lifestyle where every moment is curated for those who aspire for more.

Elevated design, extraordinary living.

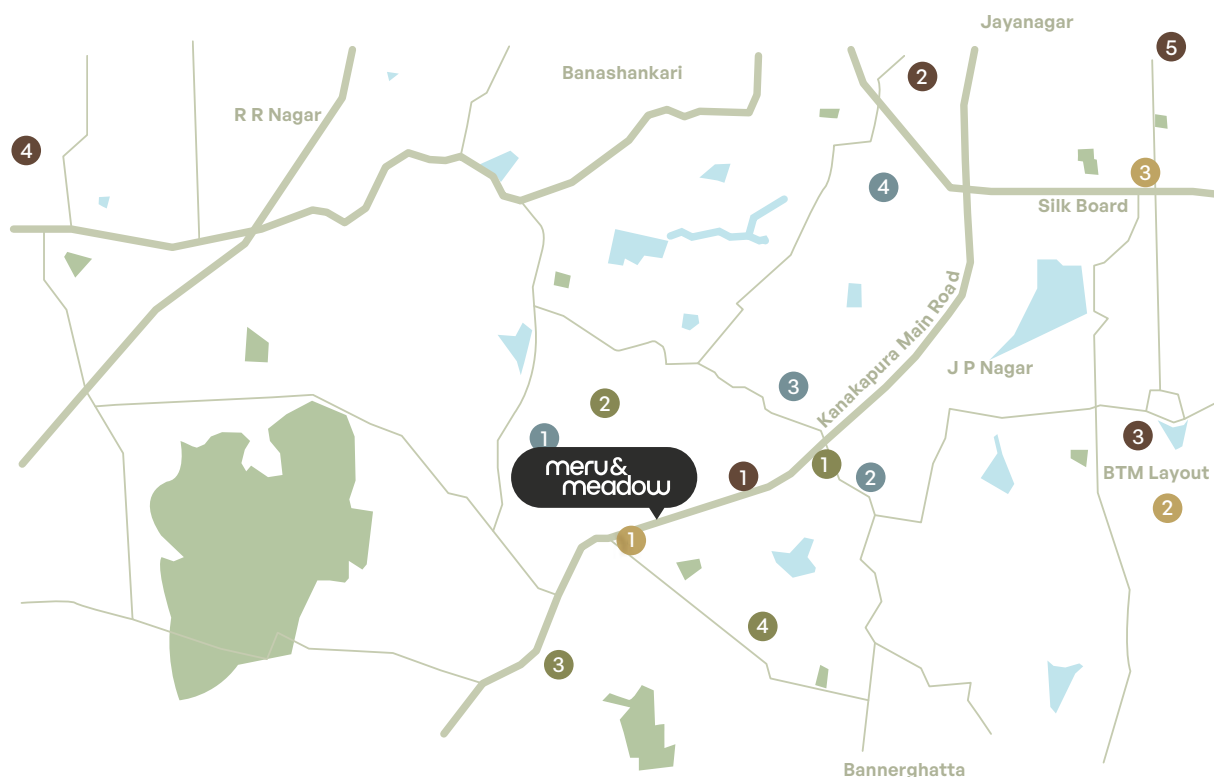
Here, the city's rhythm fades into the background as architecture, luxury and balance come together to create an iconic living experience.



Located on Kanakapura Main Road and walking distance from Doddakallasandra Metro Station, Meru & Meadow offers seamless connectivity to the city.

Life on the high street.

Surrounded by top schools, hospitals and work hubs, it ensures a well-rounded lifestyle. Adding to its charm, these homes are close to ISKCON Temple, offering a serene retreat in a vibrant neighbourhood.



SCHOOLS

- | | |
|------------------------------------------|------------|
| 1 Brooklyn National Public School | 1 minute |
| 2 The British Preparatory School | 5 minutes |
| 3 Delhi Public School | 6 minutes |
| 4 Dayananda Sagar College of Engineering | 10 minutes |

RECREATION

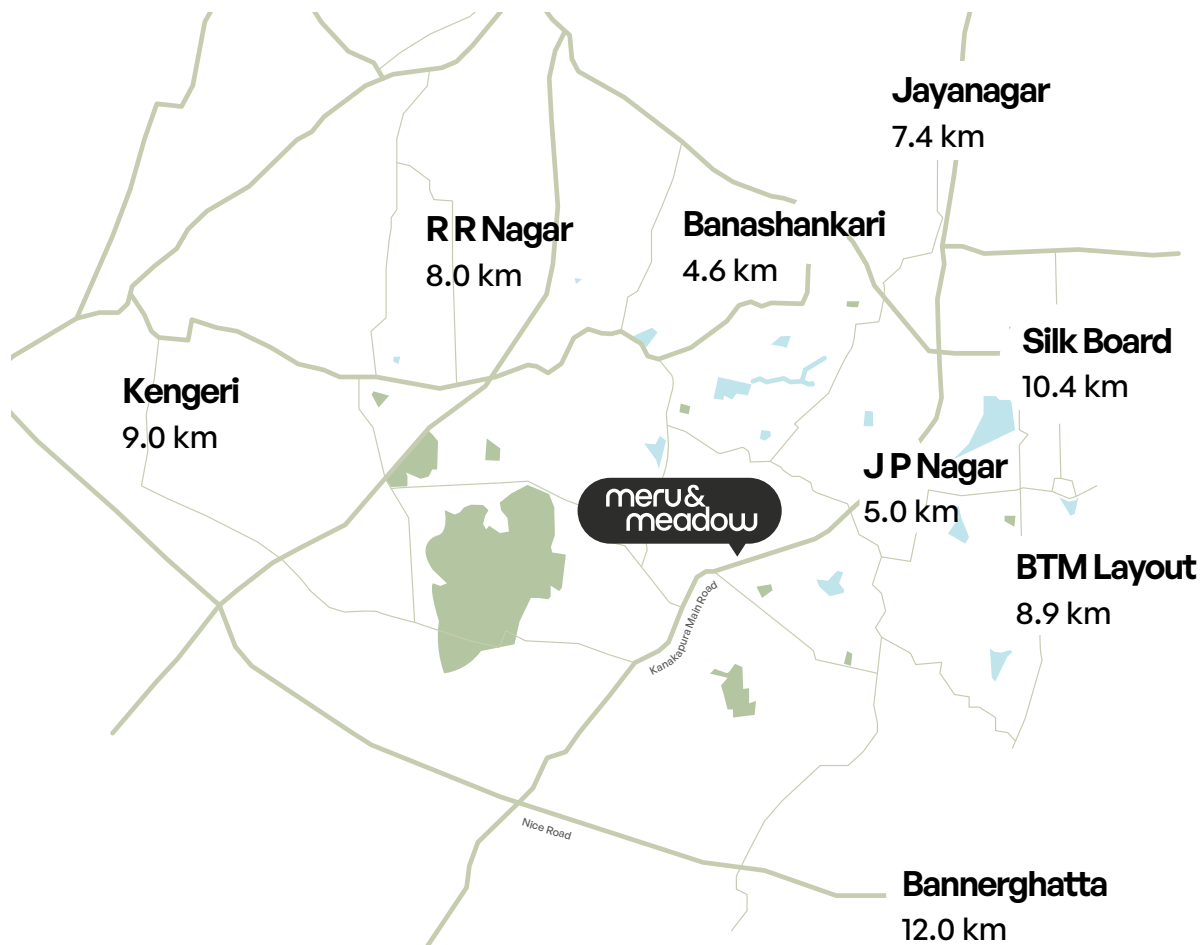
- | | |
|-------------------------|------------|
| 1 Forum South Bengaluru | 3 minutes |
| 2 ISKCON | 5 minutes |
| 3 DMart | 8 minutes |
| 4 Decathlon | 15 minutes |

IT PARKS

- | | |
|-------------------------------|------------|
| 1 Purva Zentech Business Park | 4 minutes |
| 2 Brigade Software Park | 10 minutes |
| 3 Kalyani Magnum Tech Park | 15 minutes |
| 4 Sattva Global City | 18 minutes |
| 5 IBC Knowledge Park | 20 minutes |

HEALTHCARE

- | | |
|--------------------------|------------|
| 1 Cloudnine Hospital | 1 minute |
| 2 Apollo Fortis Hospital | 18 minutes |
| 3 Jayadeva Hospital | 20 minutes |



Connectivity

Kanakapura Main Road	1 minute
Doddakallasandra Metro Station	2 minutes
Banashankari Bus Stand	10 minutes
NICE Road	14 minutes
Kengeri Railway Station	20 minutes
Satellite Bus Stand	22 minutes
Majestic Railway Station	30 minutes

The essence of Meru & Meadow lies in its seamless fusion of architectural brilliance and purposeful design. Every open space and leisure zone is a testament to function meeting finesse.

Designed to Inspire. Crafted to Elevate.

Curated with planned precision, your home is more than a mere residence - it's a sanctuary for your aspirations. At first glance, it may seem effortless. But perfection is never accidental, it's the result of meticulous vision and unparalleled attention to detail.





LEGEND

- | | | |
|------------------------|------------------------------------|-------------------------------------------|
| 01. Entry Gate | 06. Padel Court | 11. Senior Citizen Park with Seating Pods |
| 02. Water Feature | 07. Pickleball Court | 12. Pets' Park |
| 03. Landscape Island | 08. Trellis with Seating | 13. Outdoor Gym |
| 04. Kids' Play Area | 09. Outdoor Working / Reading Pods | 14. Services (OWC & Transformer Yard) |
| 05. Multipurpose Court | 10. Amphitheatre | 15. Exit Gate |

Step into a world of refined living,
where every entrance is enveloped in luxury.

The gates of distinction.

At Meru & Meadow, every arrival makes a statement. Every entrance, an experience. Step through the grand entry plaza and glide into the plush lobbies that exude elegance. The experience doesn't end there. It continues, seamlessly, all the way to the welcoming foyer of your home.





Step into lobbies framed by stately colonnades, where architectural brilliance meets refined luxury. Tropically landscaped and bathed in natural light, the lobbies offer a warm and sophisticated welcome.

Designed for both grandeur and comfort, the lobby entrance is not just a transition - it's an experience that sets the tone for iconic living.



A facade like none other.

The exteriors tell a story of textures and light. The elegant stone-finish colonnades in beige stand witness to the timeless grandeur of the structure, while the striking grey brick-finish facade lends a contemporary aesthetic - an interplay of space and fluidity.



The residences at Meru & Meadow are designed with a few defining features that ensure that every part of your home feels effortlessly refined.

A symphony of space and elegance.

Large living balconies up to 125 sq. ft.

This private outdoor retreat offers the perfect vantage point— whether to soak in the morning sun or lose yourself in the stars.

~75% floor plan efficiency

Thoughtfully planned homes that comfortably accommodate every aspect of your life.



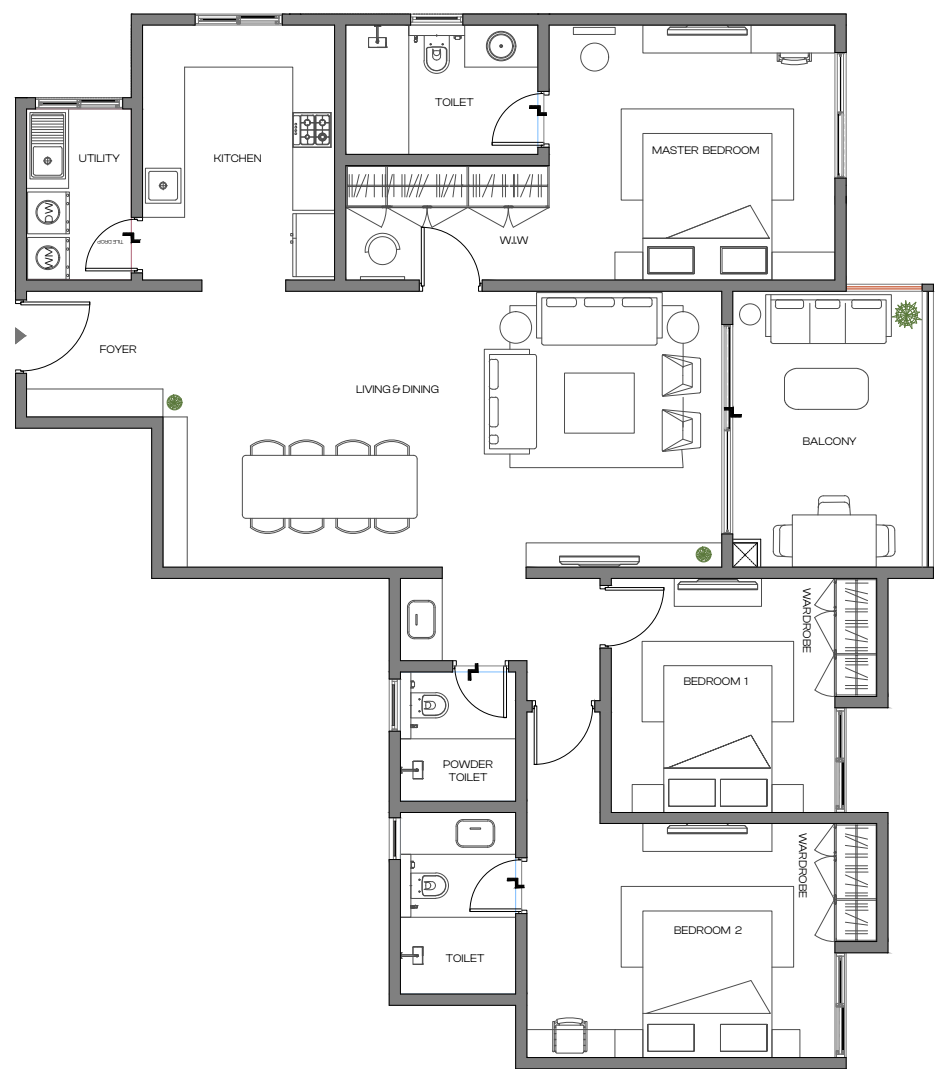
At Meru & Meadow, every detail is orchestrated for a life of balance, beauty and iconic living.

3 BHK
TYPE - 1

1897 SQ. FT.
SBUA

1421 SQ. FT.
TCA (RERA + Balcony)

Foyer 6'-5"X5'-11"	Living & Dining 26'-3"X13'-0"	Balcony 8'-11"X13'-0"	
Kitchen 9'-0"X12'-0"	Utility 4'-11"X8'-0"	Powder Toilet 5'-5"X6'-1"	
	Master Bedroom	Bedroom 1	Bedroom 2
Size	13'-5"X12'-0"	10'-6"X11'-0"	14'-6"X11'-0"
Wardrobe	9'-7"X5'-5"	2'0"X5'7"	2'0"X5'7"
Toilet	9'-0"X6'-1"		5'-5"X8'-6"
Balcony			



KEY HIGHLIGHTS

- Seamless
Indoor-outdoor Living
- Ample
Storage
- A Large Master
Suite



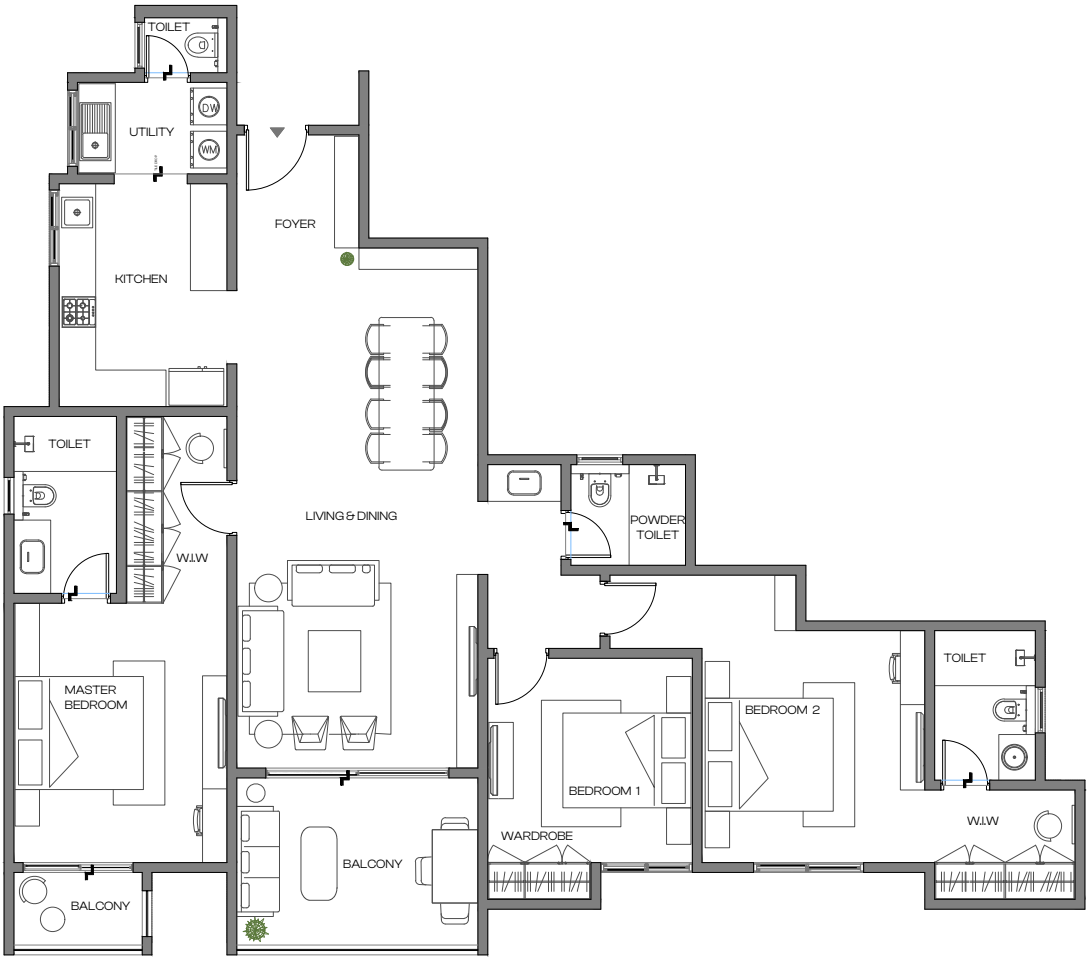
3 BHK
TYPE - 2

2061 SQ. FT.
SBUA

1543 SQ. FT.
TCA (RERA + Balcony)

Foyer 6'-7"X6'-1"	Living & Dining 13'-0"X27'-11"	Balcony 13'-0"X9'-0"
Kitchen 9'-0"X12'-0"	Utility 8'-0"X4'-11"	Powder Toilet 6'-2"X5'-5"

	Master Bedroom	Bedroom 1	Bedroom 2
Size	11'-5"X13'-11"	11'-0"X11'-0"	12'-0"X12'-6"
Wardrobe	5'-5"X10'-0"	5'7"X2'0"	7'-7"X5'-10"
Toilet	5'-6"X9'-6"		5'-5"X8'-0"
Balcony	6'-11"X3'-11"		



KEY HIGHLIGHTS

- Seamless
Indoor-outdoor Living
- Ample
Storage
- A Large Master
Suite



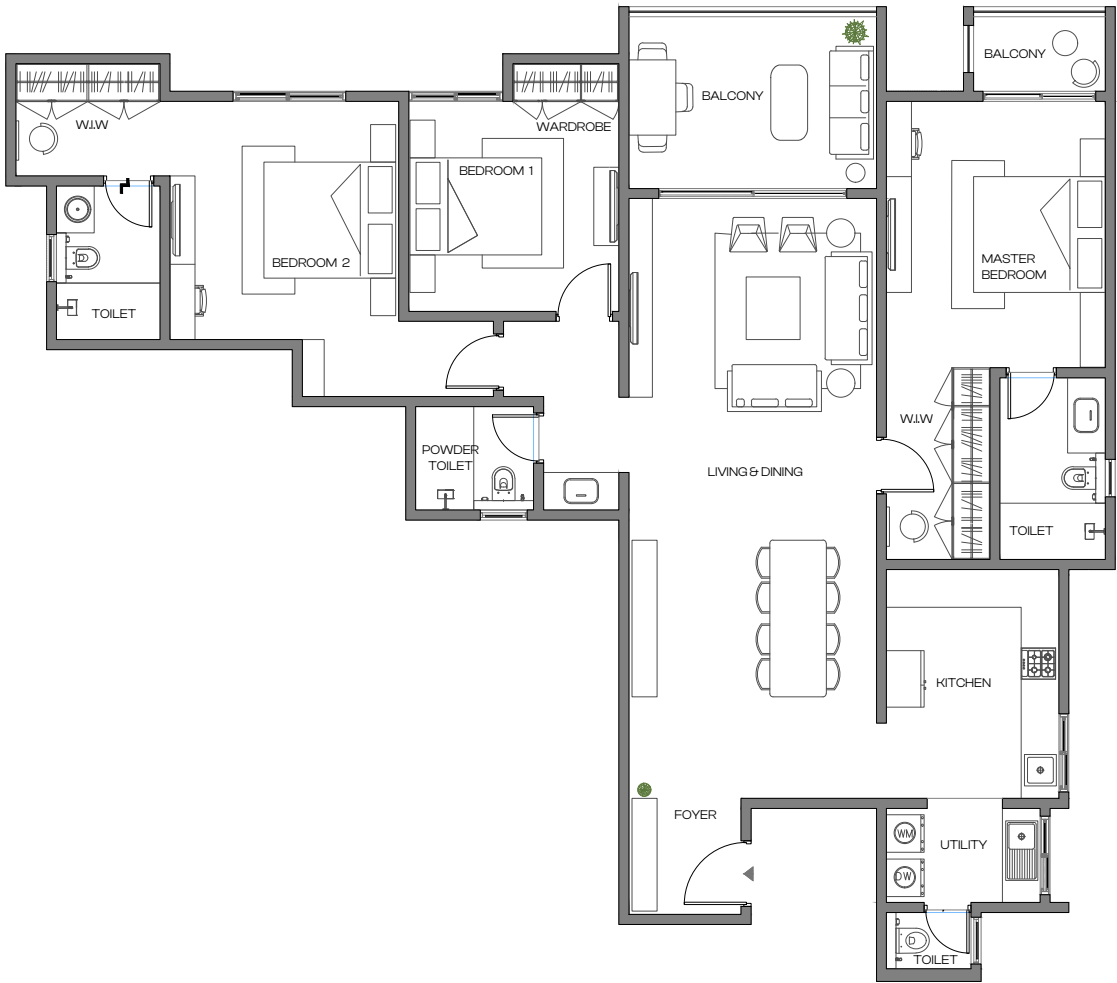
3 BHK
TYPE - 3

2111 SQ. FT.
SBUA

1582 SQ. FT.
TCA (RERA + Balcony)

Foyer 5'-10"X6'-1"	Living & Dining 13'-0"X31'-5"	Balcony 13'-0"X9'-0"
Kitchen 9'-0"X12'-0"	Utility 8'-0"X4'-11"	Powder Toilet 6'-2"X5'-5"

	Master Bedroom	Bedroom 1	Bedroom 2
Size	11'-5"X13'-11"	11'-0"X11'-0"	12'-0"X12'-6"
Wardrobe	5'-5"X10'-0"	5'7"X2'0"	7'-7"X5'-10"
Toilet	5'-6"X9'-6"		5'-5"X8'-0"
Balcony	6'-11"X3'-11"		



KEY HIGHLIGHTS

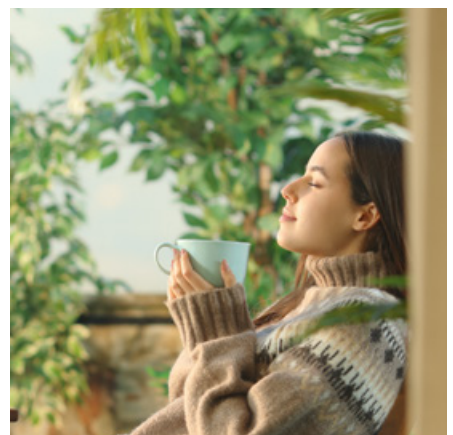
- Seamless
Indoor-outdoor Living
- Ample
Storage
- A Large Master
Suite



Interiors that elevate every moment.

Every home is designed to embody enduring quality and understated luxury. The moment you step inside, you are greeted with premium finishes and carefully selected materials, put together with meticulous attention to detail.

Whether it's the texture of the floor underfoot or the feel of a door handle, each element reflects a commitment to craftsmanship and sets a new standard for elevated living.



Built to endure,
designed to inspire.



LIVING SPACES



BATHROOM

The podium level is a thoughtfully designed space that anchors the two residential towers, a massive ~31,000 sq. ft. clubhouse and state-of-the-art amenities.

One with the outdoors.

A strikingly designed park lies at its core. From above, it forms a lush green canopy, and from within, it offers shaded pathways and a refreshing outdoor experience. It stands as the centrepiece of Meru & Meadow, bringing nature and architecture together seamlessly.





The clubhouse at Meru & Meadow is designed to be more than just a recreational space – it is an extension of your home.

An exclusive unwinding.

From wellness zones to social lounges, every space within the clubhouse is designed to inspire, energise, and elevate your everyday experiences. Here, leisure isn't just an option – it's a way of life.

Amenities for every indulgence.

With over 30 perfectly curated amenities, leisure here is not just a break, it's an experience. Whether it's unleashing creativity in the studio, perfecting your game on the pickleball court, or simply unwinding with your furry friends in the pet park,

every space is designed to enable you to enjoy life on your terms.

Make waves in the temperature-controlled pool, find inspiration at the outdoor co-working space or discover a new passion - all within an environment that's crafted to inspire connection, with yourself and with others. Here, the choices are endless, and they're yours to make.



Relax

Provision for Café*

Creative Studio*

Cards Room*

Crèche

Spa and Salon*

Senior Citizens Park

Seating Deck

Recharge

Tennis Court

Padel Court

Pickleball Court

Temperature-controlled Pool

Multipurpose Court

Badminton Court*

Gym*

Aerobics*

Box Cricket

Table Tennis*

Billiards Table*

Pool Table*

Outdoor Gym

Jogging Track

Reconnect

Water Feature

Kids' Play Area

Games Area*

Seating with Pergolas

Space for Festivities

Pets' Park

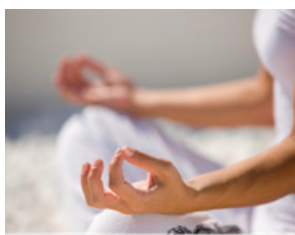
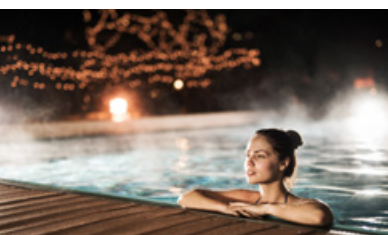
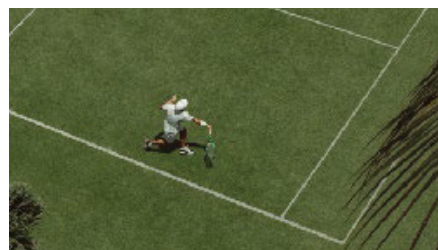
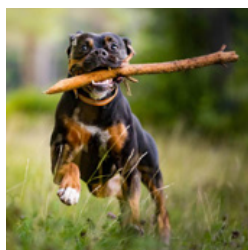
Amphitheatre

Outdoor Workspace

Party Hall with Pantry*

Tree Court with Seating

Co-working Space*





A lush landscape welcomes you the moment you step inside the gates. Here, sophistication and luxury thrive in the lap of nature.

The bespoke outdoors.

The towering homes are set amidst a verdant spread of green. Designed to merge into one another, the architecture flows into nature just as seamlessly as the green finds its way into the enclosed spaces - creating an oasis of luxury just for you.

At Meru & Meadow, sustainability isn't just a commitment - it's an integral part of the design. Every element is thoughtfully crafted to minimise impact and maximise harmony with nature.

Our promise to the planet.

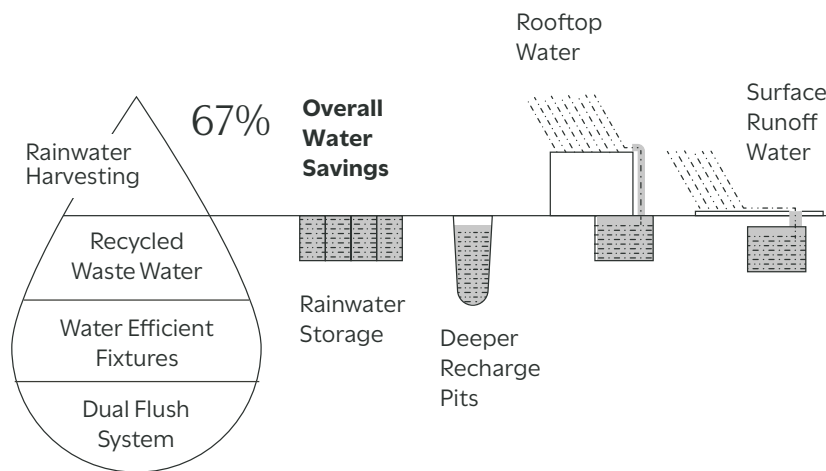
With expansive green cover and architecture that optimises natural light, the project not only enhances everyday living but also helps reduce the overall temperature of the surroundings. Every system is designed to tread lightly on the land, ensuring this oasis remains a source of joy for generations to come.

Because true luxury isn't just about how we live today - it's about the legacy we leave behind.



CARBON HEALING HOME

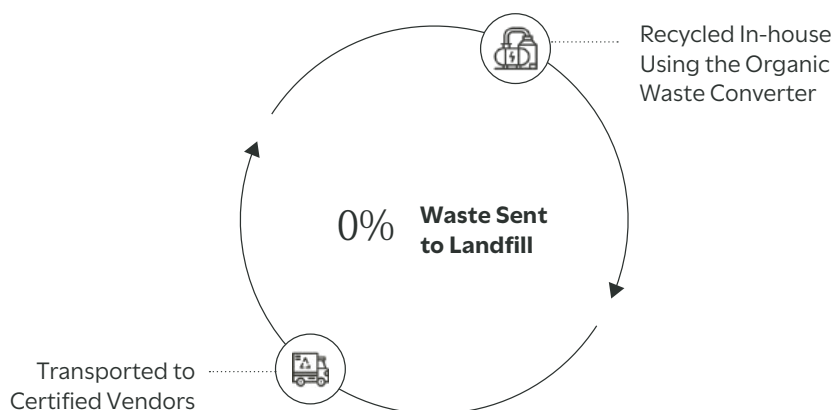
Every carbon healing home is designed to give back to the earth through four very special features.



Sponge Effect

Designed to utilise every drop of rainwater.

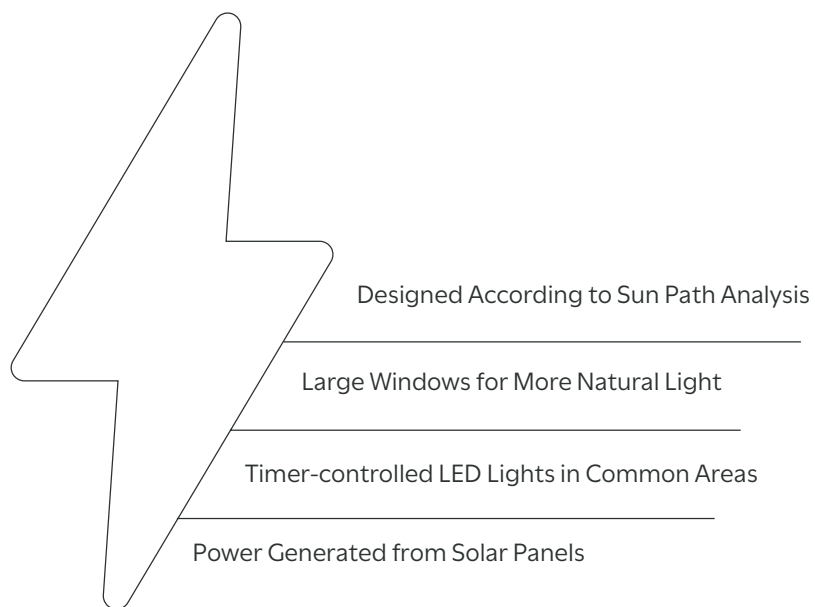
Smart water systems reduce your utility bills while keeping your home future-ready. It's comfort, savings, and sustainability—built in.



Zero Out

Zero waste to landfill.

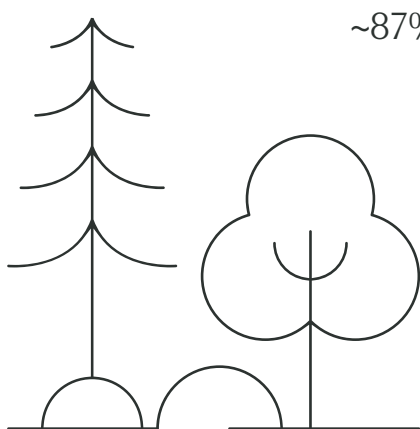
900 kg of organic waste is converted to manure in the organic waste converter.



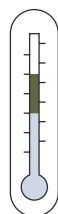
Smart Power

Total utilisation of renewable energy sources.

Here, power is generated from solar panels. In addition, the project is designed according to sun path analysis to maximise natural light for less dependency on the artificial.



~87% Open Space + Green Cover



City Temperature

Meru & Meadow Temperature



Climate Capsule

Higher green cover for lower temperatures.

With acres of greenery, Meru & Meadow will have a considerably lower temperature than the city beyond its walls.

Details of excellence.

STRUCTURE



Seismic resistant RCC structure using system formwork with concrete walls in main building and RCC framed structure up to ground floor, clubhouse and other amenities with block work and plastering.

ARCHITECTURE

DOORS



- **Main Door:** Engineered wooden doors with engineered veneer finish.
- **Bedrooms & Toilet Doors:** Engineered wooden doors with laminate finish.

WINDOWS, SLIDING DOORS & VENTILATORS



- **Windows:** 3-track UPVC (wooden finish laminated profile) windows and sliding door with mosquito mesh.
- **Bathrooms:** Powder-coated aluminium ventilators with architrave profile – fixed/ openable with provision for exhaust fan.



FLOORING & WALL CLADDING

- **Foyer, Living & Dining:** Imported marble.
- **Kitchen, Utility & Servant Toilet:** Vitrified tiles.
- **All Bedrooms:** Laminated wooden flooring.
- **Balcony & Bathroom:** Vitrified or ceramic tiles.



BALCONY RAILINGS

Balcony: Large balcony with RCC parapet and MS top rail enamel painted. Master bedroom balcony with glass railings.



INTERNAL WALL FINISH

Internal Walls & Ceiling: Acrylic emulsion.



EXTERNAL WALL FINISH

External Walls: Combination of cladding and texture finish with exterior grade emulsion.



FALSE CEILING

Living, Master Bedroom Balcony & Toilets: Wooden finish PVC panels false ceiling.

PLUMBING, ELECTRICAL & SERVICES



CP, SANITARY FITTINGS & FIXTURES

Jaquar & Kohler or equivalent water efficient CP and sanitary fixtures.



GRID POWER & BACK UP POWER

- **EB Power:** EWS/1 BHK - 2KW, 3BHK - 5KW, 4BHK - 6KW.
- **DG Power backup:** 50% of EB load for inside the apartments and 100% backup for common area lighting, lifts, and utilities.



SERVICES

- Water Treatment Plant.
- Sewage Treatment Plant.



ELEVATORS

Three lifts for passengers and one service lift per core of reputed make.



SAFETY AND SECURITY

Common area CCTV surveillance in specific areas.



WATER CONSERVATION

- Dual piping system.
- Dual flush system for sanitary.
- Recycled water used for landscape maintenance.
- Water efficient fixtures.
- Rainwater harvesting.
- Ground water recharge.



ENERGY CONSERVATION

- Provision for solar heated water in one toilet of top 2 floor apartments.
- Energy efficient lights in common areas.
- Energy efficient streetlights / timer adjusted streetlights.
- EV charging stations provided in designated areas.



SOLID WASTE MANAGEMENT

- Segregation at source.
- Organic waste converter.



Assetz is a human-centric company that consistently sets new benchmarks in the built environment, ensuring a better quality of life for generations to come. Our iterative design philosophy creates ecosystems that are deeply attuned to today's needs while anticipating tomorrow's possibilities. For us, sustainability isn't an afterthought - it's fundamental to our vision.

50+ Projects

Residential & Commercial

50+ Mn Sq. Ft.

Developed & Ongoing

24,000+ Units

Delivered & Underway

700+ Acres

Acquired and/or Licensed



Shot At Location

meru & meadow

Doddakallasandra, Uttarahalli Hobli,
Bengaluru – 560062.



Assetz Property Group,
No.30, Crescent Road,
Bengaluru, Karnataka – 560001

T: +91 78295 54411,
enquiries@assetzproperty.com,
www.assetzproperty.com/meru&meadow

In association with



8th Mile, Gokulam Complex, Kanakapura
Main Road, Vasanthapura Village,
Bengaluru – 560062

PRM/KA/RERA/1251/310/PR/130625/007828

The Company does not guarantee or represent the information contained in this document, which is to be used for general information only. The Company does not guarantee or represent that the information contained within this document is correct. Any interested party should verify all the information including designs, plans, specifications, facilities, features, payment schedules, terms of sales, etc. independently with the Company prior to concluding any decision for buying in any of the projects. The user of the brochure confirms that he/she has not relied on this information alone when making any booking/purchase in any project of the Company. The information, visuals, renders and creative depictions contained herein are artistic impressions, indicative in nature and are for general information purposes only. The actual design/colour/finish/construction/landscape could undergo changes based on changes in design, layouts, materials, site conditions, etc. Any furniture, paintings, or any items of personalised nature not specifically mentioned in the contract and shown in the images are only for the purpose of illustration and do not form part of the offering. Further, the renders/ visuals of the area beyond the project site are artistic in nature and may not depict the actual visuals. While every reasonable care has been taken in providing the information, under no circumstances the Company or its employees, managers or representatives shall be held liable for any loss or damage, special or consequential or otherwise, arising from the use of or reliance on information provided in the brochure without verifying the same independently with the Company. The contents provided herein are with all faults and on an “as is” and “as available” basis. No information given in this brochure creates a warranty or expands the scope of any warranty that cannot be disclaimed under the applicable laws.